



Pennsylvania Maternal Health Collaborative

Sarah Inés Ramírez, MD, FAAFP

Associate Professor and Vice Chair of DEIB | Penn State College of Medicine

Family and Community Medicine | Family Medicine Obstetrics

Penn State Hispanic Professionals Association, *Founder and President*

Family Medicine Education Consortium Board, *Member*

PA Maternal Health Collaborative, Co-Founder and Member

PA Chapter of the National Hispanic Medical Association, *Founder and President*

Latino Connection Foundation, *Executive Board President and Co-Lead of Public Health Projects*

06/13/2015

PA Maternal Health Collaborative

Leadership Team

REPRESENTATIVE (S)	ORGANIZATION
Scott Allen	FMEC
Sarah Inés Ramírez	NHMA PA, Family & Community Medicine at PSCOM, LCF, FMEC
David Saunders, Tensae Gertz, Alexis Kullish, Gabrielle El-Adas	PA DOH Office of Health Equity
Sean McCormick	Latino Connection, Color & Culture, Latino Connection Foundation
Ashley Walkowiak	Governor's Commission on Women
Ashleigh Strange	Governor's Commission on LGBTQ+ Affairs
Makayla Lagerman	Residency Program Liaison, Family & Community Medicine Residency Program at PSCOM
Sara Goulet	PA Department of Human Service
Giselle Hallden	PA Department of Health and Bureau of Family Health

Members

- 140 people have signed up

UPMC, Penn State, PA DOH, Philadelphia DOH, Once Upon a Preemie, Implicit Network, UPenn, AHA, Health Partners Plan, Jefferson Health Plan, PreciousLY Polished Art Designs Ncoollections, Child Guidance Resource Centers, Temple/Villanova University, Patients R Waiting, St. Lukes, Bowling Business Strategies, Latino Connection, Jewish Healthcare Foundation, Delaware, Geisenger, The Primary Health Network, Delaware County Health Department, Temple University Program for Maternal Health Equity, The Foundation for Delaware County, MVP Recovery, Child Guidance Resource Centers, ChesPenn Health Services, City of York - Bureau of Health, Fox Chase Cancer Center, and more

Who we are...

PA Maternal Health Collaborative

A CATALYST FOR ENGAGEMENT | NEXUS
FOR COLLECTIVE IMPACT



Our Shared Mission

Engage diverse stakeholders across Pennsylvania—including those not yet connected—through virtual and collaborative participa-

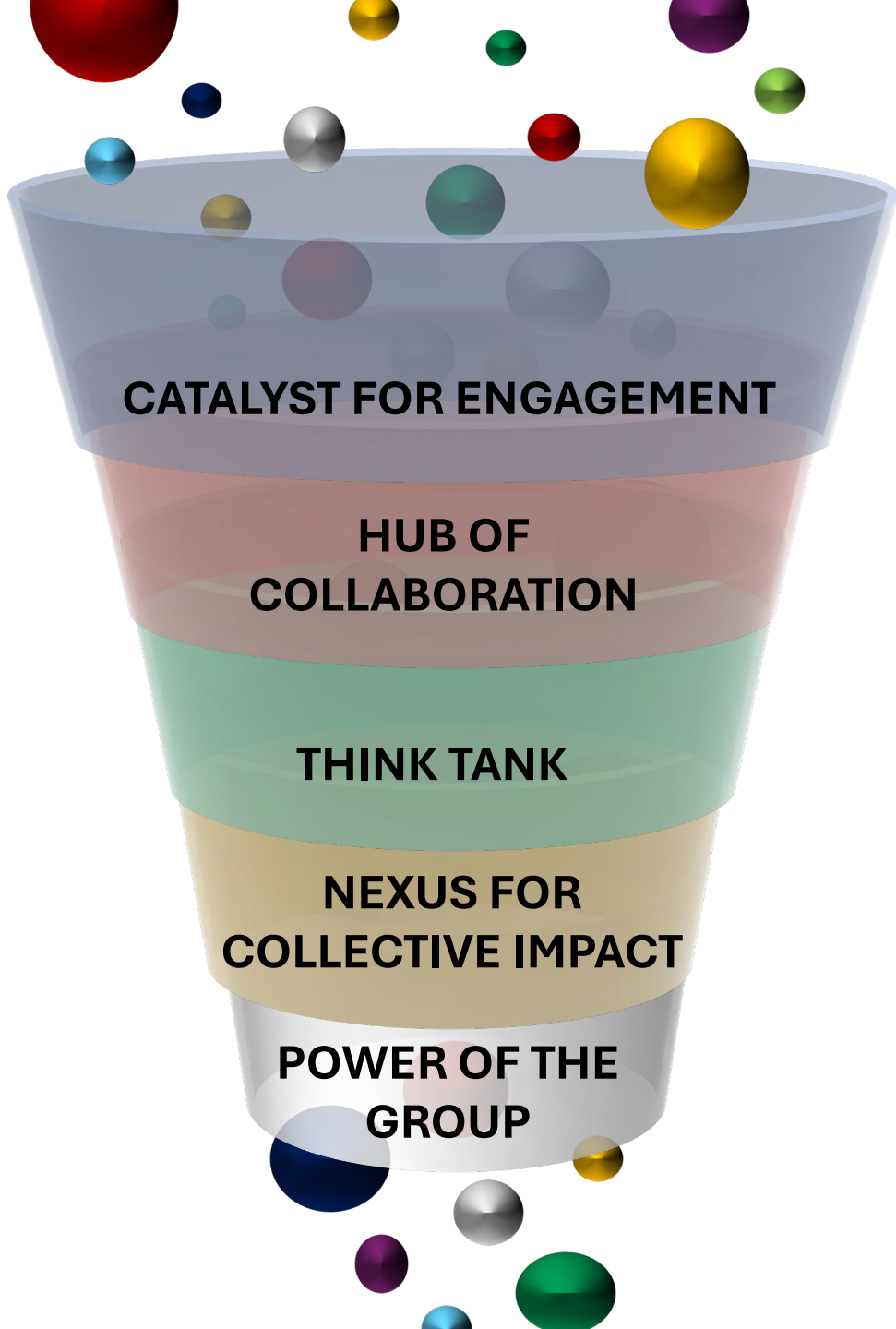
Share current activities addressing maternal morbidity, disparities, and social determinants, with a focus on success, spread, and sustain-

Strategize to identify and mitigate ongoing racist practices within maternity care.

Identify successful, data-driven models to advance scalable, sustainable solutions



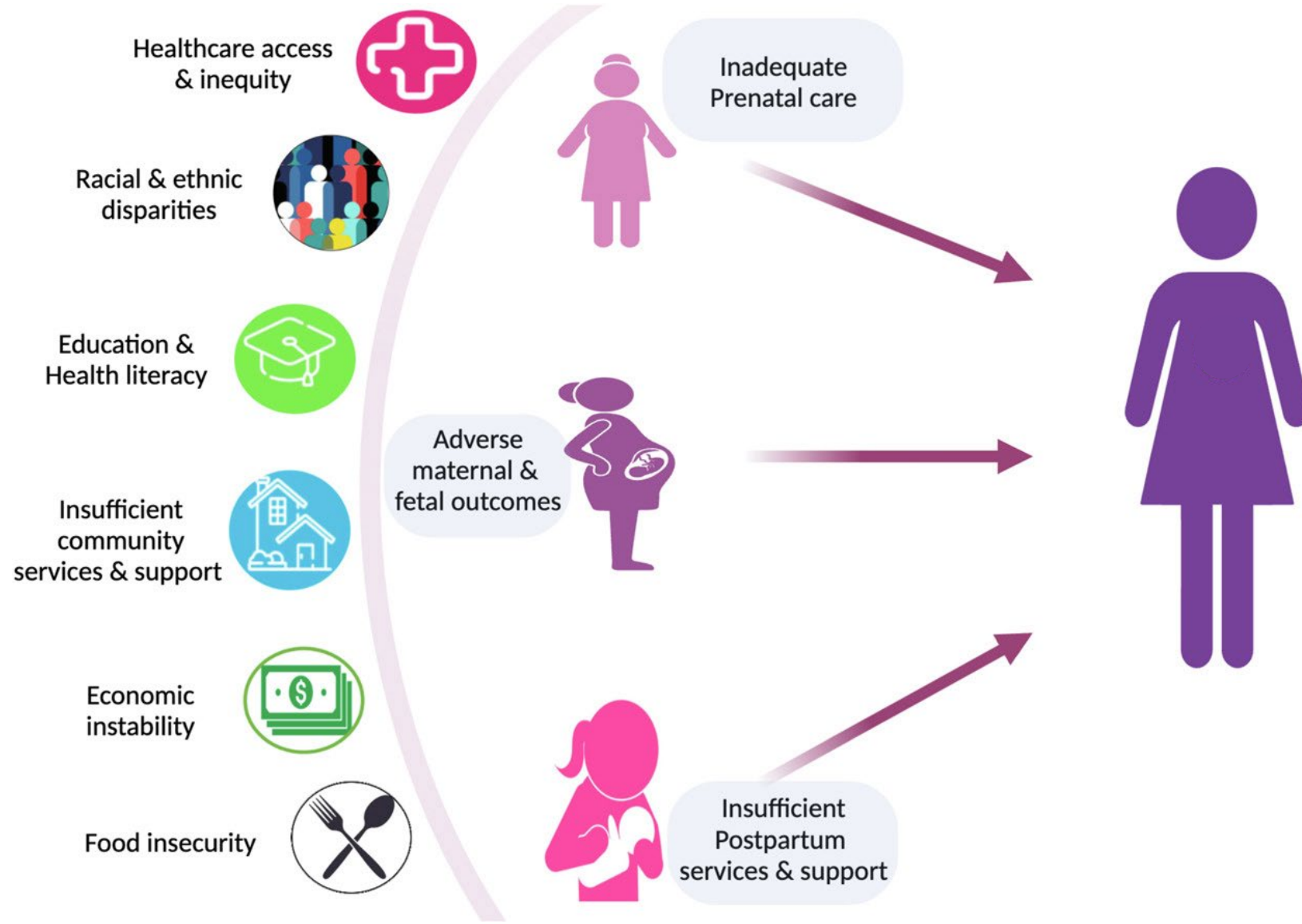
Next Steps: Role for the PA Maternal Health Collaborative



- Multiple statewide groups have developed or are in the process of developing frameworks and recommendations.
- Many discrete projects are working to address maternal morbidity, health disparities, and SDOHs, both statewide and regionally.

How can our Maternal Health Collaborative help advance these efforts?

Social Determinants of Health and Racism in Medicine Are Drivers of Maternal Morbidity and Mortality



Drivers of Maternal Mortality in PA

Pregnancy-Associated - "a death that is attributable to a condition that is *unaffected* by the pregnancy and occurs within 1 year of the pregnancy."¹

- Mental Health and Substance Use Disorder

Pregnancy-Related - "...the death of a birthing individual while pregnant or within 1 year of the end of a pregnancy regardless of the outcome, duration, or site of the pregnancy from any cause related to or aggravated by the pregnancy or its management, but not from accidental or incidental causes."¹

- Mental Health and Substance Use Disorder
- Cardiovascular Disease

1. Campbell J, Matoff-Stepp S, Velez ML, Cox HH, Laughon K. Pregnancy-Associated Deaths from Homicide, Suicide, and Drug Overdose: Review of Research and the Intersection with Intimate Partner Violence. *J Womens Health (Larchmt)*. 2021;30(2):236-244. doi:10.1089/jwh.2020.8875

The **intent** of the Collaborative is not to educate advocates and stakeholders about the state of the problem but rather to **present solutions**.

The overall goals of the Collaborative are to:

- Engage a diverse group of stakeholders (see lists below) particularly those who may remain unconnected to PDOH work in this area but who will find virtual participation and sharing of *solutions*.
- Share information on current activities to address maternal morbidity, health disparities, and SDOHs, including their success and potential for spread and sustainability;
- Develop a strategy for identifying ongoing racist practices within maternity care and ways to mitigate these practices.
- Identify promising and successful models, particularly those which have strong data or the potential to show impact, for spread and sustainability;
- Unite individuals and institutions in advancing such successful efforts, through collaboration or replication, and through new funding; and
- Disseminate findings through scholarship

Alignment of goals for Maternal Health Across PA

SHIP Goal Team 3.4

- Vaccinate newborn at age-appropriate times.
- Improve early and adequate prenatal care visits.
- Increase behavioral health services during prenatal, perinatal, and postnatal care.
- Annually provide breastfeeding education and community and outreach to improve breastfeeding initiation and duration times
- Increase access to prenatal and postnatal care.

Maternal Health Collaborative Group

- Engage a diverse group of stakeholders (see lists below) particularly those who may remain unconnected to PDOH work in this area but who will find virtual participation and sharing of *solutions*.
- Share information on current activities to address maternal morbidity, health disparities, and SDOHs, including their success and potential for spread and sustainability.
- Develop a strategy for identifying ongoing racist practices within maternity care and ways to mitigate these practices.
- Identify promising and successful models, particularly those which have strong data or the potential to show impact, for spread and sustainability.

PA Maternal Health Strategic Planning Team

- Improve detection and treatment of behavioral health and substance use.
- Improve coordination and access to care in rural areas and maternity care deserts.
- Increase access to quality of care.
- Integrate initiatives to address health related social needs.
- Expand and diversify the maternal health workforce

ASSET MAP: Postpartum Mental Health

