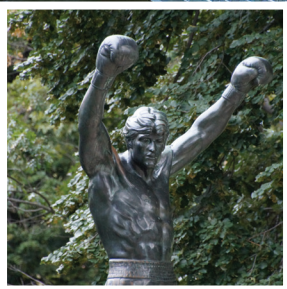


We've got **HEART**! We've got **GRIT**!
We are **FAMILY MEDICINE**!



2024 FMEC Annual Meeting Program

September 19 - 21

Philadelphia Marriott • Philadelphia, PA

A WORLD-CLASS TEAM OF EXPERTS

PRIMARY CARE AT UPMC

UPMC Primary Care physicians play a critical role in UPMC's commitment to excellence. They provide high-quality medical care for patients, who range in age from newborn to geriatric, in practices located in rural, suburban, and urban settings. New graduates are welcome, and peer-to-peer mentoring is available.

Join our growing network of hundreds of primary care physicians who specialize in family medicine, internal medicine, geriatrics, sports medicine, and pediatrics with opportunities in practice-based outpatient, inpatient, and nursing home environments. Providers appreciate professional growth and practice leadership opportunities.

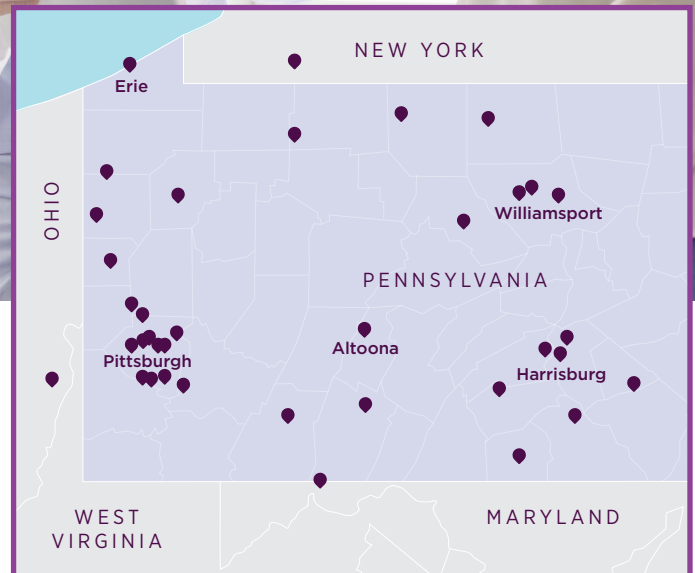
BE A PART OF IT.

Multiple professional
**growth and research
opportunities**

More than
40 HOSPITALS
in western New York,
Pennsylvania, and
western Maryland

Ranked among the
**BEST HOSPITALS
IN THE NATION**

UPMC Presbyterian Shadyside is
nationally ranked in several specialties
by *U.S. News & World Report*.



Why choose UPMC?

- » Join a leading nonprofit health system with an employed model
- » Benefit from public service loan forgiveness eligibility
- » Enjoy the security of paid occurrence-based malpractice insurance
- » Flexibility and peace of mind with paid parental leave
- » Supportive environment that prioritizes work-life balance

If you want to talk to a member
of our team, please email
physicianrecruitment@upmc.edu.

UPMC LIFE
CHANGING
MEDICINE



Table of Contents

Wireless Internet Access

The FMEC has arranged for all meeting attendees to have wireless internet access in meeting rooms and public spaces. Use the information below to connect.

WiFi Name: FMEC2024

Access code: Family24

SOCIAL MEDIA:

Use **#FMEC2024** to tag your posts and tag us on the following platforms:

X : @FMEC_

Facebook: fmecinc

Instagram: fmec_inc

President Message and FMEC Board of Trustees	4
Host Committee Organizations.....	5
Annual Meeting Information	6
Descriptions of Presentation Formats	7
Host Committee Message.....	8
Plenary Speakers	9
Award Winners	10 – 11
Preconferences and Special Events.....	12
Schedule at a Glance.....	13 – 14
About the FMEC	15
Sponsors.....	16
Exhibitors.....	17
Legacy Donors.....	18
Programming:	
Wednesday/Thursday	20 – 21
Friday	22 – 34
Saturday	35 – 45
FMEC Partners.....	46 – 47
Residency Fair Participants.....	48 – 50
Breakfast Table Discussions.....	52 – 53
Clinical Camp Tables	54
Poster Session 1	55 – 58
Poster Session 2	59 – 62
Hotel Maps.....	Back Cover



Penn Medicine

Thank you to Penn Medicine for sponsoring the 2024 FMEC Mobile App.

MOBILE APP

To download the mobile app, search the App Store or Google Play for "FMEC."

Login: the email address you used for registration

Password: fmec2024



From the FMEC President

Welcome, everyone, to the annual Family Medicine Education Consortium meeting here in the historic and vibrant city of Philadelphia!

This year's theme, "We've got HEART! We've got GRIT! We are FAMILY MEDICINE!" perfectly encapsulates the spirit of our community. Family Medicine is more than a specialty; it's a calling that demands compassion, resilience, and an unwavering commitment to our patients and communities. We are the backbone of healthcare, and together, we are driving the future of medicine forward.

Over the next few days, you'll have the opportunity to engage with some of the most inspiring minds in our field. Our plenary speakers are poised to challenge our thinking and ignite our passion. The preconference activities promise to be both stimulating and practical, setting the stage for deep learning and meaningful connections. Our residency fair will be a dynamic space where the next generation of family physicians will explore the paths that lie ahead. In our workshops, seminars, and presentations, we will dive into the latest innovations, share best practices, and tackle the challenges that shape our daily practice. And let's not forget our incredible host city, Philadelphia—a place rich with history, culture, and a spirit of revolution that resonates with our own mission to transform healthcare. I encourage you to explore all that the city has to offer, from its iconic landmarks to its diverse neighborhoods.

Thank you for being here, for your dedication to Family Medicine, and for the HEART, GRIT, and passion you bring to our collective mission. Together, we are Family Medicine, and together, we are making a difference. Let's make this an unforgettable meeting!

Leon McCrea II, MD, MPH, FAAFP

Drexel University College of Medicine

2024 FMEC Board of Trustees

EXECUTIVE COMMITTEE

President

Leon McCrea II, MD, MPH, FAAFP

Drexel University College of Medicine
Tower Health Family Medicine Residency
Philadelphia, PA

President – Elect

Pam Vnenchak, MD

Lancaster General Health/ Penn Medicine
Lancaster, PA

Treasurer – Secretary

Heather L. Paladine, MD, MEd, FAAFP

NY Presbyterian-Columbia
Family Medicine Residency Program
New York, NY

Immediate Past President

Donald "Raj" Woolever, MD, FAAFP

Portsmouth Regional Hospital/
Tufts University School of Medicine
Family Medicine Residency
Portsmouth, NH

BOARD MEMBERS

Maya Bass, MD, MA, FAAFP

Cooper/CMSRU
Family Medicine Residency
Camden, NJ

Donald Beckstead, MD, FAAFP

UPMC Altoona
Family Medicine Residency
Altoona, PA

Tracey Conti, MD

UPMC and the University of Pittsburgh
School of Medicine
Pittsburgh, PA

Uchenna Emeche, MD

Population Health Physician, MedStar
Health, Baltimore, MD

Britt Gayle, MD, MPH, AAHIVS

Health Resources and Services
Administration and MedStar
Franklin Square
Laurel, MD

Aaron George, DO

Meritus Health
Hagerstown, MD

Dennis L. Gingrich, MD

Pennsylvania State University
College of Medicine
Hershey, PA

Sarah Inés Ramírez, MD, FAAFP

Family and Community Medicine
Penn State College of Medicine
Hershey, PA

Robert J. Motley, MD, MHCDS

Thomas Jefferson University &
Sidney Kimmel Medical College
Philadelphia, PA

Martha Seagrave PA-C, RN

UVM Larner College of Medicine
Burlington, VT

Molly Talley

Pennsylvania Academy
of Family Physicians
Harrisburg, PA

Taylor Rider, DO, MS

Resident Member
UPMC Williamsport Family Medicine
Residency
Williamsport, PA

Hannah Clarke, MPH

Medical Student Member
Sidney Kimmel Medical College,
Philadelphia, PA



2024 Annual Meeting Host Committee

Bayhealth Family Medicine Residency

Raghda Bchech, MD, AAHIVS, Core Faculty

Beebe Healthcare Family Medicine Residency

Tanya Ray, MS, Administrative Director,
Graduate Medical Education

Joyce Robert, MD, Founding Program Director

ChristianaCare

Evan Bilheimer, MD, MPH, Associate Program Director

Cooper University and Cooper Medical School of Rowan University

Maya Bass, MD, MA, FAAFP, Program Director, Cooper
CMSRU Family Medicine Residency; Assistant Professor,
Department of Family Medicine

Crozer Health Family Medicine Residency Program

Sarah Morchen, MD, DipABLM, Associate Program Director
William Warning, MD, Program Director

Delaware Valley Community Health

Karen Lazarus DO, MPH, AAHIVS, Medical Director

Drexel University College of Medicine

Leon McCrea II, MD, MPH, Deborah J. Tuttle, MD, and
John P. Piper, MD, Vice Dean for Educational Affairs

FACTS about Fertility

Marguerite Duane, MD, MHA, MSPH, FAAFP,
Executive Director

Inspira/Inspira Mullica Hill

Meagan Vermeulen, MD, FAAFP, Founding Program
Director, Inspira Family Medicine Residency Program,
Mullica Hill; Associate Professor, Department of Family
Medicine,
Rowan-Virtua SOM
Nicole Zucconi DO, Program Director

Lehigh Valley Health Network

Katerina C. Valavanis, MD, Faculty

Jefferson Health Northeast

Rob Danoff DO, MS, FACP, FACP, FACP, Program Director,
Family Medicine and Family Medicine/Emergency Medicine
Residency Programs

Pennsylvania Academy of Family Physicians

Molly Talley, Chief Resident & Student Engagement Officer

Perelman School of Medicine at the University of Pennsylvania

Zachary Kosak, MD, Assistant Professor of Clinical Family
Medicine and Community Health

Saint Francis Family Medicine Residency Program

Hugh Bonner, MD, Program Director
Melissa Tribuiani, MD, Associate Program Director

St. Luke's Family Medicine Residency – Anderson

Andrew Goodbred, MD, Program Director

Suburban Community Hospital

Jessica Mayer DO, Program Director, Suburban Family
Medicine Residency; Department Chair

Temple University Hospital and Drexel University College of Medicine

Janet Cruz, MD, Program Director, Temple Northwest
Community Family Medicine Residency
Menachem Leasy, MD, Program Director,
Temple Family Medicine Residency Program

Thomas Jefferson University and Sidney Kimmel Medical College

Marc Altshuler, MD, Residency Director, Thomas Jefferson
University Dept of Family and Community Medicine
Bob Motley, MD, MHCDS, Vice Chair, Community Medicine

UPMC Williamsport Family Medicine Residency

Adwoa Boahene, MD, MPH, DipABLM. Assistant Director

We've got HEART!
We've got GRIT!
We are FAMILY MEDICINE!

2024 Annual Meeting Information

Meeting Location

All meeting events are held at the Philadelphia Marriott, 1200 Filbert Street, Philadelphia, PA, 19107

Meeting Attendees

The FMEC expects nearly 1,000 attendees at the 2024 Annual Meeting, including 300 medical students, 250 residents, over 400 faculty and other post-training health professionals, 50 exhibit staff, and others. The unique nature of the meeting means that while many program directors and faculty have attended for many years, as much as 60% of the attendees are students or residents who may be new to the FMEC. Please help welcome those who are “first timers” to the FMEC and to family medicine!

Annual Meeting Policies

All participants at the FMEC 2024 Annual Meeting are expected to observe the rules and behaviors described in FMEC’s Annual Meeting policies, available at www.fmec.net/policies.

Smoking

No smoking is allowed at the Philadelphia Marriott in FMEC events.

Program and Schedule Updates

For information on presentation and speaker changes, cancellations, and corrections that may have occurred after the program was printed, please download and use the conference mobile app (*See page 3 for more info*).

Conference Mobile App

The FMEC strongly encourages all attendees to download and use the mobile app, for the most updated meeting information, to connect with other attendees, and more. (*See page 3 for more info*).

Photo/Video Release

The FMEC will take photos and videos throughout the Annual Meeting. These photos are for FMEC use only and may appear on the FMEC website, newsletter, brochures, social media, or other future FMEC promotional material. This also includes any photos uploaded using the FMEC mobile app. By virtue of your attendance, you agree to usage of your likeness in such media.

Social Media

We invite you to share our Annual Meeting with others and tell them what you like about the FMEC! (*see page 3 for more info*).

Lost and Found

Articles may be turned in and reclaimed at FMEC registration desk, which is located on the third floor of the hotel.

Evaluations

Your feedback is critical to the FMEC’s ability to continually improve and plan programming that meets your needs. Please complete a session evaluation for each session you attend in the conference mobile app.

CME Credit

The AAFP has reviewed 2024 FMEC Annual Meeting and deemed it acceptable for up to 24.75 Live AAFP Prescribed credits. Term of Approval is from 9/19/2024 to 9/21/2024. Physicians should claim only the credit commensurate with the extent of their participation in the activity.

To see the full credit determination statement including which sessions are not approved for credit, use the QR code or visit fmec.net/2024-annual-meeting.



New To The Meeting?

Here are some tips!

- **Review the program:** Identify one or two sessions in each time block that especially appeal to you to help plan your schedule.
- **Use the tracks:** Many sessions are labeled with thematic tracks – residents and students should look for *R* and *S* respectively.
- **Use the mobile app:** Build your schedule for each day, and see who’s here to connect with.
- **Network:** This meeting is all about meeting people! Find others who share your interests and spend time in hallway conversations. Don’t be afraid to skip a session to chat with others.
- **Learn from the exhibits:** Meeting with the exhibitors will enrich your learning and enhance your overall experience.
- **Let us help you:** If you aren’t sure what to do or have questions, visit the FMEC staff at registration, or look for staff or members wearing Board or Host Committee ribbons – that means they’re here to help you!

Description of Presentation Formats

Workshops (1 hour)

Workshops are designed to transmit specific skills and are directed toward learning methodologies and strategies for approaching problems in teaching students, residents and faculty. The participants should be actively involved and should be able to acquire an understanding of various approaches to these problems.

Seminars (1 hour)

Seminars are designed to transmit specific knowledge in a given area and consist of a combination of formal presentations and group discussions.

Research and Quality Improvement (30 minutes each – or 2 per 1-hour block)

These presentations report rigorously-designed investigations or quality improvement activities and are followed by a moderated discussion.

Paper Presentations

(15 minutes each – or 4 per 1-hour block)

Paper presentations provide an opportunity to present to a wide audience about research, scholarship, curricular design, teaching programs, community service, and any other topic of interest related to family medicine. Both completed projects and those under development may be presented. They are typically grouped into an hour-long session featuring four presentations.

Lecture Discussions

(20 minutes each – or 3 per 1-hour block)

The Lecture Discussion format involves a 20-minute presentation to share information that relates to a clinical, educational or policy topic, report of a project and/or activity, or introduction of a policy issue, along with time for participant discussion. They are typically grouped into an hour-long session featuring three presentations.

Posters (70 minutes per session)

Scientific posters are presented on various topics of interest in family medicine, with authors available for discussion.

Clinical Success Stories, Power Stories and Speed Presentations (5-7 minutes each)

This format provides the presenter 5-7 minutes and a maximum of 5 slides to share ideas and information in a focused, direct manner, followed by discussion. They are typically grouped with 4–10 in an hour-long session.

Clinical Camp Tables (70 minutes per session)

This format is an opportunity to watch and participate in a hands-on demonstration of a clinical procedure commonly performed in family medicine, using patient models and materials.

Breakfast Table Discussions (60 minutes)

Breakfast Table Discussions are opportunities during the Saturday breakfast for scholarly and networking discussions. The title of the table is the topic, and presenters may provide brief opening remarks but generally facilitate discussion of the topic.

TRACKS

Abbreviation	Name
ACGME	ACGME/Guidelines and Standards
ADSU	Addiction/Substance Use
ADV	Advocacy
ART	Art/Narrative Medicine
CE	Community Engagement/Involvement
DEI	Diversity, Equity and Inclusion
DMCC	Disease Management/Clinical Care
F	Faculty
GER	Geriatric/Palliative Care
GH	Global Health/Immigrants/Refugees
IH	Integrative Medicine/Whole Person Health
IMM	Immunizations
INN	Innovation
MCH	Maternal and Child Health
MH	Mental Health
NT	Nutrition
OSTEO	Osteopathic
POCUS	Point-of-Care Ultrasound
PRO	Procedures
PTSIP	Preparing to Succeed in Practice
R	Resident
REPRO	Reproductive Health
RESQI	Research/Quality Improvement
RM	Rural Medicine
S	Student
SDOH	Social Determinants of Health
TECH	Artificial Intelligence/Technology
WELL	Wellness

From the 2024 Host Committee

We've got HEART! We've got GRIT! We are FAMILY MEDICINE!

Philadelphia is a city with a rich history in medicine. A leader in medical education since the 1700s, Philadelphia had the first medical school, school of anatomy, college of pharmacy, and college for women doctors. Philadelphia saw the first successful brain and heart surgeries, the discovery of many vaccines, and more. About 1 out of every 6 U.S. doctors has received training in Philadelphia, thanks to our many excellent medical institutions.

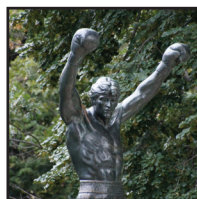
Philadelphia is also a city of iconic images and memorable mottos. It's the city of brotherly love (and sisterly affection) and the cradle of America, where you can see the LOVE sculpture, experience history at Independence Hall, and raise your arms in triumph on the Rocky Steps.

Choosing a theme for the FMEC 2024 Annual Meeting was a challenge for the Host Committee – because there were too many options! How could we convey the excitement we feel about welcoming faculty, residents and students from all around the northeast U.S. to our amazing city – and capture the love, history, innovation, determination, and more that we feel for Philadelphia and its incredible family medicine community? This is what keeps us motivated to provide the best care for patients and communities every day.

We've got HEART. We found our way into family medicine because we saw passion, commitment and opportunity. We bonded with the family medicine community during medical school, and our love for treating patients from birth to end of life grew throughout our training. We form strong attachments to the families we care for, and for the care teams that make up our work families. We care for patients unconditionally and love our communities.

We've got GRIT. Grit is the combination of passion and perseverance. As family physicians, we are not immune to burnout and psychological stress. But our grit helps us endure and contributes to our psychological well-being. And like the Philadelphia Flyers mascot Gritty, sometimes we can seem a little out there, but we know the importance of making things fun.

We are FAMILY MEDICINE. We are the best.



2024 Annual Meeting Plenary Speakers

Join us at the plenary sessions for these exciting speakers as well as presentations of the FMEC 2024 Awards



Friday, September 20, 2024

Welcome Plenary, 12:30 pm – 2:00 pm

Laurence C. Bauer, MSW, MEd, Honorary Plenary

THE VALUE PROPOSITION FOR PHYSICIAN WELLNESS IN FAMILY MEDICINE – MARGOT L. SAVOY, MD, MPH, FAAFP, FABC, CPE, CMQ, FAAPL

Margot Savoy, MD, MPH, FAAFP, FABC, CPE, CMQ, FAAPL (she/her) is Senior Vice President of Education, Inclusiveness and Physician Well-Being for the American Academy of Family Physicians, Associate Professor of Family & Community Medicine and Urban Bioethics & Population Health at the Lewis Katz School of Medicine, and Associate Professor (adj) at the Maurice Kornberg School of Dentistry at Temple University. Dr. Savoy will discuss the on-going strain on the mental and physical well-being of the primary care workforce. She will identify opportunities where strategic investment in family medicine (and primary care) could improve physician wellness, patient care outcomes and overall community health, and she will re-affirm the value of family medicine in meeting health needs at the national and community level.



THE FRIDAY LUNCH PLENARY IS SPONSORED BY FMEC
PLATINUM PARTNER, UPMC LIFE CHANGING MEDICINE.



Friday, September 20, 2024

Evening Plenary, 5:30 pm – 7:00 pm

FIVE LESSONS FROM A PATIENT ON MATTERS OF LIFE AND DEATH – JIM ZERVANOS AND SPECIAL GUEST NIKITAS ZERVANOS, MD

Jim Zervanos is the author of two memoirs, *That Time I Got Cancer: A Love Story and Your Story Starts Here: A Year on the Brink with Generation Z*, and two novels, *LOVE Park* and *American Gyro* (2025). His award-winning essays and short stories have been published in numerous literary journals, magazines, and anthologies. His life as the son of a family doctor, along with his own healthcare experience with diffuse large b-cell lymphoma, has inspired him to tell his story. Mr. Zervanos will share important lessons about the doctor-patient relationship, eliciting the patient's narrative and listening carefully, and the patient's role in the healthcare team.



Saturday, September 21, 2024

Closing Plenary, 3:45 pm – 4:45 pm

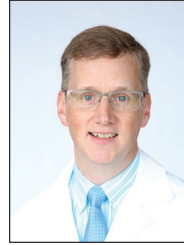
THE ART OF 'UNLEARNING' TO ADVANCE HEALTH EQUITY: THE PURPLE HEALTH STORY - ANITA RAVI, MD, MPH, MSHP, FAAFP

Anita Ravi, MD, MPH, MSHP, FAAFP is CEO and Co-Founder of the PurpLE Health Foundation, a nationally recognized non-profit pioneering the United States' first Center of Healthcare Excellence for Survivors of Gender-Based Violence (GBV) to improve care for women, girls, and gender-diverse people who have experienced human trafficking, domestic violence, and sexual assault. She has also been named a "40 Under 40" Leader in Minority Health by the National Minority Quality Forum and received the FMEC's Emerging Leader Award in 2016. Dr. Ravi's will discuss the PurpLE Health Foundation, share information on comprehensive GBV clinical, research, training, and advocacy programs that have garnered widespread acclaim, and emphasize the urgent need for radical transformation in the healthcare system for GBV survivors.

Award Winners

2024 FMEC Family Physicians Who are Changing Our World Award

The FMEC seeks to identify and recognize family physicians who have developed innovative projects and programs that have had a positive impact on the world. The FMEC recognizes family physicians who have demonstrated significant achievement in promoting the health and well-being of the community at the local, state, national or international levels.



John N. Boll, Jr. DO, FAAFP

UPMC Rural Family Medicine Residency,
Program Director
UPMC Williamsport Family Medicine
Residency, Associate Director

2024 FMEC Mid-Career Faculty Achievement Award

The FMEC seeks to support mid-career faculty with expertise in an area relevant to family medicine. It is our intention to identify and acknowledge one mid-career faculty member each year, who has demonstrated significant achievement. The intent of this recognition is to assist faculty who have not yet received tenure approval or otherwise been highly recognized for their efforts.



Krishna M. Desai MD, FAAFP

Columbia University Medical Center
New York Presbyterian Hospital
Family Medicine Residency

2024 FMEC Emerging Leader Award

The FMEC seeks to identify, encourage and support promising family medicine senior residents, junior faculty and clinicians in practice (three years or less experience) who have the potential to be future leaders in family medicine academic and community service efforts.



Stacy Bartlett MD

University of Pittsburgh
School of Medicine
UPMC Shadyside
Family Medicine Residency



Odinaka Anyanwu, MD

Warren Alpert Medical School
of Brown University

**We've got HEART!
We've got GRIT!
We are FAMILY MEDICINE!**

Award Winners

2024 FMEC This We Believe Award Winners

Modeled on the successful "This I Believe" project, as heard on National Public Radio, the FMEC offers physicians, physicians-in-training, and medical students engaged in family medicine organizations, the opportunity to express their core beliefs about serving others. We believe that sharing our passion for being healers will not only strengthen our ability to serve others, but also will connect us to one another and strengthen our mission in family medicine.



Sandy Wang MD, MPH
University of Rochester
"I Believe Patients are People"



Carla Jardim MD
Hunterdon Family Medicine Residency
"The Value of Things Not Measured"

2024 FMEC Creative Writing Award Winners



Stacey Robert, MD
1st place prose
"The Seasons of Life"
Program Director, WellSpan
York Hospital Family
Medicine Residency



Srijesa Khasnabish, DO, PGY-2
1st place poetry
"No Time for Loss"
University of Massachusetts Medical Center,
Fitchburg Family Practice



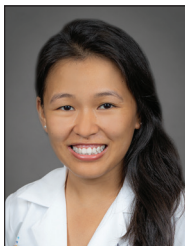
Hugh Silk, MD, MPH, FFAFP
2nd place prose (tie)
"Letter to Myself on My First Day"
Professor and Vice Chair of Community Health,
Department of Family Medicine and Community Health
University of Massachusetts Chan Medical School



Mary Rose Puthiyamadam, MD
2nd place poetry
"Doctor Daughter"
Phelps Family Medicine Residency Program



Najya A. Williams, MSIV
2nd place prose (tie)
"Code T"
Lewis Katz School of Medicine at Temple University



Tshering Sherpa, DO
3rd place prose
"Unveiling a Layer of Global Health: Exploring Flaws and Benefits Through Narrative Medicine"
Phelps Family Medicine Residency Program

Preconferences and Special Events

WEDNESDAY, SEPTEMBER 18, 2024

7:00 pm – 9:00 pm ALSO Instructor Course Faculty Dinner
401-403, 4th Floor

THURSDAY, SEPTEMBER 19, 2024 – MORNING

7:30 am – 12:00 pm IMPLICIT Network Meeting
Franklin Hall 11, 4th Floor

8:00 am – 12:00 pm Point-of-Care Ultrasound (POCUS) Workshop #1
Franklin Hall 5-6-7-8, 4th Floor

8:30 am – 12:00 pm FMEC Board of Trustees Meeting
401-403, 4th Floor

THURSDAY, SEPTEMBER 19, 2024 – AFTERNOON

11:30 am – 5:30 pm Advanced Life Support in Obstetrics (ALSO) Instructor Course
411-412, 4th Floor

12:00 pm – 6:00 pm FMEC Healthcare Innovators Network
Franklin Hall 10, 4th Floor See QR code to the right for agenda

12:30 pm – 2:30 pm Nexplanon Training #1
407-409, 4th Floor

1:00 pm – 5:00 pm Point-of-Care Ultrasound (POCUS) Workshop #2
Franklin Hall 5-6-7-8, 4th Floor

1:00 pm – 5:00 pm Dermatology Workshop – Patient Care that is More than Skin Deep: Dermatologic Office
Franklin Hall 9, 4th Floor Procedures for Family Medicine Providers

1:00 pm – 5:00 pm FACTS About Fertility: Reproductive Life Planning and Resources for You and Your Patients
406, 4th Floor

3:00 pm – 5:00 pm Nexplanon Training #2
407-409, 4th Floor

THURSDAY, SEPTEMBER 19 – EVENING

6:00 pm – 7:00 pm FMEC President's Welcome and Celebration (invitation only)
401-403, 4th Floor

FRIDAY, SEPTEMBER 20

8:00 am – 9:00 am FMEC Past Leaders Breakfast (invitation only)
405, 4th Floor

9:00 pm – 10:00 pm NYSAFP Reception
Franklin Hall 7, 4th Floor

SATURDAY, SEPTEMBER 21

7:00 am – 8:00 am PAFP Program Directors Meeting
401-403, 4th Floor

12:30 pm – 1:30 pm Integrative Health Learning and Teaching Network
412, 4th Floor

12:30 pm – 1:30 pm Faculty Development Committee
Franklin Hall 9, 4th Floor

12:30 pm – 1:30 pm Residency Program Coordinator/Administrator Group
Franklin Hall 10, 4th Floor



Follow this QR code to
see the FMEC Healthcare
Innovators Network agenda

Schedule at a Glance

Workshops, seminars and other educational programs are in **orange text** in the schedule below.
Meals for attendees are in **blue text**.

WEDNESDAY, SEPTEMBER 18, 2024

4:00 pm – 7:00 pm Early Arrivals Registration

THURSDAY, SEPTEMBER 19, 2024

11:00 am – 7:00 pm Registration

Various Times Preconferences (see page 12)

11:30 pm – 1:00 pm **Lunch is available** for preconference attendees only

FRIDAY, SEPTEMBER 20, 2024

7:00 am – 8:30 pm Registration

8:00 am – 12:00 pm Exhibitor Registration and Set-up

8:00 am – 9:00 am **Continental breakfast is available**

9:00 am – 12:30 pm Academic Presentations

9:00 am – 10:00 am (15-minute transition break)

10:15 am – 11:15 am (15-minute transition break)

11:30 am – 12:30 pm

12:00 pm – 5:30 pm Exhibitor Booth Hours – VISIT THE EXHIBITS

12:30 pm – 2:00 pm **Opening Plenary:** Conference Welcome, Awards, Speaker.
Lunch will be served.

2:00 pm – 2:30 pm Afternoon Break – VISIT THE EXHIBITS

2:30 pm – 4:45 pm Academic Presentations

2:30 pm – 3:30 pm (15-minute transition break)

3:45 pm – 4:45 pm

4:45 pm – 5:30 pm Evening Break – VISIT THE EXHIBITS

5:30 pm – 7:00 pm **Dinner Plenary:** FMEC Updates, Awards, Speaker.
Dinner will be served.

7:00 pm – 9:00 pm Residency Fair. **Dessert will be served.**

Schedule at a Glance

SATURDAY, SEPTEMBER 21, 2024

7:00 am – 5:00 pm	Registration
7:00 am – 8:30 am	Continental breakfast is available
7:00 am – 8:00 am	Breakfast Table Discussions
8:00 am – 2:30 pm	Exhibitor Booth Hours – VISIT THE EXHIBITS
8:00 am – 10:15 am	Academic Presentations
	8:00 am – 9:00 am
	9:15 am – 10:15 am
10:15 am – 11:00 am	Morning Break – VISIT THE EXHIBITS
10:15 am – 12:00 pm	Poster Set-up
	Headhouse Tower Liberty Ballroom
11:00 am – 12:00 pm	Academic Presentations
	11:00 am – 12:00 pm
12:00 pm – 2:30 pm	Learn at Lunch Opportunities
	Pick up a boxed lunch and visit posters, exhibits and clinical camp tables
	<ul style="list-style-type: none"> Exhibits (open continuously) Residency Program Coordinator/Administrator Networking Meeting Poster Presentation Sessions <ul style="list-style-type: none"> Session 1: 12:00 pm – 1:10 pm (10-minute transition break) Session 2: 1:20 pm – 2:30 pm Clinical Camp Sessions <ul style="list-style-type: none"> Session 1: 12:00 pm – 1:10 pm (10-minute transition break) Session 2: 1:20 pm – 2:30 pm Committee/Interest Group Meetings (12:30 pm – 1:30 pm) <ul style="list-style-type: none"> Integrative Health Learning and Teaching Network Faculty Development Committee Residency Program Coordinator/Administrator Group
2:30 pm – 3:30 pm	Academic Presentations
	2:30 pm – 3:30 pm
3:45 pm – 4:45 pm	Closing Plenary:
	FMEC Updates, Awards, Speaker
4:45 pm – 6:45 pm	Residency Fair
6:45 pm	ANNUAL MEETING CONCLUDES
7:00 pm	Residency Fair Booth Breakdown

SUNDAY, SEPTEMBER 22, 2024

No programming is scheduled

Visit the Exhibits!

Exhibitors provide critical support to the FMEC Annual Meeting, and they educate you and your residency programs about new products and services that you need. Please take time to learn from the exhibitors.

Exhibit Location:

Pre-function 4th Floor

Exhibit Hours:

Friday, 12:00 pm – 5:30 pm

Saturday: 8:00 am – 2:30 pm

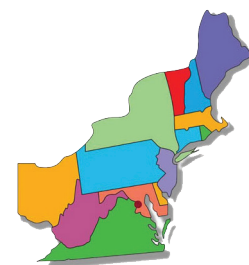


About the FMEC

The Family Medicine Education Consortium (www.fmec.net) is a catalyst, convener, and incubator that connects those interested in improving health by strengthening family medicine/primary care services and medical education. The FMEC mission is to improve the health of the nation by strengthening family medicine and primary care to meet its full potential. The FMEC is a non-profit organization incorporated in Ohio (FEIN 31-1436038).



The FMEC serves 14 states and the District of Columbia in the northeastern U.S., from New England to Virginia and west to Ohio. FMEC's constituency in these states includes nearly 60 Medical School Departments of Family Medicine and over 220 family medicine residency programs accepting about 1,300 first year residents annually. The FMEC region graduates over 9,600 medical students, with about one-quarter from osteopathic medical schools. Combined, the FMEC region is home to over 35,700 professional active family physicians.



FMEC offers Individual Memberships (\$30 for Residents and Fellows, \$75 for others) as well as Organizational and Academic Partnerships for health systems, departments of family medicine and family medicine residency programs (\$1,000 to \$25,000 and over). Over 90 institutions have joined the FMEC. The FMEC regularly communicates to over 5,000 individuals who are members, organizational partners, and past meeting attendees.

Student Scholarship Major Donors

The FMEC thanks over 40 individuals, residency programs, and others who contribute each year to the student scholarship fund. All donors are recognized on signs and the FMEC website. The following donors gave \$2,500 or more to this year's scholarship fund.

American Academy of Family Physicians
 American University of Antigua College of Medicine
 Crozer Chester Medical Center Staff
 Delaware County Medical Hospital Staff
 Global University Systems (GUS Medical and Veterinary Schools)
 Independence Blue Cross
 Lancaster General Hospital Medical Staff
 New York State Academy of Family Physicians
 Pennsylvania Academy of Family Physicians
 R. Claire Weaver Memorial Endowment
 Ross University School of Medicine
 St. George's University School of Medicine
 UPMC Altoona

Thank You to Our 2024 Sponsors



Exhibitors

*As of August 16, 2024

FMEC Annual Meeting exhibitors and sponsors must adhere to FMEC policies ([see *fmec.net/policies*](https://fmec.net/policies)), and their participation in the meeting is approved by the Exhibitor Subcommittee of the FMEC Board. Participation as an exhibitor or sponsor does not constitute or imply FMEC endorsement of a company or their products or services. The FMEC thanks Susan Kaye MD, Heather Paladine MD, MEd, Molly Talley, and Pamela Vnenchak MD, for serving as the 2024 Exhibitor Subcommittee.

Organization	Address Main City	State
ACOFP Foundation	Chicago	IL
Allegheny Health Network	Pittsburgh	PA
AMBOSS	New York	NY
Bassett Medical Center	Cooperstown	NY
Bayhealth Medical Center	Dover	DE
Catholic Medical Association	Fort Washington	PA
Elsevier	Philadelphia	PA
FACTS About Fertility	Lancaster	PA
Geisinger	Danville	PA
Global Ultrasound Institute (GUSI)	Oakland	CA
Hudson Headwaters Health Network	Queensbury	NY
IMPLICIT Network	Lancaster	PA
Inspire Medical Systems	Minneapolis	MN
MedStar Health, Inc.	Columbia	MD
Mid Atlantic Permanente Medical Group	Rockville	MD
Navigate Student Loans	Saint Paul	MN
One Medical	San Francisco	CA
Optum	Eden Prairie	MN
Penn Medicine	Philadelphia	PA
Pennsylvania Association of Community Health Centers	Wormleysburg	PA
PracticeLink	Hinton	WV
Rosh Review, A Blueprint Test Prep Company	Manhattan Beach	CA
St. Luke's University Health Network	Bethlehem	PA
TidalHealth	Salisbury	MD
TriageMD	Radnor	PA
TrueLearn	Charlotte	NC
UPMC	Harrisburg	PA
WellSpan Health	York	PA

Legacy Donors

The Alexander-Rager Family
Scott G. Allen, MS
Andrea Anderson, MD
Laurence Bauer, MSW, MEd
Don & Sharon Beckstead
David Blandino, MD
Jeffrey Borkan, MD, PhD
Bruce Bushwick, MD
Craig Clark, MD
Tracey Conti, MD
Leonard Convisser
Dr. Amy Crawford-Faucher & Dr. Augustine Faucher
Mario DeMarco, MD, MPH
Dr. Adam & Lauren Dimitrov
Drs. Alan & Joanna Douglass
Susan & Jerry Eckert
Catherine Feaga, DO
Corey Fogleman, MD
Aaron George, DO
Dennis Gingrich, MD
Drs. Andrea Gordon and Allen Shaughnessy
Joseph Gravel, MD
Paul Gross, MD
Samuel Jones, MD
Mitch Kaminski, MD
Susan Kaye, MD
Drew Keister, MD
Kathleen Kempton
Drs. Kenneth Lin & Marguerite Duane
Leon McCrea II, MD, MPH
Jennifer L. Middleton, MD, MPH
Ranit Mishori, MD, MHS, FAAFP
Robert Motley, MD
Larry Nolan
Heather Paladine MD, MEd, FAAFP
Catherine Florio Pipas, MD, MPH
Stacy E. Potts, MD and Family
Goutham Rao, MD
Michael P. Rosenthal, MD
Alan & Nelly Roth
Joseph Scherger, MD, MPH
Julie Schirmer, LCSW

Lisa Schwieterman
Martha Seagrave PA-C, RN
Society of Teachers of Family Medicine
Jen Sparks, MD
Molly Talley
Deborah Taylor, PhD
Fraser "Fred" Tudiver, MD
Kathy & Mike Tuggy
Pam Vnenchak, MD
Dr. William & Jennifer Warning
Donald "Raj" Woolever, MD, FAAFP & Cindy Dechenes
Julie Yeh, MD
Dr. Nikitas & Diana Zervanos
Anonymous – Honorary Gift

The FMEC has inspired me and fed my passion. It has nurtured my beliefs and it has provided me a tribe to believe together. I would not be the family physician and educator I am, if not for the FMEC and for Larry Bauer's constant support, curiosity, and inspiration.

– FMEC Past President
Stacy Potts, MD, FAAFP

About the Legacy Campaign

Launched in 2020, the FMEC Legacy Campaign is ensuring the future success of the FMEC while honoring the work of founding CEO Larry Bauer and all the family physicians who have made the FMEC a critical part of family medicine in the northeast U.S. The Legacy Campaign's Strategic Reserve Fund supports the long-term survival of the organization; the Greatest Need Fund provides the Board with the resources to be nimble and face new challenges; and the Operational Growth Fund will grow the infrastructure of the FMEC as an organization. As the FMEC wraps up the Legacy Campaign in 2024, we are proud to announce we have raised over \$360,000 for the FMEC's future from over 50 dedicated FMEC leaders and supporters. We are eternally grateful to these donors for their support of family medicine and their faith in the FMEC.

Delaware Valley
Community Health, Inc.®

Family Medicine Residency Program

SOUTHEASTERN PA'S 1ST TEACHING HEALTH CENTER

The mission of Delaware Valley Community Health, Inc. Family Medicine Residency Program is to create a community-based learning environment for Family Medicine Residents where physicians are inspired to develop expertise in Primary Care and to dedicate themselves to the care of underserved patients, their families, and their community.

DVCH responds to the need for urban-based medical training through our dedication and commitment to Graduate Medical Education.



Visit Our Website!



#DVCHSTRONG



Programming

Wednesday, September 18
Thursday, September 19

WEDNESDAY, SEPT. 18, 2024

4:00 pm – 7:00 pm **Registration**
Foyer 3rd Floor

7:00 pm – 9:00 pm **ALSO Instructor Course Faculty Dinner (invitation only)**
401-403
Scott Hartman MD, Kristina Gracey MD, MPH, Odinaka Anyanwu MD, Heidi Kistler MD,
Stephen Ratcliffe MD, MSPH, Andrew Smith MD, Aimee Smith DO,
Rowena Pingul-Ravano MD, FAAFP, Brianna Moyer MD

THURSDAY, SEPT. 19, 2024

7:30 am – 8:30 am **Breakfast for Business Meeting Attendees**
Foyer 3rd Floor

7:30 am – 12:00 pm **IMPLICIT Network Meeting**
Franklin Hall 11
MCH
Mario DeMarco MD, MPH

8:00 am – 12:00 pm **Point-of-Care Ultrasound (POCUS) Workshop #1**
Franklin Hall 6-7-8
POCUS, PRO
Kevin Bergman MD, Mena Ramos MD

8:30 am – 12:00 pm **FMEC Board of Trustees Meeting**
401-403

11:00 am – 7:00 pm **Registration Opens**
Foyer

11:30 am – 1:00 pm **Lunch for Preconference Attendees Only**
Pre-function 4th Floor

11:30 am – 5:30 pm **Advanced Life Support in Obstetrics (ALSO) Instructor Course**
411-412
MCH
Scott Hartman MD

11:30 am – 5:30 pm **Advanced Life Support in Obstetrics (ALSO) Instructor Course Breakouts**
410, 413, 414, 415
MCH
Scott Hartman MD,
Kristina Gracey MD, MPH,
Odinaka Anyanwu MD, Heidi Kistler MD,
Stephen Ratcliffe MD, MSPH,
Andrew Smith MD, Aimee Smith DO,
Rowena Pingul-Ravano MD, FAAFP,
Brianna Moyer MD

Visit the Exhibits!

Exhibitors provide critical support to the FMEC Annual Meeting, and they educate you and your residency programs about new products and services that you need. Please take time to learn from the exhibitors.

Exhibit Location:

Pre-function 4th Floor

Exhibit Hours:

Friday, 12:00 pm – 5:30 pm
Saturday: 8:00 am – 2:30 pm

12:00 pm – 6:00 pm

Franklin Hall 10

INN

FMEC Healthcare Innovators Network

The Revolution has Begun (If You Know Where to Look)

Laurence Bauer MSW, MEd, Jeffrey Brenner MD, Scott Conard MD, Alan Roth DO, Luigi Tullo MD, Justin Schrager MD, MPH, Steve Waldron MD, Len Fromer MD, Michael Fine MD, Bryce Heinbaugh MBA, Rebecca Etz PhD, George Garro MD, Robert Motley MD

12:30 pm – 2:30 pm

408-409 REPRO, PRO

Nexplanon Training #1

Sarah Inés Ramírez MD, Leon McCrea II MD, MPH, Heather Paladine MD, MEd, FAAFP

1:00 pm – 5:00 pm

Franklin Hall 6-7-8

POCUS, PRO

Point-of-Care Ultrasound (POCUS) Workshop #2

Kevin Bergman MD, Mena Ramos MD

1:00 pm – 5:00 pm

Franklin Hall 9

PRO, DMCC

Dermatology Workshop – Patient Care that is More than Skin Deep: Dermatologic Office Procedures for Family Medicine Providers

Amy Zack MD, FAAFP, Robert Bales MD, MPH, FAAFP, John Hanicak MD, Melanie Malec MD, FAAFP, Joseph Mandato DO

1:00 pm – 5:00 pm

406

REPRO

FACTS About Fertility: Reproductive Life Planning and Resources for You and Your Patients

Marguerite Duane MD, MHA, MSPH, FAAFP, Robert Motley MD, Ross Bones-Castro MD, Victoria Lussier MD, Daniel Miller MD, Logan Waechtler MPH, MPA, Jean Golden-Tevald DO

3:00 pm – 5:00 pm

408-409 REPRO, PRO

Nexplanon Training #2

Sarah Inés Ramírez MD, Leon McCrea II MD, MPH, Heather Paladine MD, MEd, FAAFP

6:00 pm – 7:00 pm

401-403

FMEC President's Welcome and Celebration (invitation only)

7:30 pm – 10:00 pm

408-409

FMEC Board of Trustees Dinner (invitation only)

TRACKS

Abbreviation	Name
ACGME	ACGME/Guidelines and Standards
ADSU	Addiction/Substance Use
ADV	Advocacy
ART	Art/Narrative Medicine
CE	Community Engagement/Involvement
DEI	Diversity, Equity and Inclusion
DMCC	Disease Management/Clinical Care
F	Faculty
GER	Geriatric/Palliative Care
GH	Global Health/Immigrants/Refugees
IH	Integrative Medicine/Whole Person Health
IMM	Immunizations
INN	Innovation
MCH	Maternal and Child Health

Abbreviation	Name
MH	Mental Health
NT	Nutrition
OSTEO	Osteopathic
POCUS	Point-of-Care Ultrasound
PRO	Procedures
PTSIP	Preparing to Succeed in Practice
R	Resident
REPRO	Reproductive Health
RESQI	Research/Quality Improvement
RM	Rural Medicine
S	Student
SDOH	Social Determinants of Health
TECH	Artificial Intelligence/Technology
WELL	Wellness

FRIDAY, SEPT. 20, 2024

7:00 am – 8:30 pm

Foyer 3rd Floor

Registration

8:00 am – 9:00 am

4th and 5th Floor Foyers

Continental Breakfast for Meeting Attendees

8:00 am – 12:00 pm

Pre-function 4th Floor

Exhibitor Registration and Set-Up

Friday 9:00 am – 10:00 am WORKSHOPS – Group #1

W01 OSTEO

Franklin Hall 8

Highest Yield OMT for the MD

Taylor Rider MS, DO, Dana Kirschner DO, FAAFP

W02 POCUS, PRO

Franklin Hall 6

Hocus POCUS: An Introduction to the Magical Application of Point-of-Care Ultrasound

Brandon D'Souza BS, BA, Annie Du BA, Jiayi Huang BS, Preston Rogers BS, Craig Goodmurphy PhD, MSc

W03 F, ACGME

405

Improving Resident Assessments with Direct Observation

Margaret Baylson MD, MPH, Zachary Kosak MD

W04 WELL, PTSIP

Franklin Hall 9

Is This Right For ME? Aligning Your Work and Values

Laura Sturgill MD, MED, Elizabeth Dykhous PhD

W05 TECH, INN

Franklin Hall 10

ChatGPT Basics: An Introduction to Prompt Engineering and GPT Model Building

Derek Barnett BS, Josh Steinberg MD

W06 F, R

412

Getting Started in Medical Writing: Tips From AFP Editors

Kenneth Lin MD, MPH, Corey Fogleman MD, Michelle Nelson MD

W50 F, R, S

401-403

Leading as You Learn: Leadership Skills for Clerkships and Beyond

Andrew Lutzkanin MD, FAAFP

Friday 9:00 am – 10:00 am SEMINARS – Group #1

S01 F, ACGME

Franklin Hall 11

Adapting Elective Experiences to Meet New ACGME Requirements

Elise Hogan MD, MPH, FAAFP, Anna Filip MD, FAAFP

S02 F, ACGME

408-409

Retaining URM Residents and Faculty: A Seat at the Table

Suganya Mahinthan MD, Katherine Holmes MD

S03 DMCC

412

Hereditary Cancer Risk Assessment in Primary Care: Barriers and Solutions

Elise Laflamme MD, Ina Bodinaku MD, Leah Genn MD, Catherine Henckel MD, Brenda Navarro-Galindo MD

S04 F, ACGME

404

It's a Tough Job: Residency Administration in the Post-COVID Era

Virginia Van Duyne MD, Elizabeth Dykhous PhD

S05 GH, DEI

406

Initial Medical Care for Refugees, Asylum Seekers and Migrating Persons

Jacqueline Bhandari MD, Deborah Alfa MD, Peter Yang MD, Swetha Maddipudi MD, MPH, Radeeb Akhtar MD, MPH, AAHIVS

S06 SDOH, DMCC

407

A Method to Incorporate Health-Related Social Needs into a Patient's Clinical Encounter

Bode Adebambo MD, Hejin Jeong, Antoinette Abou-Haider MD, Hemalatha Senthilkumar MD

Friday 9:00 am – 10:00 am RESEARCH PAPER PRESENTATIONS – Group #1

9:00 am – 9:30 am

RPO1 MCH, DMCC

414

Improving Diagnosis and Management of Pediatric Hypertension: Feeling the Pressure!

Cody Klinker MD, Jon Montemayor MD

9:30 am – 10:00 am

RPO2 SDOH, CE

414

ACEs: Building Community Resilience via Collaborative Screening

Vikrant Dhindsa DO, Cindy Barter MD, Mark Scheuerman, Nikhil Potpally MD,

Kyrstle Carkeek MD, Jan Downs, MPS, LMFT, ATR-BC

Friday 9:00 am – 10:00 am PAPER PRESENTATIONS – Group #1

9:00 am – 9:15 am

Paper01 ADV, DEI

413

Breaking Down Dis: History of Ableism and the Disability Rights Movement

Christa Wilk BS, BA, Samyukta Karthik MPhil, BS, Gretchen Maurer BA, MS, DO

9:15 am – 9:30 am

Paper02 DEI, F

413

Evaluating a Novel Disability Education and Awareness Event for

Health Professions Trainees

Allison Casola PhD, MPH, MCHES, Joely Mass MD, Olivia Rea BS, Chelsea Hammell MS,

Mary Stephens MD, MPH, FAAFP

9:30 am – 9:45 am

Paper03 DEI, CE

413

Accessing Health Care for Persons with a Disability: Service Animals in the

Health Care System

Kathleen Nurena MD, Mariel Katz MD, Desiree Leary DO, Rheba Sam DO

9:45 am – 10:00 am

Paper04 DEI, F

413

Designing a Didactic Series for Family Medicine Residents on the Care of Patients with Intellectual and Developmental Disabilities

Mary Stephens MD, MPH, Karin Roseman MSW, LCSW, Allison Casola PhD, MPH, MCHES,

Kaitlyn Davis MS, MPH

Friday 9:00 am – 10:00 am LECTURE DISCUSSION – Group #1

9:00 am – 9:20 am

LDO1 ADV

410

A Call to Action! How to Support and Advocate for Patient Voting Rights for the

Upcoming US General Election

Deanna Gorgei DO, Kirsten Ward MD, Raven Eberth MD, Nicole Kushner DO,

Henrique Jaime MD

9:20 am – 9:40 am

LDO2 ADV

410

Policy and Advocacy for Family Medicine Providers, Educators, and Researchers

Kaitlyn Davis MS, MPH, Allison Casola PhD, MPH, MCHES, Mary Stephens MD, MPH

9:40 am – 10:00 am

LDO3 DEI, ACGME

410

Restructuring the Recruitment Evaluative Process: Improving Diversity, Equity,

and Inclusion in Residency Recruitment

Anna Filip MD, FAAFP, Elise Hogan MD, MPH, FAAFP

Friday 9:00 am – 10:00 am LECTURE DISCUSSION – Group #2

9:00 am – 9:20 am

LDO4 F, ACGME

411

Documentation Essentials: Tips for Teaching Residents Excellent Inpatient Documentation

Brian Pickering DO

9:20 am – 9:40 am

LDO5 DMCC, F

411

Expansion of a Family Medicine Program to a Mobile Health Clinic:

Retrospective Review of Patient Characteristics and Outcomes

Benjamin Golden MD, James LaRosa MD, Anna Filip MD, L. Anna Thompson MPH, CHES,

Kimberly Williams MPH

9:40 am – 10:00 am

LDO6 DMCC

411

PKU in Family Practice

Thomas Wall MD

Friday 9:00 am – 10:00 am LECTURE DISCUSSION – Group #3

9:00 am – 9:20 am

LD07 DMCC, ADSU

415

Kratom Use Disorder

Katherine Mahon MD

9:20 am – 9:40 am

LD08 DMCC

415

Diabetes Care: An Integrated Approach

Jasmin Ortiz PharmD, Jaividhya Dasarathy MD, Eric Kim MD

9:40 am – 10:00 am

LD09 DMCC

415

Ehlers Danlos Syndrome for the Primary Care Physician

Caitlin Weber MD MS FAAFP IBCLC

Friday 10:15 am – 11:15 am

W07 OSTEO, PRO

Franklin Hall 8

WORKSHOP – Group #2

Got a Cold? D.O. Be Bold

Christina Corpus DO, Laura Bujold DO, Mary Garside DO, Samuel Lawyer DO, Felix Vergilis DO

W08 PRO

Franklin Hall 6

Splinting Upper Extremity Injuries

Rabin Chandran MD

W09 F, ACGME

Franklin Hall 7

Women in Medicine: The Development of a Program to Support Female Physicians

Lynne Unikel PhD, Lam Nguyet-Cam MD, Sara Baig MD

W10 F, S

405

From Interest to Impact: Students as Family Medicine Champions

Adam Bradley MM, Alison Johnston BS, Pavit Suri BS

W11 F, ACGME

Franklin Hall 9

Fabulous Feedback

Abbie Jacobs MD

W12 ART

Franklin Hall 10

Visual Arts in Medical Education: From Pencil to Practice

Annie Du BA, Brandon D'Souza BS, BA, Jiayi Huang BS, Michael P. Flanagan MD

Friday 10:15 am – 11:15 am

SEMINAR – Group #2

S07 TECH

412

Are Technological Advances a Threat or Benefit to Physician-Patient Relationship and Wellbeing of Physicians?

Jaividhya Dasarathy MD, Bode Adebambo MD, Christine Alexander-Rager MD, Eric Kim MD

S08 DMCC

406

Demystifying Medical Decision-Making Capacity

Timothy Pelkowski MD, MS, FAAFP

S09 REPRO

408-409

Contraception Counseling and Practice Recommendations for Patients with Complex Medical History

Esha Mehta MD, MPH, Jessica Quinn MD, Joi Spaulding MD, MS, Caitlin Weber MD, MS, FAAFP, IBCLC, Ivonne McLean MD

S10 MCH

401-403

Untangling New RSV Agents: Review of Recent Pharmacologic Prevention Strategies for Young, Old, and Pregnant

Eric Nemec PharmD, MEd, Henry Yoon MD

S11 ADSU

404

Substance Use Harm Reduction – Very Practical Tips

Laurel Banach MD, AAHIVS, Jillian Joseph MPAS, PA-C, Hugh Silk MD, MPH, FAAFP, Chloe Chaudhury MD, MPH, Victoria Ngo MD

S12 WELL, F

407

Physician Suicide and Discussing the Risks: Opening a Dialogue and Reviewing Resources

Shawna Koprucki MD, Anthony Brine PsyD

Friday 10:15 am – 11:15 am RESEARCH PAPER PRESENTATION – Group #2

10:15 am – 10:45 am
RPO3 *DEI, RESQI*
414

Implementing Racial Affinity Caucusing and Anti-Oppression Curriculum Across Three Residency Programs

Ivonne McLean MD, Janice Cyr LCSWR, Lindsay Blevins PhD, Sara Karp MD, Radeeb Akhtar MD

10:45 am – 11:15 am
RPO4 *DEI, RESQI*
414

Utilizing a Novel Feedback Tool to Promote Equitable Evaluations Among Residents

Marian Younge MD, Marybeth Sutter MD

Friday 10:15 am – 11:15 am LECTURE DISCUSSION – Group #4

10:15 am – 10:35 am
LD10 *DMCC*
410

Unmasking Abusive Head Trauma: The Case of Misdiagnosis in a Patient with Vomiting

Carla Reale MD, Ellen Bulbarelli MD

10:35 am – 10:55 am
LD11 *WELL*
410

Enhancing Family Medicine Resident Wellbeing and Patient Outcomes Through the Care Team Assistant Program

Ray Teets MD, Joe Li MD, MPH, MBS, Autumn Henry BS, Eric Wildstein BS, Naushad Amin MBBS, MS, MD

10:55 am – 11:15 am
LD12 *F, ACGME*
410

It's OK to Make Mistakes: Integrating a Culture of Safety into our Residency and Beyond

Megan McMullan MD, Marjorie Affel MD, Jincy Cherian DO

Friday 10:15 am – 11:15 am LECTURE DISCUSSION – Group #5

10:15 am – 10:35 am
LD13 *DMCC*
411

Sunny Side Up: A Workshop on Effective Sunscreen Application

Jiayi Huang BS, Brandon D'Souza BS, BA, Annie Du BA, Jill Stachowski BA, Michael Flanagan MD

10:35 am – 10:55 am
LD14 *DMCC, NT*
411

Dietary Supplements and Their Labels

Jessica Gale DO, Michael Eizyk MD, Justin Caskey DO

10:55 am – 11:15 am
LD15 *MH, NT*
411

Nutritional Support of Mental Health

Alan Remde MD, FAAFP, BC Integrative Medicines, Yemesrach Kerego MD

Friday 10:15 am – 11:15 am LECTURE DISCUSSION – GROUP #6

10:15 am – 10:35 am
LD16 *POCUS, PRO*
415

Practical Education and Implementation of Point-of-Care Ultrasound for a Family Physician

Henry Del Rosario MD

10:35 am – 10:55 am
LD17 *F*
415

Help! My Panel Just Exploded and Everyone is Complicated!

Laura Sturgill MD, MED, Virginia VanDuyne MD

10:55 am – 11:15 am
LD18 *F, NT*
415

Development of an Eating Disorders Curriculum Using an Interdisciplinary Team Approach

Thomas McGinley MD, Nicole Defenbaugh PhD, Allincia Michaud MD, Debora Cooper BS, RD, LDN, Jaclyn Michel BS, RD, LDN

Friday 10:15 am – 11:15 am PAPER PRESENTATION – GROUP #2

10:15 am – 10:30 am
Paper05 F, ADSU, RESQI
413

Creating a Substance Use Disorder Program and Curriculum in a Family Medicine Residency Program

James LaRosa MD, Kimberly Williams MPH, Anna Filip MD, FAAFP

10:30 am – 10:45 am
Paper06 ADSU, RESQI
413

Evaluation of a Contingency Management Program to Treat Substance Use Disorders within a Residency Program at an Independent Academic Medical Center

Deanna Gorgei DO, Kimberly Williams MPH, Kendall McDowell BSN, RN, PMH-BC, Jordan Franklin BS, James LaRosa MD

10:45 am – 11:00 am
Paper07 ADSU, MCH, RESQI
413

Development of the Perinatal Resources for Opiate Use Disorder (PROUD) Clinic in a Family Medicine Residency Training Site

Navid Roder MD, Maggie McGinty MPH, Mario DeMarco MD, Melissa Donze MPH, Nia Bhadra-Heintz MD

11:00 am – 11:15 am
Paper08 MCH, RESQI
413

Longitudinal Outcomes of Women Receiving Treatment For Perinatal Opioid Use Disorder

Cassandra Wang BS, Leah Hellerstein MD, MPH

Friday 11:30 am – 12:30 pm WORKSHOP – Group #3

W13 OSTEO
Franklin Hall 8

Finding Balance with Balanced Ligamentous Tension (BLT)

Craig Johnston DO, Brain Pickering DO

W14 POCUS, REPRO
Franklin Hall 6

Vaginal Birth Workshop for All: From Basic Cardinal Movements to Difficult Deliveries

Jennifer Cohn MD, Mario Demarco MD, MPH

W15 F, R
405

Speed-Mentoring with Female Leaders in Academic Family Medicine

Laura Bujold DO, Kenia Mansilla MD, Andria Matthews MD, Elizabeth Lorick MD, Nirali Patel DO

W16 ADV, R
Franklin Hall 9

Raise Your Voice: An Introduction to Advocacy

Stacey Robert MD, Molly Benoit MD, MPH, Anne Morris MD

W17 GH, SDOH
412

Practicing Trauma-Informed Care for Refugees and Migrants Using Case-Based Learning

Medha Palnati BA, NiLar Way BSN, RN., Krystal Lopez MD, Melanie Longhurst PhD, MEd

W18 DMCC, GER
401-403

Serious Illness Conversations: A Workshop for Primary Palliative Skills

Kathleen Mechler MD, Gillian Love MD, Holden Caplan MS4, Colleen Graham DO

Friday 11:30 am – 12:30 pm SEMINAR – Group #3

S13 TECH
Franklin Hall 10

Using Artificial Intelligence to Improve Education of Patients, Learners and Faculty: A Multi-Institution Panel Discussion

Nicole Elizabeth Delgado-Salisbury EdD, Karim Hanna MD, Shoaib Qadri MD, Dynell Pinder MD, Christopher Anghel MD

S14 F, ACGME
Franklin Hall 11

Achieving Desired Outcomes: Building a Competency-Based Curriculum

Donald Woolever MD, FAAFP, Sonya Hovsepian MD

S15 REPRO, MCH
408-409

The Unique Role of the Family Physician in Preconception Care and Chronic Disease Management

Cameron Nienaber MD

S16 OSTEO
404

Osteopathic Considerations for COVID, Influenza, and RSV

Christina Scartozzi DO, Gretchen Maurer DO, Megan Mendez-Miller DO

S17 DEI, GER
406

Polypharmacy in the Geriatric Population and the Role of De-Prescribing in Reducing Pharmacologic Burden

Eric Dultz MD, Andrew Goodbred MD, Lynne Unikel PhD

S18 SDOH
407

Hospital-Based Care for Acutely-Ill Adults Experiencing Homelessness: Maximizing Opportunities and Minimizing Harms

Andreas Lazaris MD, MSc, Jon Fricchione MD, Sandhya Kumar MD, MPH

Friday 11:30 am – 12:30 pm RESEARCH PAPER PRESENTATION – Group #3

11:30 am – 12:00 pm
RPO5 MCH, REPRO, RESQI
414

Healthy Mom, Healthy Family: Incorporating Maternal Interconception Care into Well-Child Visits

Jamie Macklin MD, MPH, FAAP, Lizbeth Lazaron MD, FAAFP, Hayley Southworth MS, Shadia Jallaq MA, Evelyn Quarshie MPH

12:00 pm – 12:30 pm
RPO6 MCH, REPRO, RESQI
414

Improving Fourth Trimester Care: Innovations and Outcomes from 9 IMPLICIT Sites

Sarah M. Minney BA, MD, Anna Fetterolf MPH, Brianna Moyer MD, Madison Dejong BE, Jeremiah M. Lee MD

Friday 11:30 am – 12:30 pm LECTURE DISCUSSION – Group #7

11:30 am – 11:50 am
LD19 F, ACGME
410

Your Friend in Professional Development: The Academic Action Plan

Rebecca Collins DO, MPH, FAAFP, CPE, Leslie Zeller LCSW-R

11:50 am – 12:10 pm
LD20 F, ADV
410

Federal Health Insurance Programs: What a Provider Needs to Know

Dexter Glasgow AAS, BS, MS, Sharon Graham BA, MA

12:10 pm – 12:30 pm
LD21 F, ACGME
410

Regional Learning Collaborative 1.0: Successes and Failures

Lauren Hoogewerff MD, Gabrielle Surick MD, Jincy Cherian DO, Katie Kuzel DO

12:30 pm – 12:50 pm
LD76 GH
410

Immigration Health Awareness – Female Genital Mutilation

Megan McBride DO, Lillian Hetson MD

Friday 11:30 am – 12:30 pm LECTURE DISCUSSION – Group #8

11:30 am – 11:50 am
LD22 ADSU, DMCC
411

Empowering Patients to Take Control of Their Health: Strategies for Successful Smoking Cessation

Aqsaa Chaudhry MD, MBA

11:50 am – 12:10 pm
LD23 IH, DMCC
411

Lifestyle Medicine for Breast Cancer

Miri Shlomi MD

12:10 pm – 12:30 pm
LD24 DMCC
411

Pancreatic Cancer in Primary Care

Sara-Ann Fox MD, Ryan Planer MD

12:30 pm – 12:50 pm
LD46 ADSU
411

Medication Assisted Treatment in Residency: Are There Benefits to a Clinic Model?

Sarah Morchen MD, DipABLM, Katherine Mahon MD, Marah Mattheus-Kairys MD

Friday 11:30 am – 12:30 pm LECTURE DISCUSSION – Group #9

11:30 am – 11:50 am
LD25 ART, WELL
415

The Use of Humanities to Decrease Burnout in First Year Family Medicine Residents

Lillian Hetson MD MA, Sara Lacy Psy D, Leah Welsh DO, Amythest Gauthier MD, Amanda Pannu MD

11:50 am – 12:10 pm
LD26 SDOH, MH
415

Impacts of Childhood Trauma on Adult Health Outcomes

Larry Nolan DO, Logan Wilson APRN-CNP, Amanda Campbell APRN-CNP, Emily Gaietto APRN-CNP, Cheri Bourne APRN-CNP

12:10 pm – 12:30 pm
LD27 MCH
415

Performance Improvement: Screening for Childhood Developmental Delays

Stephen Coyle MD, Eva Holzner MD, Shaakir McIntosh-Samuel MD, Aliza Saskin MD, Gurshan Singh Sandhu MD

Friday 11:30 am – 12:30 pm PAPER PRESENTATION – Group #3

11:30 am – 11:45 am

Paper09 RESQI

413

Impact of a Standardized Workflow On Prescribing Continuous Glucose Monitors for Patients with Type 2 Diabetes Mellitus with HbA1c Over 9% in a Primary Care Setting

Jonah Spoerndle BS, Elise Covell BS, Sherice Williams BS, Mohamed Alsabony, Amy Zack MD

11:45 am – 12:00 pm

Paper10 IMM, RESQI

413

Vexed About Being Vaxxed

Sukanya Srinivasan MD, MPH, Heather Mikes DO

12:00 pm – 12:15 pm

Paper11 RESQI

413

Bridging the Gap: Integration of a Clinical Pharmacist in Medication Review Post Hospital Discharge in a Primary Care Clinic

Sesilya Whaley PHARMMD, Michael Partin MD, Christopher Davis MD, MPH

12:15 pm – 12:30 pm

Paper12 NT, CE, RESQI

413

Food Boxes and First Fridays

Shari Holland MA, LPC, Sukanya Srinivasan MD, MPH

12:00 pm – 5:30 pm

Pre-function 4th Floor

Exhibitor Booth Hours

12:30 pm – 2:00 pm

Grand Ballroom 5th Floor

Plenary Lunch

12:30 pm – 2:00 pm

Grand Ballroom 5th Floor

Conference Welcome

Leon McCrea II MD, MPH, FMEC President

Marguerite Duane MD, MHA, Past FMEC Board Member

Raj Woolever MD, FMEC Immediate Past President

12:30 pm – 2:00 pm

Grand Ballroom 5th Floor

Award Presentations

Mid-Career Faculty Achievement Award

[Krishna M. Desai MD, FAAFP](#)

Columbia University Medical Center

New York Presbyterian Hospital Family Medicine Residency

Emerging Leader Award

[Stacy Bartlett MD](#)

University of Pittsburgh School of Medicine

UPMC Shadyside Family Medicine Residency

Emerging Leader Award

[Odinaka C. Anyanwu MD](#)

Warren Alpert Medical School of Brown University

12:30 pm – 2:00 pm

Grand Ballroom 5th Floor

Plenary Speaker

Laurence C. Bauer, MSW, MEd, Honorary Plenary

The Value Proposition for Physician Wellness in Family Medicine

[Margot Savoy MD, MPH, FAAFP](#)

Senior Vice President, Education, Inclusiveness and Physician Well-Being,

American Academy of Family Physicians

UPMC

LIFE CHANGING MEDICINE

The Friday lunch plenary is sponsored by FMEC
Platinum Partner, UPMC Life Changing Medicine.

2:00 pm – 2:30 pm

Pre-function 4th Floor

Afternoon Break: Please Visit Our Exhibitors

Friday 2:30 pm – 3:30 pm

W19 OSTEOP, MCH
Franklin Hall 8

W20 PRO
Franklin Hall 7

W21 F, ACGME
405

W22 ART
Franklin Hall 9

W23 REPRO
412

W51 F, ACGME
401-403

Friday 2:30 pm – 3:30 pm

S19 RESQI
Franklin Hall 10

S20 DEI, DMCC
407-409

S21 F, ACGME
Franklin Hall 12

S22 NT, DMCC
404

S23 ADSU, DMCC
406

S24 POCUS, F
407

S25 F, RESQI
Franklin Hall 6

Friday 2:30 pm – 3:30 pm

2:30 pm – 3:00 pm
RPO7 WELL, RESQI
414

3:00 pm – 3:30 pm
RPO8 WELL, F, RESQI
414

WORKSHOP – Group #4

Support of the Breastfeeding Dyad: Osteopathic Approach to Enhance the Latch and the Lactation Process

Cindy Barter MD, Yasmine Mourad DO, Dexter Loos DO, Abby Rhoads DO, Christina Bartoni DO (PGY2)

Precision Harvest: Mastering Shave and Punch Biopsies Using Tomatoes

Jiayi Huang BS, Annie Du BA, Brandon D'Souza BA, BS, Elen Deng BS, Michael Flanagan MD

Competency Based Medical Education: Applying This Educational Framework Continuously From Medical Student to Practicing Physician

Anne Morris MD, Stephen Berns MD, FAAHPM, Martha Seagrave RN, PA-C

Palette to Patient

Sriya Vontela BA, Samyukta Karthik MPhil, Noor Banihashem Ahmad BA, Brandon D'souza BS, BA, Michael Flanagan MD

Abortion and Pregnancy: A Values Clarification Workshop for Physicians and Medical Students

Ksenia Varlyguina MPH, Maya Bass MD, MEd, FAAFP

How Can I Get My Learners to Engage?! Using Interactive Teaching Techniques to Level Up your Teaching

Gretchen Shelesky MD, MS, FAAFP

SEMINAR – Group #4

Good Graphical Design: How to Display Your Data Effectively

Christopher Ryan MD, MS, MSPH

Racial Disparities in Skin Cancer

Aerial Petty DO, Hima Ekanadham MD, MS Epi, FAAFP

The Struggle is Real: How Executive Function Skills Affect Milestone Development

Lynne Unikel PhD, Abby Rhoads DO

So You Want to Prescribe Injectable Weight Loss Medication...?

Wade Rankin DO, CAQSM, FAAFP, Kelly Evans-Rankin MD, CAQSM, FAAFP

The Convergence of Substance Use Disorders and Serious Illness

Bradley Eckert MD, MS, Kate Kelley MD, MPH

Diagnostic Field of Dreams: A Practical POCUS Curriculum

John Hanicak MD

An Introduction to Teaching Health Centers

Brent Simmons MD, Karen Lazarus DO, MPH, Julia DeJoseph MD

RESEARCH PAPER PRESENTATION – Group #4

The Impact of Limiting Patient E-Message Character Count on Primary Care Providers' Work and Wellbeing

Makayla Lagerman MD, Christopher Davis, Matthew Silvis, Timothy Riley, Ben Fogel

Incentivizing Efficiency for Well-Being: Using a Point System For Timely Completion of Administrative Tasks

Brittany Ohe MD, Ashley Lipshaw DO, Lynne Unikel PhD

Friday 2:30 pm – 3:30 pm LECTURE DISCUSSION – Group 10

2:30 pm – 2:50pm

LD28 DMCC, F, R
410

Check Your Grasp on Clinical Guidelines: Compete for a Gift

Melanie Malec MD, FFAFP, Amy Zack MD, FFAFP, Alisa Mazzarella

2:50pm – 3:10pm

LD29 F, GER
410

More From the 5Ms: Shaping Residency Geriatric Curriculum Using The 5M Format

Alexandra Cohn MD, MSt, Rebecca Russell MD, Seema Dattani MD

3:10pm – 3:30 pm

LD30 F, ACGME
410

Beyond the Bedside: Unveiling the Academic Medicine Elective

Kaitlin O'Malley MD MPH, Raghda Bchech MD, AAHIVS, Janet Cruz MD

Friday 2:30 pm – 3:30 pm LECTURE DISCUSSION – Group #11

2:30 pm – 2:50pm

LD31 WELL, F, R
411

An Intersectional Approach to Resident Wellness.

Monica Javadian MD, Jacob Valvis DO, Cynthia Lamour DO, Wendi Schirvar PhD, Brooke Turnbaugh

2:50pm – 3:10pm

LD32 NT
411

Implementing an Interdisciplinary Weight Management Clinic into a Family Medicine Residency Program

Megan Maurer D.O., DipABOM, DipABLM, Michael Geishauser PharmD, Hannah Clevenger PA-C, Petrunak Jody RDN, LDN, Mercer Barbara RN

3:10pm – 3:30 pm

LD33 CE
411

Community Health Workers: Building Health at the Level of the Community

Robert Motley MD, MHCDS, Thomas Jenkins MS4, George Garrow MD

Friday 2:30 pm – 3:30 pm LECTURE DISCUSSION – Group #12

2:30 pm – 2:50pm

LD34 MH, MCH
415

Taking on the Youth Mental Crisis: A Pediatric Psychiatry Collaborative Model to Increase Clinician Comfort in Diagnosing and Prescribing

Elise Butkiewicz MD, Stuart Green DMH, LCSW, Anjali Sivendra MD

2:50pm – 3:10pm

LD35 MH, NT
415

Dietary Changes and Supplements for Prevention and Treatment of Depression

Christina Sedaghat DO, Christina Scartozzi DO

3:10pm – 3:30 pm

LD36 MH, IH
415

A Different Lens: Managing Patient's Mental Health Needs Through Lifestyle Medicine

Abbie Jacobs MD

Friday 2:30 pm – 3:30 pm PAPER PRESENTATION – Group #4

2:30 pm – 2:45 pm

Paper13 REPRO, RESQI
413

Improving the Wait Time for LARC Insertions in a Primary Care Clinic

Aderinsola Odetunde MD, MS, Janet Cruz MD

2:45 pm – 3:00 pm

Paper14 MCH, REPRO, RESQI
413

To OB or Not OB? That is the Question! From Concept Mapping to TIER-ing Family Medicine OB

Rowena D. Pingul-Ravano MD, Noopur Doshi MD, Cynthia L. Salter PhD, MPH

3:00 pm – 3:15 pm

Paper15 MCH, REPRO, RESQI
413

Maternity Care Provision in Family Medicine: A Descriptive Analysis

Allison Casola PhD, MPH, MCHES, Olivia Rea BS, Krys Foster MD, MPH, FFAFP, Zeynep Uzumcu MD, Christina Kelly MD

3:15 pm – 3:30 pm

Paper16 NT, DMCC, RESQI
413

The Intersection of Gestational Diabetes and Nutrition

Momina Ayub MD, MPH

Friday 3:45 pm – 4:45 pm

W24 OSTEO
Franklin Hall 8

W25 PRO, REPRO
Franklin Hall 6

W26 PRO, REPRO
Franklin Hall 7

W27 F (90-Minutes)
502

W28 F, R
408-409

W29 MCH, F
412

Friday 3:45 pm – 4:45 pm

S26 PTSIP
Franklin Hall 10

S27 DMCC
Franklin Hall 11

S28 PTSIP
Franklin Hall 12

S29 IH, DMCC, NT
404

S30 F, R
406

S31 WELL, PTSIP
407

S32 IMM
405

Friday 3:45 pm – 4:45 pm

3:45 pm – 4:15 pm
RPO9 ADSU, RESQI
414

4:15 pm – 4:45 pm
RP10 DMCC, RESQI
414

WORKSHOP – Group #5

OMM Workshop for Hands-On Techniques to Treat Viscerosomatic Reflex Dysfunction in Common Conditions

Christina Sedaghat DO, Christina Scartozzi DO, Theresa Yurkonis DO

The Papaya/Dragonfruit Workshop: A Hands-On Uterine Aspiration Training

Heather Paladine MD, MEd, FAAFP, Ksenia Varlyguina MPH, Maya Bass MD, MA, FAAFP, Caitlin Weber MD, MS, IBCLC, FAAFP, Martha Simmons MD, FAAFP, Libby Wetterer MD

Difficult IUD Removals: Tips and Tricks

Azmina Bhayani MD, MPH, Julie Johnston MD, FAAFP

Paradigm Shift in Advanced Care Planning: Tools and Conversation Skills for Training FM Residents

Heather Mikes DO, FAAHPM, Sukanya Srinivasan MD, Cara Marshall MD, Tanya Campus MD

Running an Effective Meeting

Alexandria Taylor PharmD, Madison Abbs PharmD, Drake Meaney PharmD

Incorporating Lactation into Family Medicine Curriculum

Jennifer Somers MD, NABBLM-C, Hannah Pearson MD, Taylor Lautzenhiser MD

SEMINAR – Group #5

Preparing for Financial Success as a New Physician

James Hemphill BA, CFP, CIMA, ChFC, CPWA, Joy Sorenson Navarre

You CAN Cure Hepatitis C

Kristina Zimmerman MD

Searching for Your First Job: A Panel Discussion

Brenda Reed MS, CPRP, William Callahan DO, Sarah D. Baden MD, MAHA, FAAFP

Two Models for Implementing Curricular and Clinical Lifestyle and Obesity Medicine Education in Family Medicine Residencies

Marah Mattheus-Kairys MD, Mark Cassano PsyD, Sarah Morchen MD, DIPABLM, Elizabeth Anderson MD, FAAFP, DipABLM, Adwoa Boahene MD, MPH, DipABLM, Kelley Dickson DO, Keri Rosen DO

Imposter Syndrome: How to Limit its Power

Esther Strahan PhD, Jia Meng MD

Investing in our Future: Challenging The Status Quo of Physician Wellness

Nguyet Cam-Lam MD, Renata Carneiro PhD

HPV Vaccination Challenges: Clinical Insights and Best Practices

Diana Bonaccorsi DO

RESEARCH PAPER PRESENTATION – Group #5

Implementation of Screening for Substance Use Disorders and Analysis of Patient Substance Use Behaviors in a Family Medicine Resident Clinic

Mark Bucsek MD, PhD, Caelan Hyland MD, Michael Paronish MD, Shawna Koprucki MD

Improving Lung Cancer Screening Rates in an Urban, Underserved Primary Care Clinic

Julia Carroccio DO, Daniella Caudle MD, Patty Diaz-Hall DO, Allison Myers MD, Jaividhya Dasarathy MD

Friday 3:45 pm – 4:45 pm

LECTURE DISCUSSION – Group #13

3:45 pm – 4:05 pm

LD37 F, ACGME
410

Critiquing Language Choice in EMR-Style Notes to Foster Discussion of Cultural Humility and Intersectionality in PC Clerkship

Claire O'Laughlin BA, MA, Sonna Shah BS, Tahina Ahmed BS, Lee Eisner PhD, Crystal Marquez MD

4:05 pm – 4:25 pm

LD38 F, ACGME
410

Do You Need a Back-Up to Your Back-Up?

Jennifer Somers MD, NABBLM-C, Nicholas Weida MD

4:25 pm – 4:45 pm

LD39 F, ACGME
410

In with the New, Out with the Old? Midpoint Evaluation Forms

Laura Bujold DO, Kiran Lorick MD

Friday 3:45 pm – 4:45 pm

LECTURE DISCUSSION – Group #14

3:45 pm – 4:05 pm

LD40 F, NT
411

Culinary Medicine

Teresa Holt MD, FAAFP

4:05 pm – 4:25 pm

LD41 WELL
411

Addressing Wellness: An Evolving Approach to Burnout

Jacob Valvis DO, Monica Jjavadian MD, Cynthia Lamour DO, Wendi Schirvar PhD, Brooke Turnbaugh

4:25 pm – 4:45 pm

LD42 DMCC
411

Hyperparathyroid Circus

Somu Chatterjee MD, Hillary Mount MD

Friday 3:45 pm – 4:45 pm

LECTURE DISCUSSION – Group #15

3:45 pm – 4:05 pm

LD43 ADSU
415

Baseline Levels of Physical Activity Among Patients Treated for Opioid Use Disorder

Joe Mandato BS, Rei Kola MS, Robert Bales MD

4:05 pm – 4:25 pm

LD44 ADSU
415

How to Start a Substance Use Disorder Clinic: Tips and Tricks to Grow Your Program and Residents

Gregory Jaffe MD, MEd, Suzanna Hossein DO, MS

4:25 pm – 4:45 pm

LD45 ADSU
415

Successful Discontinuation of Sublingual Buprenorphine Treatment Using Extended Release Buprenorphine Injection for Opioid Use Disorder

Velam Madhu MD, Jason Burmeister MD, Jeanne Spencer MD

TRACKS

Abbreviation	Name
ACGME	ACGME/Guidelines and Standards
ADSU	Addiction/Substance Use
ADV	Advocacy
ART	Art/Narrative Medicine
CE	Community Engagement/Involvement
DEI	Diversity, Equity and Inclusion
DMCC	Disease Management/Clinical Care
F	Faculty
GER	Geriatric/Palliative Care
GH	Global Health/Immigrants/Refugees
IH	Integrative Medicine/Whole Person Health
IMM	Immunizations
INN	Innovation
MCH	Maternal and Child Health

Abbreviation	Name
MH	Mental Health
NT	Nutrition
OSTEO	Osteopathic
POCUS	Point-of-Care Ultrasound
PRO	Procedures
PTSIP	Preparing to Succeed in Practice
R	Resident
REPRO	Reproductive Health
RESQI	Research/Quality Improvement
RM	Rural Medicine
S	Student
SDOH	Social Determinants of Health
TECH	Artificial Intelligence/Technology
WELL	Wellness

Friday 3:45 pm – 4:45 pm

3:45 pm – 4:00 pm

Paper17 TECH, RESQI

413

4:00 pm – 4:15 pm

Paper18 TECH, RESQI

413

4:15 pm – 4:30 pm

Paper19 SDOH, TECH, RESQI

413

4:30 pm – 4:45 pm

Paper20 TECH, RESQI

413

Friday 3:45 pm – 4:45 pm

3:45 pm – 3:52 pm

CSS01 DEI, SDOH

401-403

3:52 pm – 3:59 pm

CSS02 WELL

401-403

3:59 pm – 4:06 pm

CSS03 WELL

401-403

4:06 pm – 4:13 pm

CSS04 DEI

401-403

4:13 pm – 4:20 pm

CSS05 DMCC

401-403

4:20 pm – 4:27 pm

CSS06 WELL

401-403

4:27 pm – 4:34 pm

CSS07 DMCC

401-403

4:34 pm – 4:41 pm

CSS08 DMCC

401-403

4:41 pm – 4:48 pm

CSS09 REPRO, RESQI

401

PAPER PRESENTATION – Group #5

Work Smarter, Not Harder: Leveraging the Cerner EMR and Use of Dynamic Worklist to Improve the Quality of Your QI Projects

Sarah Davis MD, BS

Methodology of Using Cleveland Clinic MyChart to Query, Distribute, and Implement a Cross-Sectional Survey

Rei Kola BS, MS, Joe Mandato BS, Robert Bales MD, MPH, FAAFP

Social Determinants and ICD-10 Codes

Crystal Marquez MD, Tonya Taylor PhD

Text Based Care, New Normal Modern Primary Care, Analysis of Data from an Urban Inner-City Population

Eric Kim MD, PhD, Jaividhya Dasarathy MD

CLINICAL SUCCESS STORIES – Group #1

Barriers and Lessons Learned in Caring for a Homeless Transgender Teenager Living with HIV and Seeking Asylum

Victor Sta. Ana MD, MEd, FAAFP, Katharine Mackel LCSW

Lessons from a Dying Man

Stacey Robert MD

Orange Pineapple Dream

Kristina Zimmerman MD

Reflections on Race and Medicine Curriculum Win

David Yuan MD, MS

Diabetes Wellness Event for At Risk Males in an Urban Setting

Bridget Peters DO, Jamie Rapacciuolo DO

East Meets West! A Prescription for Wellness for Busy Physicians

Rowena D. Pingul-Ravano MD, Jacqueline Denisse Pingul

DVT in Setting of Acute ACL Injury

Lidiya Didenko MD, Brett Keller DO, Kenneth Ly MD, Padmani Doobay MD, Abigail Colasacco MD

Delayed Diagnosis of IgA Vasculitis in a Patient with DiGeorge Syndrome

Alisha Gupta MD

Miscarriage

Owen Sisbarro MD, Marguerite Duane MD

4:45 pm – 5:30 pm

Pre-function 4th Floor

5:30 pm – 7:00 pm

Grand Ballroom 5th Floor

5:30 pm – 7:00 pm

Grand Ballroom 5th Floor

Evening Break: Please Visit Our Exhibitors

Plenary Dinner

Pamela Vnenchak MD, FMEC President-elect

Awards Presentations

First Place Prose

Stacey Robert MD

WellSpan York Hospital Family Medicine Residency

"The Seasons of Life"

Second Place Prose (tie)

Hugh Silk MD, MPH

Department of Family Medicine and Community Health

University of Massachusetts Chan Medical School

"Letter to Myself on my First Day After Residency"

Najya A. Williams MSIV

Lewis Katz School of Medicine at Temple University

"Code T"

Third Place Prose

Tshering Sherpa DO

Phelps Family Medicine Residency Program

"Unveiling a layer of Global Health: Exploring Flaws and Benefits Through Narrative Medicine"

First Place Poetry

Srijesa Khasnabish

University of Massachusetts Medical Center

Fitchburg Family Practice

"No Time for Loss"

Second Place Poetry

Mary Rose Puthiyamadam MD

Phelps Family Medicine Residency

"Doctor Daughter"

This We Believe Award:

Sandy Wang

University of Rochester

"I Believe Patients are People"

5:30 pm – 7:00 pm

Grand Ballroom 5th Floor

Plenary Speaker

Five Lessons From a Patient on Matters of Life and Death

Jim Zervanos,

Author of *That Time I Got Cancer: A Love Story; Your Story Starts Here:*

A Year on the Brink with Generation Z; LOVE Park; American Gyro

Nikitas Zervanos MD

FMEC founding member

7:00 pm – 9:00 pm

Franklin Hall A

Residency Fair with Coffee and Dessert served

9:00 pm – 10:00 pm

Franklin Hall 7

NYSAFP Reception

SATURDAY, SEPT. 21, 2024

7:00 am – 5:00 pm

3rd Floor Foyer by 309

Registration

7:00 am – 8:00 am

Grand Ballroom 5th Floor

Breakfast Table Discussions

(See pages 52-53)

7:00 am – 8:00 am

401-403

PAFP Program Directors Meeting

7:00 am – 8:30 am

Grand Ballroom 5th Floor Foyer

Continental Buffet Breakfast Served

8:00 am – 2:30 pm

Pre-function 4th Floor

Exhibitor Booth Hours: Please Visit Our Exhibitors

10:15 am – 12:00 pm

Headhouse Tower Liberty Ballroom

Poster Set-up

Saturday 8:00 am – 9:00 am **WORKSHOP – Group #6**

W30 OSTEOPATHIC

Franklin Hall 8

Osteopathic Approach to Low Back Pain

Kathleen E Sweeney DO, Jacquelin Fabina DO, Megan Maurer DO, Victoria Devan DO

W31 PRO

Franklin Hall 6

Common Musculoskeletal Injection Techniques in Family Medicine

Joseph Tribuna MD, George Maxted MD, Matthew Resciniti DO

W32 F, R, S

Franklin Hall 7

Bring Your CV! Edit, Collaborate, Self -Reflect to Improve Your CV for Academic Promotion

Jaividhya Dasarathy MD, Christine Alexander MD, Bode Adebambo MD

W33 WELL

502

Practicing Self- Compassion

Maya Bass MD, MA, FAAFP

W34 TECH, R, S

Franklin Hall 9

Learn How to Code Like a Coder

Michelle Nelson MD, FAAFP

Saturday 8:00 am – 9:00 am **SEMINAR – Group #6**

S33 TECH

Franklin Hall 10

Navigating the Landscape of Internet Use Disorders in the Primary Care Setting: Digital Dilemmas

Joseph Mandato BS, Robert Bales MD, MPH, FAAFP

S34 F, R, ACGME

Franklin Hall 11

Forming Meaningful Mentor/Mentee Relationships

Megan Rigotti DO, Suganya Mahinthan MD

S35 F, R, S

408-409

Verbal and Nonverbal Communication: A Global Endeavor

Yasmine Mourad DO

S36 F, R, S

404

How to Get Your Feet Wet Writing: Opportunities for Writing a Descriptive Review

Karl Clebak MD, MHA, FAAFP, Michael Partin MD, Megan Mendez-Miller DO, Sarah Ramirez MD, Christina Scartozzi DO

S37 S

406

A Perfect Match

Melissa Arthur Ph.D, Melissa Tribuiani MD, Stephen Hoag MD

S38 REPRO, MCH

407

Family Planning: There's an App for That?

Katelyn Bradley MD, Marguerite Duane MD, MH, MSPH, FAAFP, Conor Bradley MD

S39 R, S

405

The Incomplete List of Things You Can Do In Family Medicine

Gregory Dobash MD, FAAFP, FAWM, FASAM

Saturday 8:00 am – 9:00 am RESEARCH PAPER PRESENTATION – Group #6

8:00 am – 8:30 am
RP11 F, MH, RESQI
414

Implementation and Evaluation of an Integrated Behavioral Health (IBH) Curriculum within a Third Year Family Medicine Clerkship
Catherine Guariglia MD

8:30 am – 9:00 am
RP12 MCH, RESQI
414

Does Offering Pap Smear Self-Collection Increase Cervical Cancer Screening Appointment Attendance?
Tonie McKenzie MD, Ariel Jacobs MPH, Saskia Shuman MHS, Susan Rubin MD, MPH

Saturday 8:00 am – 9:00 am LECTURE DISCUSSION – Group #16

8:00 am – 8:20 am
LD47 S
410

A How-To Session for Medical Students: Establishing a New PHRC and Adjacent Curriculum at a Medical School
Elana Cohen BA, BFA, Olga Pinkhasov BS, Megan Menard BS

8:20 am – 8:40 am
LD48 F, R
410

Yet Another Journal Club? Reinvigorating Resident Education by Redesigning a Journal Club Curriculum
Henrique Jaime MD

8:40 am – 9:00 am
LD49 F, POCUS
410

Getting a POCUS Curriculum Off the Ground
Stacey Robert MD, Ryan Stolakis MD, Julian Antal DO

Saturday 8:00 am – 9:00 am LECTURE DISCUSSION – Group #17

8:00 am – 8:20 am
LD50 DMCC
411

Tick-Borne Illness: Lyme Disease
Nicholas Hajj MD

8:20 am – 8:40 am
LD51 DMCC
411

Dear Crohn's, I Hate Your Guts!
Lauren Strohm DO, Ashley Labdik MD, Astrid Rosario Riollano MD, Ana Tegtmeier MD

8:40 am – 9:00 am
LD52 F, R, S
411

What's in a Name: Unbelievable Stories Behind the Name
Sriya Vontela BA, Michael Flanagan MD

Saturday 8:00 am – 9:00 am LECTURE DISCUSSION – Group #18

8:00 am – 8:20 am
LD53 MCH
415

Breastfeeding Basics for the Family Physician
Heather Speck DO, MPH, CLC

8:40 am – 9:00 am
LD55 MCH, CE
415

Fostering Community-Based and Interdisciplinary Care: Involving Family Medicine Residents in Postpartum Home Visit Services
Marissa Stabile DO, Danielle Carcia DO

Saturday 8:00 am – 9:00 am PAPER PRESENTATION – Group #6

8:00 am – 8:15 am
Paper21 MH, RESQI
413

A Stand-Alone Principles of Behavioral Health Rotation for PGY1 Residents
Anthony Brine PsyD, Lisa Weiss MD, MEd, FAAFP

8:15 am – 8:30 am
Paper22 MH, RESQI
413

Breaking the Silence: Teen Suicide Prevention in Office Settings
Antoinette Abou Haidar MD, Paula Jones DO, Gina Silberman DO

8:30 am – 8:45 am
Paper23 MH, RESQI
413

8:45 am – 9:00 am
Paper24 MCH, CE
413

Saturday 9:15 am – 10:15 am

W35 OSTEOP
Franklin Hall 8

W36 PRO
Franklin Hall 6

W37 F, R
405

W38 PRO, REPRO
Franklin Hall 7

W39 PRO, INN
Franklin Hall 9

Saturday 9:15 am – 10:15 am

S40 DEI, DMCC
Franklin Hall 10

S41 DMCC
Franklin Hall 11

S42 F, R, WELL
Franklin Hall 12

S43 ADV
404

S44 DMCC, IH
406

S45 REPRO
407

S57 SDOH
412

Saturday 9:15 am – 10:15 am

9:15 am – 9:45 am
RP13 REPRO, RESQI
414

9:45 am – 10:15 am
RP14 REPRO, RESQI
414

Increasing Bipolar Disorder Screening in a Family Medicine Residency Clinic
Joshua Snyder DO, Ana Tovar PhD

You Don't Have to Go Home But You Can't Stay Here: Switching to Short-Term Counseling
Calvin Brown LCSW-R, CASAC, Sarah Eaton LCSW-R

WORKSHOP – Group #7

OMT for Common Upper and Lower Extremity Cases
Christina Scartozzi DO, Roland Newman DO, Anne Darby DO

Suturing 101
Nicholas Hajj MD

Mastering the Match: A Strategic Workshop for Residency Interviews
Karl Clebak MD, MHA, FAAFP, Michael Partin MD, Roland Newman DO, Sofia Perez Delgado DO, Harrison Eckert DO

IUD Workshop
Cresandra Corbin MD, Dianna Bonaccorsi DO

Improving Code Team Performance: Rapid Cycle Deliberate Practice
Rebecca Shipkin MD, MPH, Marissa Stabile DO, Paul Morer BS

SEMINAR – Group #7

Gender Affirming Medical Therapy
Bianca d'Antonio-Bertagnolli MD, MPH

The Highs and Lows of Gestational Diabetes
Samantha Sostorecz DO, Brynne Brouse DO, Nora McGinley-Hence MD

Managing Perfectionism in Medicine
Adam Bradley MM, Molly Stegman MS3, Blaise O'Malley, MPH, MS3

Primary Care for All Americans: A National Movement to Build a Primary Care Driven System
Laurence Bauer MSW, MEd, Michael Fine MD

Exercise as Medicine Patient Education in Family Medicine Office Visits
Susan Fidler MD, Michael Devano DO, Bradley Rivotto DO

Medication Abortion: It's Easier Than Diabetes Management!
Ksenia Varlyguina MPH, Heather Paladine MD, MEd, FAAFP, Maya Bass MD, MA, FAAFP

Methods to Address Patient Risk for Gun-Related Violence in a Family Physician Office Setting
John Boll DO, FAAFP, Taylor Rider DO

RESEARCH PAPER PRESENTATION – Group #7

Providing Clinicians Remote Point of Care Clinical Support Around Early Pregnancy Complications Management Across a Large FQHC Network
Susan Rubin MD, MPH, Caitlin Weber MD, MS, Margaret Glusser MD, Samantha Glass MD

The Group Care Maternity Model to Achieve Healthy Weight
Taru Sinha MD

Saturday 9:15 am – 10:15 am LECTURE DISCUSSION – Group #19

9:15 am – 9:35am

LD56 F, ACGME

410

Milestone Champions: A Framework for Faculty Coaches to Assist the Struggling Learner

Raghda Bchech MD, AAHIVS, Kaitlin O'Malley MD MPH, Janet Cruz MD

9:35am – 9:55am

LD57 SDOH, CE, NT

410

Designing a Data Collection System for the Plainville Community Food Pantry

Patrick Smith MD

9:55am – 10:15 am

LD58 F, ACGME

410

Optimizing Residency Curriculum with Tik-Tok-Style Clinical Pearls

Kristen Wong MD, Charles Hackett MD

Saturday 9:15 am – 10:15 am LECTURE DISCUSSION – Group #20

9:15 am – 9:35am

LD59 DEI, F

411

Kaleidoscope: A Justice, Equity, Diversity, and Inclusion Curriculum in a Community-Based Family Medicine Residency

Tejal Patel DO, Ashley Cremona-Simmons MS, DO

9:35am – 9:55am

LD60 DEI, F

411

Population Health Approaches to Health Equity

Kristina Laguerre MD, MPH, Renee Betancourt MD

9:55am – 10:15 am

LD61 DEI

411

Strength Based Interviewing for LGBTQ+ Health and Beyond

Chloe Chaudhury MD, MPH, Victoria Ngo MD

Saturday 9:15 am – 10:15 am LECTURE DISCUSSION – Group #21

9:15 am – 9:35am

LD62 RM

415

50 Years of the Rural Physician Shortage Area Program: Lessons Learned and Student Reflections

Robert Motley MD, MHCDS, Spencer Dimon MS2, Brittany Hornberger MS3, Thomas Starr MS3, Gillian Love MD

9:35am – 9:55am

LD63 RM, F

Revitalizing Medical Education: A Prescription for Enhancing Rural Health in America

Zachary White MS, Hillary Mount MD 415

9:55am – 10:15 am

LD64 RM, F

415

An Urban Rural Connection: FMOB Away Rotation at a Critical Access Hospital

Jennifer Cohn MD, Samir El-Sawaf MD, Melissa Donze MPH, Mario DeMarco MD, MPH

Saturday 9:15 am – 10:15 am PAPER PRESENTATION – Group #7

9:15 am – 9:30 am

Paper25 RESQI

413

Impact of Rapid Response Workshop on Interns Confidence and Performance In Residency

Henika Kaura MD, Nasir Alhamdan MD

9:30 am – 9:45 am

Paper26 POCUS, RESQI

413

Piloting A Point Of Care Ultrasound Curriculum At Your Residency

Suganya Mahinthan MD, Katherine Holmes MD

9:45 am – 10:00 am

Paper27 RM, RESQI

413

Evaluating the Self-Efficacy of Family Medicine Residents in Performing Rural Health Skills: A Three-Year Matched Paired Analysis of Self-Reported Confidence Levels

Brian Beauregard MBA, MPP, Fadya El Rayess MD, MPH, Roberta Goldman PhD, Daria Szkwardo DO, MPH

10:00 am – 10:15 am

Paper28 F, ACGME, RESQI

413

Elevating Medical Education through the Experience Month

Danielle Carcia DO, Marissa Stabile DO

Saturday 10:15 am – 11:00 am Morning Break

Pre-function 4th Floor

Saturday 10:15 am – 12:00 am Poster Set Up: Headhouse Tower

Headhouse Tower

See Poster Session 1 List on Page 55

See Poster Session 2 List on Page 59

Saturday 11:00 am – 12:00 pm WORKSHOP – Group #8

W40 OSTEO

Franklin Hall 8

Caring for the Menopausal Patient: Medical, Osteopathic and Integrative Medicine Perspectives

Michaela Lei DO, Monica Meyer MD, Felicia Raju DO, Laura Ruhl MD

W41 PRO

Franklin Hall 6

Family Medicine in the Wild: Practical Skills Session

Jerome Pomeranz MD, Lauren Nadkarni MD

W42 F, R, S

Franklin Hall 7

Paso a Paso: Start Your Journey into Medical Spanish ¿Cómo se dice?

Rebecca Nguyen MD

W43 ART, DEI

401-403

Addressing Systemic Racism In Healthcare Through Storytelling and Community Dialogue

Ellen Tattelman MD, Tanya White-Davis PsyD, Ekua Ansah-Samuels MPH, Heather Archer-Dyer MPH, CHES, Kawther Coppin BS

W44 ART

Franklin Hall 9

The Promise and Challenge of Reflective Writing

Paul Gross MD, Jonathan Han MD

Saturday 11:00 am – 12:00 pm SEMINAR – Group #8

S46 REPRO, MCH

Franklin Hall 10

Dedicated to the Dyad

Jenna Dafgek MD, Shaunna Escobar MD, MPH, FAAFP, Leah Gregorio MD, FAAP, Christina Shenko MD, FAAFP, DipABLM

S47 ADV, INN

Franklin Hall 11

Transformation to an Advanced Primary Care Model of Care: Helping America to Achieve the Quintuple Aim Of Healthcare

Alan Roth DO, Luigi G. Tullo MD, FAAFP

S48 IH

408-409

Using Whole Person Health to Decrease Inequities and Improve Wellness

Andrea Gordon MD, Elena Rosenbaum MD

S49 REPRO

404

Preeclampsia

Karthikeyan Swaminath MD

S50 ADSU, DMCC

406

Overview of Stimulant Use Disorder

Kate Kelley MD, MPH

S51 MCH

407

How to “Spark” Positive Parenting, Early Relational Health and Child Development in Primary Care and Medical Education

Elizabeth Loomis MD

Saturday 11:00 am – 12:00 pm RESEARCH PAPER PRESENTATION – Group #8

11:00 am – 11:30 am

RP15 DMCC, RESQI

414

Optimizing Antihyperglycemic Regimens for Patients with Type 2 Diabetes Managed by Primary Care and Collaboration with Endocrinology

Sufyan Ahmad DO, Tasha Kouvatso MD, Dalea Al-Hawarri MD

11:30 am – 12:00 pm

RP16 TECH, RESQI

414

Using Smart Phrases to Improve Outcomes for Diabetic Patients

Jessica Solis MD, MBA

Saturday 11:00 am – 12:00 pm LECTURE DISCUSSION – Group #22

11:00 am – 11:20 am

LD65 SDOH, ADV

410

Food Insecurity and Climate Change

Katherine Holmes MD, Ruchi Parikh MD, Sabba Sarwar MD, Peter Yang MD,

Kathryn Skolnick MD

11:20 am – 11:40 am

LD66 F

410

Charting New Paths: Exploring a Pilot Longitudinal Integrated Clerkship (LIC)

Brent Bostater BS, Megan Fainer MPH, BS, Michael Appleman MAED, BA, Elizabeth Clary

11:40 am – 12:00 pm

LD67 F, ACGME

410

Catch Me When You Can: The Millennial Way of Learning

Renata Carneiro PhD, Judy Abu-Brown MD, Nguyet Cam V Lam MD, Kati Yext DO,

Rana Rasan Moawad BS

Saturday 11:00 am – 12:00 pm LECTURE DISCUSSION – Group #23

11:00 am – 11:20 am

LD68 MCH

411

Maternity Management When You Least Expect It

Laura Sturgill MD, MED

11:20 am – 11:40 am

LD69 MCH

411

It Takes a Village To Improve Early Postpartum Visit Attendance

Noopur Doshi MD, Sukanya Srinivasan MD, MPH, Carolyn Kirby MPH, Tarama Gale

11:40 am – 12:00 pm

LD70 MCH

411

Supporting Lactation in Hospitalized Patients

Jessica Quinn MD, Esha Mehta MD, MPH, Joi Spaulding MD, MS,

Caitlin Weber MD, MS, FAAFP, IBCLC, Mindy Brittner MD, MS, FAAFP

Saturday 11:00 am – 12:00 pm LECTURE DISCUSSION – Group #24

11:00 am – 11:20 am

LD71 OSTEO

415

Post Breast Cancer-Related Lymphedema OMT Workshop

Brynne Brouse DO, Samantha Sostorecz DO, Abby Rhoads DO

11:20 am – 11:40 am

LD72 OSTEO

415

Multifaceted Approach to Back Pain

Philip Cruz DO

11:40 am – 12:00 pm

LD73 OSTEO

415

Unlocking the Healing Potential: Exploring Osteopathic Care for Sports Concussions

Vikrant Dhindsa DO, Elizabeth Raleigh DO

Saturday 11:00 am – 12:00 pm PAPER PRESENTATION – Group #8

11:00 am – 11:15 am

Paper29 F, ACGME, RESQI

413

Teaching “When Less is More”

Rachel Rosenberg MD, Pooja Padgaonkar MD

11:15 am – 11:30 am

Paper30 MCH, RESQI

413

Enhancing Pediatric Literacy Through Reach Out and Read

Danielle Carcia DO, Alyssa Brunstein, Cecilia Baradhi DO, Ashley Lovenduski DO

11:30 am – 11:45 am

Paper31 DEI, F, RESQI

413

D.U.I: Teaching Family Medicine Residents Cultural Sensitivity

Renata Carneiro PhD, Ndhi Kushee-Kumar MD, Crystal Lovelace MD

11:45 am – 12:00 pm

Paper32 SDOH, RESQI

413

Social Determinants of Health Inpatient Rounds

Hillary Mount MD, Somu Chatterjee MD

Saturday 11:00 am – 12:00 pm PAPER PRESENTATION – Group #9

11:00 am – 11:15 am
Paper33 DMCC, RESQI
412

Continuous Glucose Monitoring: How to Interpret and Manage Data
Hemalatha Senthilkumar MD, Jasmine Ortiz

11:15 am – 11:30 am
Paper34 GER, F, RESQI
412

A Palliative Skills Workshop for 3rd and 4th Medical Students
Kathleen Mechler MD, Gillian Love MD, Holden Caplan MS4, Colleen Graham DO

11:30 am – 11:45 am
Paper35 F, RESQI
412

Join Our Journey: The Switch to Star Community Health
Daisy Zhang MD, Nandhini Veeraraghavan MD, Kaycie Van Driel DO

11:45 am – 12:00 pm
Paper36 F, S, RESQI
412

SOAPing for Superstars
Michelle Nelson MD, FFAFP, Oskar Milik PhD

12:00 pm – 12:15 pm
Paper37 F, RESQI
412

Primary Care Experience: Preparing Residents for Outpatient Family Medicine
Michael Samaan MD

Saturday 11:00 am – 12:00 pm SPEED PRESENTATIONS – Group #1

11:00 am – 11:05 am
SPO1 REPRO, F
405

A Resident Elective for Family Planning and Women's Health
Marguerite Duane MD, MHA, MSPH, FFAFP, Kate Bradley MD

11:05 am – 11:10 am
SPO2 DMCC
405

Bannwarth Syndrome, Masquerading as MS
Reina Qu DO

11:10 am – 11:15 am
SPO3 SDOH, MCH
405

Breastfeeding in Homeless Healthcare Settings
Megan Braiman MD, Mursell Khairzada DO, Rubina Bhura DO

11:15 am – 11:20 am
SPO4 R
405

Comfort in Clinic: Outpatient Based Rotation for Interns
Samantha Rai MD

11:20 am – 11:25 am
SPO5 ART
405

Crafting Your Narrative
Elise Gruber MD

11:25am – 11:30 am
SPO6 DMCC
405

Doxycycline Post-Exposure Prophylaxis
Brianna Michael MD

11:30 am – 11:35 am
SPO7 ADV
405

Earth Rx: Prescribing Planetary Health for Patient Health
Samyukta Karthik MPhil, BS, Michael McShane MD, EdM

11:35am – 11:40 am
SPO8 PRO, F
405

Enhancing Medical Students' Suturing Skills and Confidence Through Video-Assisted, Workshop-Based Learning
Sumira Koirala MD, Lisa Weiss MD

11:40 am – 11:45 am
SPO9 MH, IH
405

Expanding Behavioral Health Consultations for Health Issues in Integrated Care
Alan Schwartz PsyD, Matthew Holden LCSW, Bernie Herlyn PsyD

11:45 am – 11:50 am

SP10 MH, NT
405

From Disorderly Eating to Eating Disorder: What is the Role of Family Physicians?

Renata Carneiro PhD, Oceana Hopkins MD

11:50 am – 11:55 am

SP11 GER, F
405

Geriatrics Education for Family Medicine Residents: Teaching Future PCPs to Care for Older Adults Across Settings

Carolyn Sciblo MD

12:00 pm – 2:30 pm

Pre-function 4th Floor

Boxed Lunches Served

12:00 pm – 1:10 pm

Headhouse Tower

Poster Session 1

(See list on page 55)

12:00 pm – 1:10 pm

Franklin Hall 7

Clinical Camp Tables Session 1

(See list on page 54)

12:30 pm – 1:30 pm

412

Integrative Health Learning and Teaching Network

Elena Rosenbaum MD

12:30 pm – 1:30 pm

Franklin Hall 9

Faculty Development Committee

Gretchen Shelsky MD

12:30 pm – 1:30 pm

Franklin Hall 10

Residency Program Coordinator/Administrator Group

Annette Sheets

1:20 pm – 2:30 pm

Headhouse Tower

Poster Session 2

(See list on page 59)

1:20 pm – 2:30 pm

Franklin Hall 8

Clinical Camp Tables Session 2

(See list on page 54)

Saturday 2:30 pm – 3:30 pm WORKSHOP – Group #9

W45 OSTEOPATHY

Franklin Hall 8

OMT for Headaches: The Hands-On Approach to Treat a Common Presentation for Practitioners of All Skill Levels

Theresa Yurkonis DO, MHSA, Clayton Vasey DO, Forum Sanghavi DO, MHSA, Christina Scartozzi DO, Kathleen Sweeney DO, Jefferson Adams DO, William Olstein DO, Megan Maurer DO

W46 OSTEOPATHY

Franklin Hall 6

Baby Got Back (Pain): Osteopathic Manipulative Techniques for Pregnant Patients

Elizabeth Ta DO, Heather Speck DO, MPH, Jessica Gale DO, Christina Shenko MD, Ana Garcia DO

W47 PRO

Franklin Hall 7

Splinting on the Fly: Treatment of Acute Musculoskeletal Injuries in the Field

Corey Costanzo DO, MPH, MS, Brennan Dagle MD, Matthew Morrow DO, Sandra Augusto MD, MPH, Kristina Gracey MD, MPH

W48 PRO

Franklin Hall 9

Contemporary Medical Acupuncture: Evidence and Application

David Berdy MD, CPE

W49 F, ACGME

401-403

Microaggressions in The Learning Environment

Katherine Holmes MD, Suganya Mahinthan MD

W50 F, R, S

Franklin Hall 10

Leading as You Learn: Leadership Skills for Clerkships and Beyond

Andrew Lutzkanin MD, FAAFP

Saturday 2:30 pm – 3:30 pm SEMINAR – Group #9

S52 F, R
Franklin Hall 11

EBM as Ethics Based Medicine. These are the NNKs (Numbers Needed to Know)
Hugh Blumenfeld MD, PhD, Catriona Hong BS, Zaenia Jeffrey MD

S53 F, S, NT
408-409

Utilizing Case-Based Learning to Enhance Knowledge of Nutritional Counseling and Motivational Interviewing among Medical Students
Lekha Patel MS, BS, Fredrick Birnbaum BA, Joya Ahmed BA, Kelly Veerasammy BS, Crystal Marquez MD

S54 NT, IH
404

Spicy Chaat: South Asian Cuisine and its Effects on Cardiovascular Health, Can a Healthier Samosa lead to a Healthier Heart?
Nirali Patel DO, MS, Dipesh Patel DO, Tejal Desai DO

S55 RM, PTSIP, WELL
406

The Joy of Rural Medicine: Family Recipe for a Fulfilling Career Caring for Rural Communities
Amanda Vaglia DO, John Boll DO, FAFAP, Greg Dobash MD, FAFAP, Molly Talley

S56 ADSU
407

Reimagining the Hospital Care Environment for People who Inject Drugs
Kathleen Mechler MD, Jillian Zavodnick MD, Helene Dailey DNP, Natalina Contoreggi MD, Rebecca Jaffe

S03 DMCC
412

Hereditary Cancer Risk Assessment in Primary Care: Barriers and Solutions
Elise Laflamme MD, Ina Bodinaku MD, Leah Genn MD, Catherine Henckel MD, Brenda Navarro-Galindo MD

Saturday 2:30 pm – 3:30 pm RESEARCH PAPER PRESENTATION – Group #9

2:30 pm – 3:00 pm
RP17 RESQI
414

A Systematic Effort to Improve Quality Metrics in a Residency Clinic
Andrew Dixon MD

3:00 pm – 3:30 pm
RP18 ACGME, RESQI
414

Improving the Process of Evaluation for Clinical Competency Among Family Medicine Residents in Rapid Response Scenarios
Jillian Weinfeld MD, Tarun Kakumanu DO, Kenneth Kronhaus MD, Kelly Ussery-Kronhaus MD

Saturday 2:30 pm – 3:30 pm LECTURE DISCUSSION – Group #25

2:30 pm – 2:50 pm
LD74 ADV, ACGME
410

Climate Change and Health: Our Future as Family Physicians
Nadine Najah BA, Trina Swanson AB, Emily Wang BA, Reed Junkin BA, Zach Burns DO

2:50 pm – 3:10pm
LD75 GH, S
410

Approaching Immigrant Health Education Through the Lens of a Student
Molly Stegman BS, Katrina Bakhl BS, Samyukta Karthik BS, MS, Madalyn Fernbach BS, Jonathan Nunez MD

Saturday 2:30 pm – 3:30 pm LECTURE DISCUSSION – Group #26

2:30 pm – 2:50 pm
LD77 SDOH, F
411

From Pre-Health to Fellowship: Homeless Healthcare Education Across the Family Medicine Training Spectrum
Sandhya Kumar MD MPH, Roshan Bransden MD, Megan Braiman MD, Andreas Lazaris MD, MSc

2:50 pm – 3:10pm
LD78 F, TECH, ACGME
411

Capturing the Continuity Data
Timothy Heilmann MD, MHA, Joshua Dearing MD

3:10 pm – 3:30 pm
LD79 SDOH, CE
411

From Shelter to Stability: Fostering Family Medicine Continuity Through Community-Centered Care
Marissa Stabile DO, Danielle Carcia DO, Linda Sichel RN

Saturday 2:30 pm – 3:30 pm PAPER PRESENTATION – Group #10

2:45 pm – 3:00 pm

Paper38 F, RESQI
413

Sports Medicine Rotation Keys to Success

Emily Eshleman DO, MS, CAQSM, Lee Mancini MD, CAQSM, FAAFP, CSCS*D, CSN, Faith Mancini

3:00 pm – 3:15 pm

Paper39 IH, RESQI
413

Resident-Led Nutrition Consultations: An Innovative Lifestyle Medicine Elective Experience

Keri Rosen DO, MSc, Sarah Morchen MD

Saturday 2:30 pm – 3:30 pm PAPER PRESENTATION – Group #11

2:30 pm – 2:45 pm

Paper40 DMCC, RESQI
415

“BRCA The Brave”: Implementation of a Hereditary Breast Cancer Screening Quality Improvement Project

Jaclyn Natalone DO, Lindsay Heiple DO, Vikram Arora MD

2:45 pm – 3:00 pm

Paper41 DMCC, RESQI
415

Primary Care Physician Referral Practices Regarding BRCA1/2 Genetic Counseling in a Major Health System

Laura Lipold MD, Kathryn Martinez PhD, Ryan Noss, Michael Rothberg MD, Elizabeth Pfoh PhD

3:00 pm – 3:15 pm

Paper42 F, RESQI
415

OSA: Updates on Screening and Management

Hemalatha Senthilkumar MD, Jaividhya Dasarathy MD

3:15 pm – 3:30 pm

Paper43 DMCC, RESQI
415

Family Medicine Residents’ Understanding of and Attitudes Towards Medical Aid in Dying (MAiD)

Sachi Desai DO, Anjali Sivendra MD

Saturday 2:30 pm – 3:30 pm SPEED PRESENTATIONS – Group #2

2:30 pm – 2:35 pm

SP12 DMCC
405

IgA-Dominant Staphylococcus-Associated Glomerulonephritis: An Uncommon Complication of Intravenous Drug Use

Mason Stoltzfus MD, Pankhuri Mohan MD, Jinpyo Hong BS, Robert Mullin DO

2:35 pm – 2:40 pm

SP13 DMCC, TECH
405

Navigating the Effectiveness and Equity of Telemedicine

Shruthi Thiagarajan BA, Tyler Sarich BA

2:40 pm – 2:45 pm

SP14 POCUS
405

Practical Implementation of Point-of-Care Ultrasound for a Full-Spectrum Family Physician

Henry Del Rosario MD

2:45 pm – 2:50 pm

SP15 REPRO
405

Provider and Community Views: The Impact of the Dobbs Ruling on Menstrual Healthcare

Olivia Rea BS, Allison Casola PhD, MPH, MCHES, Jacqueline Nguyen BA

2:50 pm – 2:55 pm

SP16 RESQI
405

Quality Improvement: Improving No-Show Rates at an FQHC

Mary Tabakin DO, George Sandya DO

2:55 pm – 3:00 pm

SP17 F, S
405

Reflection from Mentor/Mentee on Research in Medical School

Allison Casola PhD, MPH, MCHES, Olivia Rea BS

3:00 pm – 3:05 pm

SP18 PTSIP
405

Seeking Collaboration in the Speciality Group

Donald Pine MD

3:05 pm – 3:10 pm

SP19 SDOH
405

Street Medicine: Meeting Patients Where They Are

Kristina Ramdial MD, MPH, Kathleen Bannerman MD

3:10 pm – 3:15 pm

SP20 DMCC
405

The Elderly, Sniffly, and a Little Whacky: Consider RSV Encephalitis

Lubna Farooqui MD

3:15 pm – 3:20 pm
SP21 DMCC
405

Xylazine: Identifying Risks, Managing Sequelae, and Reducing Harm
Andreas Lazaris MD, MSc, Sandhya Kumar MD, MPH

3:45 pm – 4:45 pm
Pre-function 4th Floor

Afternoon Break: Please Visit Our Exhibitors

3:45 pm – 4:45 pm
Grand Ballroom 5th Floor

Closing Plenary and Awards

Leon McCrea II MD, MPH, FMEC President
Heather Paladine MD, MEd, FAAFP, FMEC Treasurer-Secretary

Award Presentations

Family Physicians Changing Our World Award

John N. Boll, Jr. DO, FAAFP

UPMC Rural Family Medicine Residency

UPMC Williamsport Family Medicine Residency

This We Believe Award

Carla Jardim MD

Hunterdon Family Medicine Residency –
“The Value of Things Not Measured”

3:45 pm – 4:45 pm
Grand Ballroom 5th Floor

Plenary Speaker

The Art of ‘Unlearning’ to Advance Health Equity: The PurPLE Health Story

Anita Ravi MD, MPH, MSHP, FAAFP

President, CEO, Co-Founder, Founding Board Member, PurPLE Health Foundation

Residency Fair

4:45 pm – 6:45 pm
Franklin Hall A

7:00 pm – 8:00 pm
Franklin Hall A

Residency Fair Booth Breakdown



2024 FACTS VIRTUAL CONFERENCE

Register by **September 1st** for Early Bird Pricing!



Bringing **leading experts** in women's healthcare and diverse approaches to *timely topics* in women's health:

Featured Topics:

- FemTech + Data Privacy
- Infertility
- Dysmenorrhea
- Irregular Cycles
- Recurrent Miscarriage
- and more...

- **Kristina Pakiz, MD**
- **Thomas Bouchard, MD**
- **Pilar Vigil, MD**
- **Phil Boyle, MD**
- **Lauren Rubal, MD**
- **Marguerite Duane, MD**

Plus, check out our pre-conference CME package!

FRIDAY - SATURDAY | 100% VIRTUAL

OCT 18-19

REGISTER NOW!

FACTS Members Save 20%

 FACTSaboutFertility.org



2024 FMEC Partners

*As of August 16, 2024

PRESIDENT LEVEL

UPMC Life Changing Medicine
UPMC Altoona Family Medicine Residency
UPMC Harrisburg Family Medicine Residency
UPMC Horizon Family Medicine Residency
UPMC Lititz Family Medicine Residency
UPMC McKeesport Family Medicine Residency Program
UPMC Rural Family Medicine Residency
UPMC Shadyside Family Medicine Residency Program
UPMC St. Margaret Family Medicine Residency Program
UPMC Washington
UPMC Williamsport Family Medicine Residency

PLATINUM

Allegheny Health Network (AHN) / Highmark
Forbes Family Medicine Residency Program
Saint Vincent Family Medicine Residency Program
Lake Erie College of Osteopathic Medicine
Atlantic Health System
Morristown Medical Center Program
Overlook Medical Center Family Medicine Residency
MetroHealth Medical Center
Case Western Reserve University School of Medicine
MetroHealth Medical Center Family Medicine Residency
St. Luke's University Health Network
St. Luke's University Health Network FMR – Anderson
St. Luke's University Health Network FMR – Bethlehem
St. Luke's University Health Network FMR – Miners
St. Luke's University Health Network FMR – Sacred Heart
St. Luke's University Health Network FMR – Warren
Thomas Jefferson University/Jefferson Health
Abington Family Medicine Residency Program
Albert Einstein Healthcare Network Program
Albert Einstein Healthcare Network/Einstein Medical Center Montgomery Program
Family Medicine Residency at Thomas Jefferson University
Jefferson Health Northeast Family Medicine Residency
Sidney Kimmel Medical College of Thomas Jefferson University

GOLD

Christiana Care Health System Family Medicine & Emergency Medicine /Family Medicine Residency Program
Christiana Care Health System FMRP
Geisinger
Kistler Family Medicine Residency – Wilkes-Barre
Family Medicine Residency – Lewiston
Geisinger Commonwealth School of Medicine
Global University Systems Canada
Medical University of the Americas
Saba University School of Medicine
St. Matthew's University School of Medicine
Greater Lawrence Family Health Center
Lawrence Family Medicine Residency
HCA Healthcare
Tufts University School of Medicine: Portsmouth Regional Hospital Residency
LewisGale Medical Center Residency
LewisGale Hospital-Montgomery/VCOM Residency
The Institute for Family Health/Icahn School of Medicine at Mount Sinai Department of Family Medicine and Community Health
Harlem Residency in Family Medicine (Mount Sinai Hospital)
Icahn School of Medicine at Mount Sinai Downtown Residency in Urban Family Medicine (Mount Sinai Hospital)
Mid-Hudson Family Medicine Residency Program (Health Alliance of the Hudson Valley)
Jamaica Hospital Medical Center
Albert Einstein College of Medicine
Jamaica Hospital Medical Center Family Medicine Residency Program
Middlesex Family Medicine
Penn Medicine / Lancaster General Health
Lancaster General Hospital Family Medicine Residency
UMass Chan Medical School Department of Family Medicine and Community Health
UMass Chan Fitchburg Family Medicine Residency Program
UMass Chan Worcester Family Medicine Residency Program
WellSpan
WellSpan Chambersburg Hospital FM Residency
WellSpan Good Samaritan Hospital FM Residency
WellSpan York Hospital FM Residency Program

2024 FMEC Partners

*As of August 16, 2024

To support and sustain the important and unique work of the FMEC, the FMEC offers medical schools, residency training programs, and health systems the opportunity to become an FMEC Partner. Partner levels range from \$1,000 to \$25,000 and over and come with benefits such as Residency Fair and registration discounts, free individual memberships for residents and faculty, job and fellowship advertising opportunities, and more.

THANK YOU TO OUR CURRENT PARTNERS!

SILVER

American University of Antigua
Boston Medical Center Department of Family Medicine
Boston University School of Medicine
Cooper University Health Care/Cooper Medical School of Rowan University
Duquesne University College of Osteopathic Medicine
Greenfield Family Medicine Residency Program at Baystate Franklin Medical Center
Highland Family Medicine, University of Rochester Medical Center
University of Rochester Family Medicine Residency Program
University of Rochester School of Medicine and Dentistry
Indiana Regional Medical Center
Meritus Health
Meritus Family Medicine Residency
MedStar Health
MedStar Franklin Square Family Medicine
MedStar Health/Georgetown-Washington Hospital Center Family Medicine Residency Program
Montefiore Medical Center/Albert Einstein College of Medicine-Department of Family & Social Medicine
PennState Health
Phelps Family Medicine Residency Program
Ross University School of Medicine
Saint Francis Family Medicine Residency Program
St. George's University School of Medicine
SUNY Downstate Medical Center
SUNY Downstate College of Medicine
University of Connecticut School of Medicine
University of Vermont Health Network
Larner College of Medicine at the University of Vermont, Department of Family Medicine
UVM Family Medicine Residency
University of Vermont Health Network – Champlain Valley Physicians Hospital Family Medicine Residency

BRONZE

Albany Medical College Department of Family and Community Medicine
Butler Family Medicine Residency (Butler Health System)
Central Maine Medical Center Family Medicine Residency
Cleveland Clinic/Fairview Hospital
Conemaugh Memorial Medical Center Family Medicine Residency
Crozer-Keystone Family Medicine Residency Program
CUNY School of Medicine
Drexel University College of Medicine
Eastern Maine Medical Center Family Medicine Residency
Hackensack Meridian School of Medicine
Heritage Valley Family Medicine Residency Program
Hunterdon Family Medicine Residency Program
Lewis Katz School of Medicine at Temple University
Maine-Dartmouth Family Medicine Residency
McLaren St. Luke's Family Medicine Residency
New York Institute of Technology College of Osteopathic Medicine (NYITCOM)
New York Presbyterian/Columbia Family Medicine Residency Program
Northeast Ohio Medical University (NEOMED)
The Ohio State University College of Medicine
PennState College of Medicine
Philadelphia College of Osteopathic Medicine
Quinnipiac University Frank H. Netter MD School of Medicine Family Medicine Residency Program
Rutgers New Jersey Medical School
Rutgers Robert Wood Johnson Medical School
Stamford Hospital/Columbia University Family Medicine Residency
SUNY Upstate Medical University
Touro College of Osteopathic Medicine
University of New England College of Osteopathic Medicine
Virginia Commonwealth University
West Virginia School of Osteopathic Medicine
The Warren Alpert Medical School of Brown University
Wright State University Boonshoft SOM

Residency Fair Participants

*As of August 16, 2024

Programs are listed alphabetically by state, then alphabetically by organization name.

Booth #	Residency Program Name	City	State	Residency Director
1	ECHN – Eastern Connecticut Health Network Family Medicine Residency Program	Manchester	CT	Remi Mathews MD
2	Middlesex Health Family Medicine	Middletown	CT	Kimberly Legere-Sharples MD, MSMEd, FAAFP
3	Quinnipiac Rural Family Medicine Residency	Bridgeport	CT	Traci Marquis-Eydman MD
4	Stamford Hospital	Stamford	CT	Henry Yoon MD
5	UConn School of Medicine Family Medicine Residency Program	Hartford	CT	Kenia Mansilla-Rivera MD
6	Bayhealth Family Medicine Residency Program	Dover	DE	Angela Debo DO
7	Beebe Healthcare Family Medicine Residency	Millsboro	DE	Joyce Robert MD, FAAFP
8	Christiana Care Health System Family Medicine & Emergency Medicine /Family Medicine Residency Program	Wilmington	DE	Anna Filip MD
9	Saint Francis Hospital, Wilmington DE	Wilmington	DE	Hugh Bonner MD
10	Boston Medical Center Family Medicine Residency	Boston	MA	Suki Tepperberg MD, MPH
11	Greenfield Family Medicine Residency	Greenfield	MA	Chandra Hartman MD
12	Lawrence Family Medicine Residency	Lawrence	MA	Nicholas Weida MD
13	Tufts University Family Medicine Residency Cambridge Health Alliance	Malden	MA	Caitlin D'Agata MD
14	UMass Chan Fitchburg Family Medicine Residency	Fitchburg	MA	Eric Rosenthal DO
15	UMass Chan Worcester Family Medicine Residency Program	Worcester	MA	Ginny Van Duyne MD
16	MedStar Franklin Square Family Medicine Residency	Baltimore	MD	Michael Dwyer MD
17	Meritus Family Medicine Residency Program	Hagerstown	MD	Stacy Ross MD
18	University of Maryland Capital Region Health Family Medicine Residency Program	Largo	MD	Dea Bultman MD, MPH
19	Central Maine Medical Center Family Medicine Residency	Lewiston	ME	Bethany Picker MD
20	Maine-Dartmouth FMR	Augusta	ME	Kathryn Hoffmann DO
21	HCA/Tufts Portsmouth Regional Hospital FMR	Portsmouth	NH	Raj Woolever MD, FAAFP
22	NH Dartmouth Family Medicine Residency at Concord Hospital	Concord	NH	Dom Geffken MD
23	Capital Health Medical Center	Trenton	NJ	Marissa Stabile DO
24	Cooper Family Medicine Residency Program	Camden	NJ	Maya Bass MD
25	HMH Ocean University Medical Center	Brick	NJ	Kelly Ussery-Kronhaus MD FAAFP
26	Hunterdon Family Medicine	Flemington	NJ	Patricia Kroth DO
27	JFK Family Medicine Residency Program	Edison	NJ	Rosa Mendoza MD, MS
28	Overlook Medical Center Family Residency Program	Summit	NJ	Joseph Tribuna MD
29	Rutgers Health/RWJMS at CentraState Medical Center	Freehold	NJ	Maria Ciminelli MD, FAAFP
30	St. Luke's University Health Network – Warren	Phillipsburg	NJ	Nandhini Veeraraghavan MD
31	Virtua Family Medicine Residency	Voorhees	NJ	Mario Maffei MD
32	Albany Medical Center Dept. of Family & Community Medicine	Albany	NY	Neil Mitnick DO
33	Ellis Medicine Family Medicine Residency Program	Schenectady	NY	John Petrillo DO
34	Icahn School of Medicine at Mount Sinai Downtown Residency in Urban Family Medicine	New York,	NY	Radeeb Akhtar MD, MPH, AAHIVS
35	Icahn School of Medicine at Mount Sinai South Nassau Family Medicine Residency Program	Oceanside	NY	Mary Ellis MD

Residency Fair Participants

Booth #	Residency Program Name	City	State	Residency Director
36	Institute for Family Health – Mid-Hudson Family Practice Residency	Kingston	NY	Megan McMullan MD
37	Institute for Family Health Harlem Residency in Family Medicine	New York	NY	Andrea Maritato MD
38	Jamaica Hospital Medical Center	Jamaica	NY	Cameron Nienaber MD
39	Montefiore /Albert Einstein College of Medicine – Family & Social Medicine Residency	Bronx	NY	Joel Bumol MD
40	NY Presbyterian-Columbia Family Medicine Residency Program	New York	NY	Heather Paladine MD
41	Phelps Family Medicine Residency Program	Sleepy Hollow	NY	Rebecca Collins DO
42	Rochester Regional Health	Batavia	NY	Elizabeth Loomis MD
43	Saratoga Hospital Family Medicine Residency Program	Saratoga Springs	NY	Ephraim Back MD, MPH
44	St. Joseph's Hospital Health Center Family Medicine Residency	Syracuse	NY	Stephen Hoag MD
45	SUNY Downstate Health Sciences University Program	Brooklyn	NY	Eve Faber MD
46	United Health Services Hospitals Family Medicine Residency	Johnson City	NY	Katherine Holmes MD
47	University at Buffalo Dept of Family Medicine Residency Program	Buffalo	NY	Robert Macek MD
48	University of Rochester/ Highland Family Medicine Residency Program	Rochester	NY	David Holub MD
49	Upstate Medical University, Family Medicine Residency	Syracuse	NY	R. Eugene Bailey MD
50	Upstate Medical University/Auburn Community Hospital Rural Residency Program	Auburn	NY	Sultan Ripon MD
51	The Christ Hospital/University of Cincinnati Family Medicine Residency	Cincinnati	OH	Megan Rich MD
52	MetroHealth System/Case Western Reserve University Family Medicine Residency	Cleveland	OH	Amber Whited-Watson DO
53	OhioHealth Grant Family Medicine	Columbus	OH	Alysia Herozg MD
54	The Ohio State University Family and Community Health Residency Program	Columbus	OH	Beth Panchal MD
55	Summa Health Family Medicine – Barberton	Barberton	OH	Maria Schiaffino MD
56	Summa Health – Family Medicine Residency – Akron Campus	Akron	OH	Lisa Schroeder MD
57	Allegheny Health Network (AHN) Forbes Family Medicine Residency	Monroeville	PA	Stacey Nickoloff DO
58	Allegheny Health Network (AHN) Saint Vincent Family Medicine Residency Program	Erie	PA	Timothy Pelkowski MD, MS, FAAFP
59	Bryn Mawr Hospital Family Medicine Residency	Bryn Mawr	PA	Chrisitne Black DO
60	Chestnut Hill Family Practice- Temple Health	Philadelphia	PA	Andrew Berta MD
61	Conemaugh Family Medicine Residency Program	Johnstown	PA	Jeanne Spencer MD
62	Crozer Health Family Medicine Residency Program	Springfield	PA	William Warning MD
63	Delaware Valley Community Health	Philadelphia	PA	Brent Simmons MD
64	Geisinger Lewistown Family Medicine Residency	Lewistown	PA	Mandy Maneval MD, PhD
65	Heritage Valley Family Medicine Residency Program	Beaver Falls	PA	Vikram Arora MD, MPH, FAAFP
66	IRMC Rural Family Medicine Program	Indiana	PA	Amanda Vaglia DO
67	Jefferson Abington Family Medicine Residency Program	Jenkintown	PA	Susan Kuchera MD
68	Jefferson Einstein Montgomery Family Medicine Residency Program	East Norriton	PA	Arati Karnik MD

Residency Fair Participants

Booth #	Residency Program Name	City	State	Residency Director
69	Jefferson Einstein Philadelphia Hospital	Philadelphia	PA	Nahid Farhat MD, MEd
70	Jefferson Health – Northeast	Philadelphia	PA	Robert Danoff DO, MS, FACOF, FAAFP
71	Jefferson/TJUH Family and Community Medicine Residency Program	Philadelphia	PA	Marc Altshuler MD
72	Latrobe Family Medicine Residency	Latrobe	PA	Michael Semelka DO
73	Lehigh Valley Health Network – Walter and Irene Baran Schuylkill Family Medicine Residency Program	Pottsville	PA	Daniel Pedersen DO
74	Lehigh Valley Health Network Family Medicine Residency	Allentown	PA	Veronica Brohm DO
75	Penn Medicine Lancaster General Hospital Family and Community Medicine Residency Program	lancaster	PA	Pamela Vnenchak MD
76	Penn State Health Family & Community Medicine Residency at Mount Nittany Medical Center	State College	PA	Joseph Wiedemer MD
77	Penn State Health St. Joseph Family and Community Medicine	Reading	PA	Alexis Reedy-Cooper MD, MPH
78	Penn State Milton S. Hershey Medical Center/Hershey Program	Hershey	PA	Karl T. Clebak MD, MHA, FAAFP
79	Reading Hospital Family Medicine Residency Program	West Reading	PA	John Sheffield MD
80	St. Luke's University Health Network – Anderson	Easton	PA	Andrew Goodbred MD
81	St. Luke's University Health Network – Bethlehem	Bethlehem	PA	Nguyet-Cam Lam MD
82	St. Luke's University Health Network – Miners	Coaldale	PA	Thomas McGinley MD
83	St. Luke's University Health Network – Sacred Heart	Allentown	PA	MameSaye Cisse MD
84	Temple Family Medicine Residency Program	Philadelphia	PA	Menachem Leasy MD
85	Temple University- Northwest Community Family Medicine Residency	Philadelphia	PA	Janet Cruz MD
86	University of Pennsylvania (UPenn) Family Medicine	Philadelphia	PA	Jenny Wang MD
87	UPMC Altoona Family Physicians	Altoona	PA	Donald Beckstead MD, FAAFP
88	UPMC Harrisburg Community Osteopathic – Family Medicine	Harrisburg	PA	Michael Yurkewicz DO
89	UPMC Horizon Family Medicine Residency	Farrell	PA	Martin Johns MD
90	UPMC Lititz Family Medicine Residency	Lititz	PA	Christopher Scheid DO, MBA, FAAFP
91	UPMC McKeesport Family Medicine Residency Program	McKeesport	PA	Jeff Jackson MD
92	UPMC Rural Family Medicine Residency	Williamsport	PA	John Boll DO
93	UPMC Shadyside Family Medicine Residency Program	Pittsburgh	PA	Jacqueline Weaver-Agostoni DO, MPH, FACOF, DipABLM
94	UPMC St. Margaret Family Medicine Residency Program	Pittsburgh	PA	Jonathan Han MD
95	UPMC Washington Family Medicine Residency Program	Washington	PA	Lauren O'Brien MD
96	UPMC Williamsport Family Medicine Residency	Williamsport	PA	Dana Kirschner DO
97	Wellspan Good Samaritan Hospital Family Medicine Residency	Lebanon	PA	Sukhjeet Kamboj MD, FAAFP, CCFP
98	Wellspan Health Chambersburg Hospital Family Medicine Residency	Chambersburg	PA	Donna Prill MD
99	Wellspan York Hospital Family Medicine Residency	York	PA	Stacey Robert MD
100	Brown Family Medicine Residency	Pawtucket	RI	Fadya El Rayess MD, PhD
101	Carilion Clinic Virginia Tech Carilion Family Medicine Program	Roanoke	VA	Mary Beth Sweet MD
102	UVM Family Medicine Residency Program	Burlington	VT	Anne Morris MD

Transforming care.

We are physician-led and patient-centered. Driven by purpose. Informed by the communities we serve in Greater Boston. Invested in dedicated family medicine physicians like you.

At Atrius, we support and celebrate the diverse voices of our teams. Together we fuel innovation. Connect with our community. Deliver outstanding medical care for all.



Together, we can improve lives.
Won't you join us?
Atriushealthproviders.org

Breakfast Table Discussions

Saturday 7:00 am – 8:00 am

Grand Ballroom 5th Floor

Breakfast01 TECH	How to Build Effective Clinical Decision Support in an Electronic Medical Record Aimee Smith DO
Breakfast02 GH	Farm to City: Exploring Immigrant Health in Diverse Landscapes Madalyn Fernbach BS, Samyukta Karthik MPhil, BS, Katrina Bakhl BA, Molly Stegman BS, Michael McShane MD, EdM
Breakfast03 GH	Caring for Refugees and Asylum Seekers Victor Sta. Ana MD, MEd, FAAFP, Noreen Singh MD, Katharine Mackel LCSW
Breakfast04 F, ACGME	A “Novel” Idea: Book Clubs to Improve Your Residency Program Hannah Zimmerman MD, AAHIVS, Alexandria Taylor PharmD
Breakfast05 F, CE	Lessons Learned from Starting a Residency Continuity Site Within a Newly Opened FQHC Amy Holland MD, MA, Kristina Laguerre MD, MPH, Anna Van Niekerk DO
Breakfast06 F, R, ACGME	"What's Your Question" for Coordinators Annette Sheets
Breakfast07 SDOH, CE	Addressing Barriers to Care in the Community: Where Do We Go From Here? Katrina Bakhl BA, Molly Stegman BS, Madalyn Fernbach BS, Samyukta Karthik MPhil, BS, Michael McShane MD, EdM
Breakfast08 F, ACGME, INN	Advancing Innovation in Residency Education (AIRE) and the 4-Year Curriculum Nicholas Weida MD, Kimberly Legere-Sharples MD
Breakfast09 TECH, INN	Artificial Intelligence in Medical Education and Patient Care Joshua Steinberg MD, Derek Barnett BS, MS-3
Breakfast10 F, ACGME	Behavioral Health Curriculum and Faculty Roles Following ACGME Program Requirement Ali Meyer LCSW, Amanda Jones PsyD, MBA
Breakfast11 NT	Combating Weight Stigma in Healthcare Elise Worley DO, Andrea Gauld PharmD
Breakfast12 WELL, F, R	Developing a Culture of Wellness Within a Residency Program Kiran Lorick MD, Elizabeth Lorick MD, Sravya Uppalapati MD
Breakfast13 F, S	Empowering FMIG Leaders: Networking and Best Practices Adam Bradley MM, Alison Johnston BS, Pavit Suri BS
Breakfast14 F, MCH	Enhance Resident Training in Pediatric Care Through Online Resources that Promote Positive Parenting and Relational Health Blair Hammond MD, Elizabeth Loomis MD
Breakfast15 F, CE	Family and Community Medicine Rotation Curriculum Jennifer Lamanna PhD, Ypapanti Meris MD

Breakfast Table Discussions

Saturday 7:00 am – 8:00 am
Grand Ballroom 5th Floor

Breakfast16 <i>PTSIP, REPRO, R</i>	Family Planning in Family Medicine: So You Want to Have a Kid? Rebecca Shipkin MD, MPH
Breakfast17 <i>IH, DEI</i>	Improving Access to Integrative Medicine in Underserved Populations Andria Matthews MD, MPH, Nosheen Sandhu MD
Breakfast18 <i>IH</i>	Integrating Lifestyle Medicine into Family Medicine Residency Elizabeth Anderson MD, FAAFP, DipABLM, Adwoa Boahene MD, MPH, DipABLM, Susanna Evans MD, Katie O'Malley MD
Breakfast19 <i>REPRO</i>	Meet the FACTS Ambassadors for Women's Health Sean McCann OMS-1, Connor Bradley, Victoria Lussier, Mary Benz
Breakfast20 <i>PTSIP, WELL</i>	Thriving Through Transition: Connection and Inspiration For Career Changes Martha Seagrave PA-C, RN, Laura Sturgill MD, MEd
Breakfast21 <i>S, ACGME</i>	Rock Your FM Residency Application and Interview Samantha Rai MD
Breakfast22 <i>DEI, IH</i>	Spirituality in Medicine Hemalatha Senthilkumar MD, Hillary Mount MD, Laura Miller MD, MPH
Breakfast23 <i>DEI</i>	Talking About Racial Health Disparities Kristina Johnson MD, Stephanie Miller MD, Mary Cooper MD, Manasa Irwin MD
Breakfast24 <i>WELL</i>	To Opt-in or Opt-Out: Discussing the Philosophical and Logistical Implications of Two Different Models for Resident Physician Mental Health and Well-being Alan Schwartz PsyD, Mark Mason PhD, David York PhD, Jim Highberger MPA, Emily Lisco MD
Breakfast25 <i>IMM</i>	Vaccine Hesitancy in Primary Care Stephanie Liu MD, Madeline Chaverra MD
Breakfast26 <i>F, ACGME</i>	New York State Program Directors/Associate Program Directors Heather Paladine MD, MEd, FAAFP, Ephraim Back MD
Breakfast27 <i>MCH, REPRO</i>	Exploring Models of Prenatal Care for Family Medicine Residents Mary Sutter MD, Marian Younge MD, Carolyn Pearce MD
Breakfast28 <i>DMCC</i>	How Low Can Your No Shows Go? Andrew Dixon MD, Kerri Walsh RN, Jennifer Valiente RN, Michel Klijn BS, Nicole Quindazzi MS
Breakfast30 <i>ACGME, F</i>	Carrots not Sticks: Driving Desired Professional Behavior, Citizenship, and QI Engagement Through a Resident Incentive Program Julianne Lucco MD, Patricia Kroth DO, MBA

Clinical Camp Tables

Saturday September 21, 2024
Franklin Hall 7

Saturday Sept. 21, 2024
Session 1: 12:00 pm – 1:10 pm

Clinical Camp Table 01

Vaginal Delivery

Catherin Feaga DO
Meritus Family Medicine Residency Program

Clinical Camp Table 02

EKG Reading

Mario Maffei MD
Virtua Family Medicine Residency Program

Clinical Camp Table 03

Shave and Punch Biopsies

William Warning MD
Crozer Health Family Medicine Residency Program

Clinical Camp Table 04

IUD Insertion

Jenny Wang MD
University of Pennsylvania Family Medicine

Clinical Camp Table 05

Contraception

Caroline LaFave DO
Maine Dartmouth Family Medicine Residency

Saturday Sept. 21, 2024
Session 2: 1:20 pm – 2:30 pm

Clinical Camp Table 06

Point of Care Ultrasound

Joshua Dearing MD
UPMC Williamsport Family Medicine Residency

Clinical Camp Table 07

Managing Miscarriage in the Primary Care Setting

Mindy Brittner MD, MS, FAAFP
The Institute for Family Health

Clinical Camp Table 08

Breastfeeding & Pumping

Rebecca Nguyen MD
Middlesex Family Medicine

Clinical Camp Table 09

Suturing Techniques

Janet Cruz MD
Temple University- Northwest Community Family Medicine Residency

Clinical Camp Table 10

Caring For The Underserved

Dom Geffken MD
NH Dartmouth Family Medicine Residency at Concord Hospital

- Poster01** MCH, ADV **Advancing Adolescent Advocacy Through Transitional Medicine**
Chayanne Gumbs BS, Bravada Hill BA, BS, MS, Olasubomi Ajayi BS,
Andria Matthews BA, MPH, MD
- Poster02** ADV **Empowering Future Family Physicians: Integrating Legislative Advocacy Curriculum for Residents**
Diana Omoyeni MD, MS, Alice Gao MD, MPH
- Poster03** ART, GER **From Art to Wellness: The Effects of Art in the Geriatric Population**
Yeimi Rodriguez MD, Blanca Vargas MD, Sonia Velez MD, JD,
Nicole Elizabeth Delgado-Salisbury EdD
- Poster04** TECH **What AI Can Never Do: Listening with Compassion**
Gerald Hansen MD
- Poster05** OSTEO **Automated OMT Logging**
Matthew Betschart DO, Olutosin Quadri DO, Danielle Astarita DO, Jincy Cherian DO,
Aimee Smith DO
- Poster06** TECH **Using Artificial Intelligence to Lower Diabetic A1C: Improving Diabetes Education**
Dyrell Pinder MD, Christopher Anghel MD, Nicole Elizabeth Delgado-Salisbury EdD
- Poster07** RESQI **Exploring the Prevalence of Caregiver Syndrome among Caregivers of Homebound Patients: A Telephone Survey Approach**
Abigail Colasacco MD, Padmani Doobay MD, Eugene Decker MD,
Tuesday Remsburg CRNP
- Poster08** IMM, RESQI **A Novel Collaboration Between Medical and Dental Providers: Identification of Gaps in HPV Vaccination Status**
Biju Babu MD, Greg Dobash MD, Jessica Brennan RDH, Steven Picozzo MD,
Anna Derian MD
- Poster09** RESQI **Are They Molecular Twins? Examining the Resemblance Between Intron 10 in Plasmacytoma Variant Translocation 1 and Minichromosome Maintenance Complex Component 3 Protein**
Eleonora Achrak BA, OMS3
- Poster10** DMCC, RESQI **Attitudes and Knowledge About Bystander CPR in a Family Health Center**
Hector Reyes Jr MD, MPH, Zacheriah Benton MD, Rodika Coloka-Kump DO,
Jennifer Ringstad MD
- Poster11** DMCC, RESQI **Babesiosis in Winter**
Harrison Eckert DO, Erin Shenouski BS, Arpine Avagyan MD, Jimmy Chua MD
- Poster13** WELL, RESQI **How Can We Optimize the Roles of Our Medical Students and Make Them an Effective Part of our Care Team?**
Radeeb Akhtar MD, MPH
- Poster14** REPRO, RESQI **Implementing Safe Handoffs Between Family Medicine and Obstetric Teams on the Labor and Delivery Floor**
Jessica Quinn MD
- Poster15** DMCC, RESQI **Improving Resident Clinic Handoffs in an Academic Family Medicine Residency**
Isabella Brout MD, Rachel Souza DO, MS, Kaylin Pennington MD, MPH,
Suki Tepperberg MD, MPH
- Poster16** RESQI **Integration of a Clinical Coordinator to Increase Transitional Care Visits at Summa's Family Medicine Center Residency Program**
John DiSabato MD, Verlaire Blaser DO, Susan Poole-Wilke BA, BSN, MSN
- Poster17** RESQI **Measuring Handgrip Strength in Primary Care**
Lisa Weiss MD, MEd, FAAFP, Roy Morcos MD, Risha Patidar MD,
Garrett Kellar EdD, CCRP, RCEP, EP, EIM3

Saturday, September 21, 2024
12:00 pm – 1:10 pm
Headhouse Tower

Poster Session 1

(Posters 1 – 75)

- Poster18** DMCC, RESQI **Tibial Plateau Fracture: A Complication of a Direct Blow to the Knee**
Lidiya Didenko MD, Brett Keller DO, Abigail Colasacco MD, Padmani Doobay MD, Kenneth Ly MD
- Poster19** F, ACGME, RESQI **Evaluation of Resident Oral Presentation with Relation to Family Medicine Milestones**
Jillian Jagoe DO
- Poster20** F, RESQI **Annual Wellness Visit Resident Curriculum**
Ashley Panichelli MD, Jamie Rapacciuolo DO
- Poster21** DMCC, RESQI **Can an Early EKG Interpretation Training Session Improve Family Medicine Residents' Ability to Identify and Interpret Key EKG Elements at One Year?**
Edward Ellis DO
- Poster22** CE, RESQI **Catch Me If You Can**
Majed Dayoub MD, Alexis Laguna MD, Rabeea Farhan MD, Joo Kim
- Poster23** ACGME, R, RESQI **CV Builder and Advising Map – Tools for an Ever-Changing Residency Milieu**
Jincy Cherian DO
- Poster24** F, RESQI **Flipped Classroom Model in a Clerkship: Evaluating Learning and Interprofessional Activities**
Kathleen Mechler MD, Spencer Dimon, Melanie Chalfin MPH
- Poster25** ART, GER, RESQI **Implementing a Structured Narrative Reflection Experience in a Family Medicine – Palliative Care Clerkship**
Jordan Lazarus BS, Melanie Chalfin MPH, Kathleen Mechler MD
- Poster26** F, ACGME, RESQI **Implementing Communication Coaching Curriculum with Family Medicine Residents**
Amanda Jones PsyD, MBA
- Poster27** DMCC, RESQI **Integrating Cognitive Behavioral Therapy (CBT) into the Family Medicine Residency Curriculum**
Ali Meyer LCSW
- Poster28** ACGME, RESQI **Simulation-Based Mastery Learning: A Competency-Based Procedural Curriculum for Central Venous Catheter Placement**
Jennifer Yee DO, Bethany Panchal MD, Katherine Etter DO, Varsha Chiruvella MD
- Poster29** F, RESQI **Teaching Medical Interviewing Skills to Future Healthcare Professions in Collaboration with Area Health Education Center (AHEC)**
Natasha Salmen BS, Michael Appleman Maed
- Poster30** DEI, REPRO, RESQI **Addressing Health Equity in Postpartum Contraceptive Care: Investigating Disparities and Promoting Access**
Lauren Castelbaum BA, Sarah Wegman BA, Jacob Gomez BS, Scott Hartman MD
- Poster31** DEI, RESQI **Do Negative Relational Schemas Contribute to Cognitive Burdens of Discrimination? Testing a Parallel Mediation Structural Equation Model**
Haoming Liu DO, Alan Roth DO, Gina Basello DO, Cameron Nienaber MD, Elizabeth Brondolo PhD
- Poster32** DMCC, RESQI **Optimizing Osteoporosis Care with CQI**
Marjorie Affel MD, MPH, Sarin Itty DO, Maha Upadhyayula MD
- Poster33** DMCC, RESQI **Bannwarth Syndrome, Masquerading as MS**
Reina Qu DO
- Poster35** ADSU, RESQI **Evaluating Tobacco Use Among United States Air Force Military Trainees**
Hythem Bishtawi DO, Catherine Martsoff
- Poster36** DMCC, RESQI **A QI Project Aimed at Identifying Patients with Undiagnosed Chronic Kidney Disease to Aid Implementation of Interventions to Slow Progression**
Chinwe Ike-Chinwo MD, Janet Cruz MD, Leon McCrea MD
- Poster37** DMCC, RESQI **Atypical Kawasaki Disease: Diagnostic Challenges and Successful Intervention**
Jarrett Parks MD

Saturday, September 21, 2024
12:00 pm – 1:10 pm
Headhouse Tower

Poster Session 1

(Posters 1 – 75)

- Poster38** DMCC, RESQI **Bleeding or Destruction: What is Causing the Anemia?**
Theresa Yurkonis DO, MHSA, John Lasky MD
- Poster39** CE, DMCC, RESQI **Closing the Gap: A Faith and Diabetic Education Collaborative**
Jason Tucker MD, David Yarnell MD
- Poster40** DMCC, RESQI **Evaluation of Regional RN Care Navigation Partners to Optimize Uncontrolled Type 2 Diabetes as an Extension of Primary Care**
Ashley Serino MSN, Samantha Weiss DO, Autumn Kieber-Emmons MD, Roya Hamadani, Beth Careya MD
- Poster41** DMCC, RESQI **Exercise Induced Vasculitis**
Somya Sharma DO, Dalea Al-Hawarri MD
- Poster42** DMCC, RESQI **Histoplasmosis and HLH: Emerging Challenges in Lupus Management**
Lidiya Didenko MD, Padmani Doobay MD, Abigail Colasacco MD, Kenneth Ly MD, Dayoub Majed MD
- Poster43** DMCC, RESQI **Impact of a Diabetic Retinal Exam Screening Program on Quality Measure Gaps For Diabetic Retinopathy at a Family Medicine Practice: An Interprofessional Initiative**
Chelse Wisenor DO, Michael Hair PharmD Candidate, Alyssa Greenaway PharmD Candidate, Alexandra Tardugno PharmD Candidate, Autumn Stewart-Lynch PharmD, BCACP, BC-ADM
- Poster44** DMCC, RESQI **Implementation of Clinical Decision Support to Appropriately Screen Patients At Risk for Chronic Kidney Disease (CKD)**
Aimee Smith DO, Charissa Lewis MD, Arjun Patel MD, Sarah Nosal MD, Yulia Veras BA
- Poster45** DMCC, RESQI **Introducing Infliximab's Interstitial Effects**
Jeevitha Anthony MD, Sreekar Punur MD, Daisy Zhang MD
- Poster46** DMCC, RESQI **Not Everything is an Allergic Reaction; An Atypical Presentation of SVC Syndrome**
Jennifer Lopez MD, Gloria Laboy Muniz MD, Uzma Shahzad MD
- Poster47** DMCC, RESQI **Optimizing Osteoporosis Care: The Impact of Smartset Implementation and Health Maintenance Reminders on Osteoporosis Screening Rates in IFH patients**
Sarin Itty DO, Mahati Upadyayula MD, Marjorie Affel MD
- Poster48** DMCC, RESQI **Reactive Infectious Mucocutaneous Eruptions (RIME) in COVID-19**
Rabeea Farhan MD
- Poster49** DMCC, RESQI **Sins of the Past: Meeting the Measure for Statin Use**
Kyle Yuen DO, Mary Rose Puthiyamadham MD, Esteban Martinez-Villa BS
- Poster50** IMM, RESQI **Increasing Influenza Vaccination in Primary Care Clinics: A Quality Improvement Project**
Devan Oodal MD, Steven Nguyen MD, Munish Bakshi
- Poster51** GER, MH, RESQI **Improving Geriatric Depression Detection Rates: A Comparative Study of PHQ-2 Versus Geriatric Depression Scale**
Susan Zhang DO, MPH
- Poster52** GER, RESQI **Practical Solutions to Facilitate Health Care for Geriatric Patients in the Bronx at a FQHC**
Belinda Johnston MD, Abed Jean-Louis MD, Mursell Khairzada DO
- Poster53** DMCC, RESQI **Family Medicine Residents' Understanding of and Attitudes Towards Medical Aid in Dying (Maid)**
Sachi Desai DO, Anjali Sivendra MD, Janice Baker MD
- Poster54** DMCC, RESQI **In the Gray Area**
Demitria Sawelson MD, Janet Cruz MD
- Poster55** IMM, RESQI **Going Viral: insights into Patients's Vaccine Hesitancy**
Renata Carneiro PhD, Loreta Keil MD, Mame Cisse MD, Fayza Aliou MD
- Poster56** IMM, RESQI **Improving Adult Immunization Rates in Ethnic and Minority Population**
Gayathri Gurumurthy MD

Saturday, September 21, 2024
12:00 pm – 1:10 pm
Headhouse Tower

Poster Session 1

(Posters 1 – 75)

- Poster57** DMCC, RESQI **Scrotal Abscess in the Setting of Uncontrolled Diabetes**
Lidiya Didenko MD, Kenneth Ly MD, Abigail Colasacco MD, Padmani Doobay MD, Majed Dayoub MD
- Poster58** WELL, RESQI **Resident Physical Lifestyle and Diet Survey: A Multi-State and Program Analysis**
Jimmy Rathod MD, Nicole Elizabeth Delgado-Salisbury EdD, Jenenne Geske PhD
- Poster59** NT, CE, RESQI **Go for the Greens**
Zaynah Quader MD, Caterina Giordani-Trejo MD, Rachana Amin MD, Eva Vanegas MD
- Poster60** IH, F, RESQI **Survey: Family Medicine Residents' Comfort Level in Implementing Lifestyle Medicine into the Residency Curriculum and Their Practice**
Sachi Desai DO, Aphnie Germain DO, Antonia Carbone PharmD, Stuart Green DMH, LCSW
- Poster62** MCH, RESQI **Did We Offer Aspirin? Identifying Missed Opportunities to Reduce Risk of Preeclampsia**
Jaclyn Grode MD, Anni Joyce-Rocchio RN, Alissa Correll MD
- Poster63** MCH, RESQI **Enhancing Postpartum Visit Compliance in a Family Medicine Residency Clinic: A QI Initiative**
Abigail Colasacco MD, Padmani Doobay MD, Radha Patel MD
- Poster64** MCH, RESQI **Improving Postpartum Care and Contraception in the Underserved, Primary Care Setting**
Alexandra Kocsik MD, Ashu Singh MD
- Poster65** MCH, RESQI **Management of Severe Lumbar Radiculopathy During Pregnancy**
Adeima Ibanga MD, Robin Codjoe MD, William Kayal MD, Sameer Siddiqi DO
- Poster66** MCH, RESQI **Partnering with Lactation Consultants in a Family Medicine Residency**
Adwoa Boahene MD, MPH, Elizabeth Anderson MD, Courtney Goettel MD
- Poster67** MCH, RESQI **Chronic Pain and Depression: A Multimodal Therapeutic Intervention**
Zoe Quint DO, MPH, Minah Ebrahim MD, Mary Rose Puthiyamadham MD
- Poster68** DMCC, RESQI **Sports Related Concussion Evaluation and Management**
Brennan Dagle MD, Lee Mancini MD, CAQSM, FFAFP, CSCS*D, CSN, Michael Maddaleni MD
- Poster69** NT, RESQI **Effect of an Educational Intervention on Food Allergy Knowledge of Pediatric and Family Medicine Residents**
Gabriel Sraha MD, Christian Toribio-Dionicio MD, Nizar Tangour MD, Ruth Vela-Sosa MD, Nicole Elizabeth Delgado-Salisbury EdD
- Poster70** SDOH, RESQI **Assessing Health-Related Social Needs and Perceived Stress in Two Safety Net Hospitals**
Nida Hussain DO, Alan Roth DO, Gina Basello DO, Cameron Nienaber MD, Elizabeth Brondolo PhD
- Poster71** TECH, RESQI **Assessing The Accuracy of Proposed Billing In An Outpatient Clinical Setting**
David Bigley DO, Pierce Knox DO, Rebecca Russell MD
- Poster72** IH, RESQI **Assessing the Impact of a Lifestyle Medicine Curriculum on Medical Residents' Knowledge, Self-Efficacy, and Attitudes**
Devan Oodal MD, Sanjar Skrenes MD, Susanna Evans MD, Matheus Sanches Peraci MD
- Poster74** ADSU, RESQI **Overdose in the Primary Care Setting**
Tricia Bautista MD
- Poster75** ADSU, RESQI **Successful Discontinuation of Sublingual Buprenorphine Treatment Using Extended Release Buprenorphine Injection for Opioid Use Disorder**
Velam Madhu MD, Jason Burmeister MD, Jeanne Spencer MD

Saturday, September 21, 2024
1:20 pm – 2:30 pm
Headhouse Tower

Poster Session 2

*As of August 16, 2024

(Posters 76 – 151)

- Poster76** GH, RESQI **A Framework for Implementing Refugee Care In Your Residency Program**
Seyedeh Sadaf Mirrazavi MD, Jensine Agenmonmen MD, BHSc, Nicolette McLain MD, Peter Yang MD, Sabba Sarwar MD
- Poster77** DEI, RESQI **Ageism Awareness: The Hospitalized Centenarian**
Aphnie Germain DO, Anjali Sivendra MD, GianAngelo Graci MD
- Poster78** REPRO, DEI, RESQI **Beyond Guidelines: The Impact of Neighborhood Poverty and Racial Composition on Hypertensive Disorders of Pregnancy**
Noreen Singh MD, Aimee Smith DO, Saskia Shuman MHS, Jacqueline Chiofalo MPA
- Poster79** SDOH, RESQI **Discussing Determinants: Increasing Access to Resources for Patients Identified At-Risk by Social Determinants of Health Screening**
Reid Strobl MD, Sandra Herrera DO, Abbey Lindholm DO, Shruti Dighe MD, Francesca Bellantino MD
- Poster80** NT, IH, RESQI **Food as Medicine: Designing and Implementing a Produce Prescription Program at Federally Qualified Health Centers**
Sarah Nosal MD, FAAFP, Esha Mehta MD, Kenny Escobar MPH, Rachel Ingram MSW, MEd, Charmaine Ruddock MPH
- Poster81** MCH, RESQI **Incorporating a Successful Reach Out and Read Program into Your Health Center**
Orlene Kinney MD, Nicole Elizabeth Delgado-Salisbury EdD
- Poster82** REPRO, RESQI **Menstrual Stigma, Experiences, and Preferences in the Rochester Deaf Community: A Mixed Methods Study**
Cindy Jiao MD, Rhiannon Wagner EMT-B, Jenna Stewardson BS, Tiffany Panko MD, MBA
- Poster83** SDOH, RESQI **Street Medicine: Meeting Patients Where They Are**
Kristina Ramdial MD, MPH, Kathleen Bannerman MD
- Poster84** DMCC, RESQI **Motivations for Mammogram Screening and Enhancing Breast Cancer Screening in a Federally Qualified Health Center**
Tshering Sherpa DO
- Poster85** DEI, CE, S **A Medical Student-Led Health Education Program For The Local LGBTQ+ Community**
Jessica Cohen MPH, Bucky Hager MS, Ann Rutter MD, MS
- Poster86** MCH, NT, F **Medical Provider Course to Expand Knowledge and Confidence Regarding Lactation.**
Amanda Despart CLC, Sarah Harter CLC, Kate Tauber MD
- Poster88** DEI, CE **Conducting A Needs Assessment as a Foundation for Building an LGBTQ+ Service-Learning Opportunity**
Bucky Hager MS, Jessica Cohen MPH, Ann Rutter MD
- Poster89** SDOH, CE **Transforming Healthcare in Underserved Communities By Enhancing Awareness of Digital Health Equity**
Vanessa Rodriguez BS, MS3, Jhaimy Fernandez MD, Theresa Nevarez MD
- Poster90** DMCC **ITP Associated with Lupus, H. Pylori, and Hepatitis B**
Amisha Nimawat BHHS, ASHHS, Bamidele Johnson MD
- Poster91** DMCC **Recognizing the Signs: Early Diagnosis of Stiff Person Syndrome**
Joya Rogers BS, MRL, Nishal Sanjeev MD
- Poster92** TECH **Impact of Telemedicine in Healthcare**
Shweta Verma BS, MS3
- Poster93** ADV **A Climate Change and Cooling-Informed Guide to City Tree Planting in Cleveland**
Trina Pal BS, Robert Brand PhD, Ashwini Sehgal MD, MPH
- Poster94** ACGME, F, S **Qualitative Exploration of Motivators and Limitations in Pursuing Broad-Scope Family Medicine for Graduates of a Single Institution**
Sarah Yoder BS, Traci Marquis-Eydman MD
- Poster95** DEI, S **Shining a Light on Unconscious Bias of First-Year Medical Students in a Community-Based Learning Course**
Deniz Osizik PhD, Margaret Eshleman MEd, Jennifer Han MD, MPH, Kim Bullock MD, FAAFP, LaTasha Seliby-Perkins MD

Saturday, September 21, 2024
1:20 pm – 2:30 pm
Headhouse Tower

Poster Session 2

(Posters 76 – 151)

- Poster96** *DEI, RESQI* **Augmenting Research on South Asian and South Asian Women's Health in America: The Case for Data Disaggregation**
Priyanka Meesa BS, Subhashini Chandrasekharan BS, MD, Sarah Kureshi BS, MPH, MD
- Poster97** *PTSIP* **Regional Variation of The Gender Wage Gap in Family Medicine**
Allison Willett MPP, Mark Carrozza MA, Lars Peterson MD, PhD, Yalda Jabbarpour MD
- Poster98** *REPRO, DMCC* **Review of Laboratory Testing and Biomarker Screening for Preeclampsia**
Maansi Jayade MS, BS, Antonia Oladipo MD, MSCI, FACOG
- Poster99** *ADSU* **Addressing Substance Use Stigma Perpetuated by First Responders and the Role of Family Medicine Physicians**
Nicholas Lozano MBS, MPH, Katy Pugliese MA, Clare Strange MSW, PhD, Naomi Nguyen MA, Sheetal Ranjan PhD
- Poster102** *DMCC* **Preventing Pneumocystis Pneumonia: The Case for Primary Prophylaxis in Rituximab Users**
Jane Taylor BS, Brian Pickering DO
- Poster103** *DEI, S* **Establishing a Baseline: Medical Student Perspectives on Underserved Care**
Kebo Zhang BS, Michael McShane MD
- Poster104** *RESQI* **A Multifaceted Approach to Enhancing Clinic Efficiency and Patient Satisfaction in a Student-Run Free Clinic**
Joseph Kessler BS, MS, Maham Alvi, Jessica Lee, Leo Puhalla, Mariquita Belen MD
- Poster105** *DEI, CE* **Coordination of Caring: Establishing Free Clinic Patient Care Relationships to Increase Volunteer Engagement**
Caleigh Rudolf BS, Rana Youssef BS, MMAS, Kelly Cooper BS, Clara Britton BS, Mariquita Belen MD
- Poster106** *SDOH, MCH* **Food Insecurity and Childhood Development**
Rana Youssef BS, MMAS, Michael Appleman MA, Ed
- Poster107** *F, R, S* **Day in the Life of a Future Healthcare Professional in Collaboration with Area Health Education Center (AHEC)**
Jacob Fay BS, Natasha Salmen BS, Elsa Khan BS, Maureen Drummond BA, MS
- Poster108** *CE, S* **Expanding SRFC Patient Education Services To Improve Patient and Volunteer Perception of Clinic Flow and Satisfaction**
Quan Lu BA, Brandon Petrovich BS, MS, Sophia Vemulapalli BS, Michael Mappes BS, Mariquita Belen MD
- Poster109** *DMCC* **Abnormally Large Submandibular Sialolithiasis**
Maria Alamir B.S, Joseph (Joe) Mandato B.S, Robert Bales MD, MPH, FAAFP
- Poster110** *DMCC* **A Colorful Enigma: A Case of Orange Palpebral Spots in a 63-Year-Old Female**
Obarikanemi Nwogu MS, Karl Kellawan MD
- Poster111** *DMCC* **Metastatic Malignant Melanoma from Unknown Origin to the Jejunum: A Case Report**
Nandini Patel BS, Rei Kola MS, Xuefeng Zhang MD, Robert Bales MD, MPH, FAAFP
- Poster112** *PTSIP* **COMMpanion – A Subscription-Based, Virtual Primary Care Service: Model, Utilization, Impact**
Justin James BA, Daniel Schlegel MD, MHA
- Poster113** *DMCC* **Risk of Cardiovascular Outcomes in Adults Over 50 Using Inhaled Corticosteroids to Treat Asthma**
Simrat Jassal BA, Elen Deng, Wen-Jan Tuan MD
- Poster114** *SDOH, IH* **More About Me: Improving Patient Satisfaction Through Personal Connection**
Brandon D'Souza BS, BA, Hannah Heselton BA, Kelan Fogarty BS, Michael Flanagan MD
- Poster116** *TECH, MH* **Machine Learning as a Tool for the Prediction of Suicidal Thoughts**
Madalyn Fernbach BS, Khalid Nawab MD
- Poster117** *DEI, ADSU* **Impact of Provider Language on Patient Outcomes for Patients w/ Substance Use Disorder**
Brittany Smith MS, Nandhini Veeraraghavan MD
- Poster118** *CE, MCH* **Family Building: Including the Benefits of Open Adoption; A Case Report**
Aislinn McCleery BS, Gloria Bachmann MD, MMS

Saturday, September 21, 2024
1:20 pm – 2:30 pm
Headhouse Tower

Poster Session 2

(Posters 76 – 151)

- Poster120** MH, WELL **Variables Contributing to The Psychosocial Strain on Caregivers of Patients with Autism Spectrum Disorder**
Maduka Gunasinghe BS, Ian Nuzzelli BA, DO
- Poster121** ADV, REPRO **Fertility Care as Reproductive Justice**
Sruthi Kunamneni BS, Jessica Klein BS, Rachel Rosenberg MD
- Poster122** DMCC, RESQI **High-Quality Primary Care For Patients With Cerebral Palsy: A Quality Improvement Initiative**
Alexandra Massaro BS, Rachel Rosenberg MD
- Poster123** NT, DMCC **A Concise Tool for Dietary Counseling in Patients with Diabetes**
Jordan McCarthy BS, Rachel Rosenberg MD, EDM
- Poster124** MCH, DMCC **No More Suffering in Silence: Care of Menopause Symptoms in Primary Care**
Emilie Schurenberg, Sarah Ward, Rachel Rosenberg EDM, MD
- Poster125** RESQI, WELL **The Journey and Impacts of Exercising Consistently Due to a ‘Gym Buddy’: A Case Report**
Sandra Freeman BA, Gloria Bachmann MD, MMS
- Poster126** MCH, RESQI **The Benefits of Patient-Doctor Recurrency in an Ambulatory Setting: A Case Report on Continuity of Care**
Deshae Jenkins MS, Riddhimaa Sinha BA, Gloria Bachmann MD
- Poster127** DEI, DMCC **Utilizing a Visual Learning Equity Lecture in Dermatology to Train Medical Students to Identify Skin Lesions Across Skin Tones**
Rucha Janodia BA, Rachel Rosenberg EDM, MD, Sophia Chen DO, MPH, Christin Traba MD, MPH, Jeremy Grachan PhD
- Poster128** NT, S **Clinical Training Impact of Student Delivered Patient Nutrition Education**
Alexis Metoyer BA, Nicholas DeMario BS, Michael Fleming BS, Amitoj Nagaich BS, Cynthia Cheng PhD, MD
- Poster129** NT, RESQI **Correlation of Neck Circumference with BMI and Waist Circumference in a High-Risk Urban Cohort**
Jay Satasiya BS, Rohith Tudi BS, Divya Sankisa BS, Abigail Manning BS, Nirmal Patel, Cynthia Cheng MD, PhD
- Poster130** DMCC, S **Student-Delivered Jefferson Heart Health – Education Program for Cardiovascular Disease Risk Reduction**
Ayush Shah BS, Rithvik Kata BS, Claire Christman BS, Nikita Nair BS, Benjamin Varughese BS, Cynthia Cheng MD, PhD
- Poster131** NT, S **The Impact of the Jefferson Weight Loss Program on Weight and Diet Risk Score**
Miriam Solowey BS, Lydia Hu BS, Alexandra DeMichele BS, Olivia Ackley BS, Cynthia Cheng MD, PhD
- Poster132** REPRO, MCH **Paternal Involvement in the Labor and Delivery Ward Maternity Setting at Queen Elizabeth Central Hospital in Malawi**
Hanna Blankemeier BA, Meghan Gannon PhD, MSPH, Kayla Holston MD, Sophia Linguiti BA, Christopher Harnish BA,
- Poster133** ART, F, S **When Mentors Become Monsters: Using Cartoons to Explore Hierarchy and Feelings of Incompetence in Medical Training**
Casey Fishman BA, Justin Do BS, Fred Markham MD
- Poster134** NT, SDOH **Impact of Student-Led Nutrition Session on Food Insecurity Screening Knowledge and Utilization in Medical Students**
Joya Ahmad BA, Elana Cohen BFA, BA, Kelly Veerasammy BS, Eva Kristoferson BS, Crystal Marquez MD
- Poster135** DMCC **Ovarian Cancer: Early Detection in the Primary Care Setting**
Kristina Bell BS, BA, Bushra Atta Ur Rehman MBBS
- Poster136** REPRO **NYS Comprehensive Contraception Coverage Act: What Barriers are Encountered When Prescribing 1-year’s Supply of Oral Contraceptive Pills (OCPs) Dispensed in a Single Pharmacy Visit?**
Phoebe Ilevbare BA, Rachael Ferraloro BS, Allison Pernice BS, Caroline Mortelliti BA, MMSc, Joshua Steinberg MD

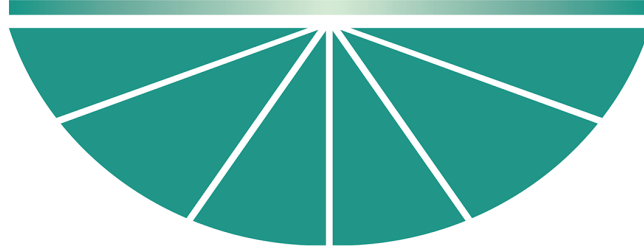
Saturday, September 21, 2024
1:20 pm – 2:30 pm
Headhouse Tower

Poster Session 2

(Posters 76 – 151)

- Poster137** DMCC **Exploration of Correlates With Poor Glycemic Control in our Diabetic Patients**
Bridget Watkins AAS, BA, Elizabeth James, Lindsay Shanks-Swan, Shane Gopaul,
Ramandeep Mangat, Joseph Steinberg MD
- Poster138** DMCC **Copper Deficiency: A Complex Neurocognitive Presentation**
Eryn Fitch BS, Robert Graffin MD, Nguyet-Cam Lam MD
- Poster139** **The Design and Impact of a Primary Care-based Food as Medicine Intervention on Food and**
NT, SDOH, MCH **Nutrition Security in Families with Children**
Trinity Pauline Rico BA, Arielle Labiner BA, MHS, Sahar Rizwan BS, Qadira Ali MD, MPH,
Laura Fischer PhD, RD
- Poster140** NT, SDOH, RM **SNAP Into Health: Addressing Food Insecurity in a Rural MA Community**
Jennifer Marino BA, Eden Diamond BA, Kristina Gracey MD, MPH
- Poster141** REPRO **Standing Up a Doula Program in an Academic Medical Center**
Ahnyia Sanders MS, Cherise Hamblin MD
- Poster142** DMCC **Evaluating Oral Health Care Access Among Individuals Visiting a Worcester Free**
Medical Program
Victoria Pajak BS, Tyler Healy MD, Scott Hebert MS, Hugh Silk MD, MPH
- Poster143** ADV **Empowering Survivors of Commercial Sexual Exploitation: A Student-Led Healthcare Initiative**
for Education and Advocacy
Ana-Maria Poole BS, Ariana Fantakis Ettorre BS, Jennifer Bradford MD, MPH, Stevie Yang MD,
Evelyn Semenov MD
- Poster144** WELL, RM **Fostering Healthy Lifestyles Among Healthcare Workers in Rural Centers**
Taylor McClennen BA, Kristina Gracey MD, MPH
- Poster145** DMCC **Pelvic Pain Research and Osteopathic Manipulation Application (PPROMA) Study**
Stephanie Pare OMS-IV, Amy Wysong MS, OMS-IV, Abigail Blake-Sheehy MPH, OMS-IV,
Christopher A. Frothingham DO
- Poster146** DMCC **Clinical Use of Ascites on Presentation and Discovered Elevated CA-125 in Patients without**
Ovarian Cancer
Amy Wysong MS, Megan Franzetti DO, MPH
- Poster147** F, R, S **The Art of Primary Care**
Su Bin Hahn BE
- Poster148** NT, S **Culinary Medicine as a Tool to Increase Medical Student Knowledge in Nutrition and**
Confidence in Patient Diet Interviewing
Molly Hurd BS, MS, Sarah Krumholz BS, RD, Whitney Calkins MD
- Poster149** IMM, DMCC **Factors Associated with Participation in HPV Vaccine and Cervical Cancer Screening**
Danielle Fastring PhD, MS, MPH, Aakash Anandjiwala MS3, Tanaya Chaphekar MS3,
Mary Lee MS3, Amal Ismail MS3
- Poster150** DMCC **From Bench to Bedside : A Scoping Review of Gene Therapy in Management of Cardiomyopathy**
Shwetha Gopal MSIV, Olumide Ijishakin, Olusayo Oluwasanmi, Helen Surafeal, Efe Oni,
Sanjeev Nischal MD
- Poster151** DMCC **Physical Inactivity in Three Bangladeshi Families Affected By Diabetes: A Holistic Multiple**
Case Study
Sumeet Bhinder MSIV BS, Sugandha Gupta PhD, Sanjeev Nischal MD

FAMILY MEDICINE
EDUCATION CONSORTIUM, INC.



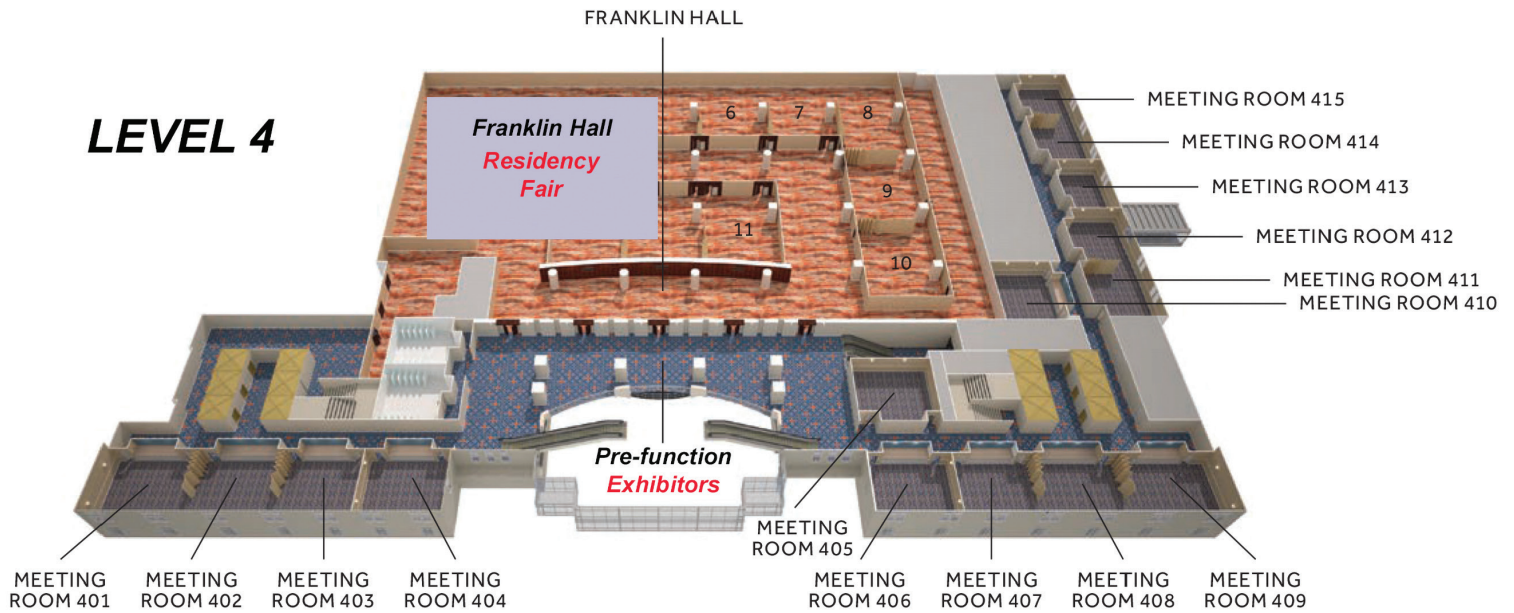
2025 FMEC Annual Meeting



September 18-20, 2025
Huntington Convention Center
Cleveland, Ohio

Hotel Maps

LEVEL 4



LEVEL 5

