



FMEC Annual Meeting Overview and Q&A For Residency Coordinators and GME Staff

April 9, 2025

**FMEC 2025 Annual Meeting
September 18-20, 2025, Cleveland, OH**



Please
introduce
yourself in
the chat!

**Use the chat or unmute yourself to ask
questions or answer our questions**

Please mute when you are not speaking



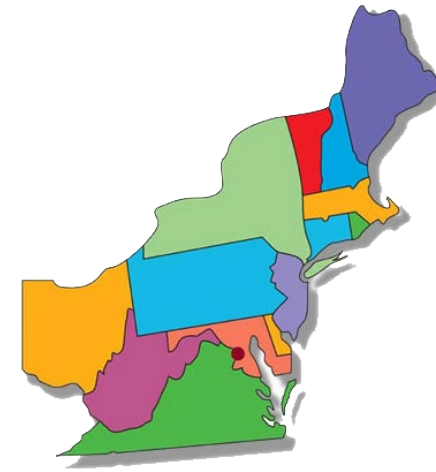
What is the FMEC?

Northeast Region

Connecticut * Delaware * Massachusetts * Maryland * Maine * New Hampshire * New Jersey *
New York * Ohio * Pennsylvania * Rhode Island * Vermont * Virginia * West Virginia * Washington DC

FMEC Goals

- Promote family medicine and primary care to students
- Support residents as they transition in their careers
- Strengthen academic family medicine
- Create and sustain quality improvement initiatives
- Stimulate innovative approaches to primary care service delivery



60 medical schools and over 220 family medicine residency programs

FMEC Staff

See <https://www.fmec.net/fmec-staff>

Scott G. Allen, MS, CEO (since 2021)

Lisa Schwieterman, CPS, Senior Administrative Assistant (since 2000)

- General admin, finances, Annual Meeting submissions and program schedule

Jennifer Stamper, Project Coordinator (since 2008)

- Student scholarships, graphics/marketing, newsletters, social media, job postings

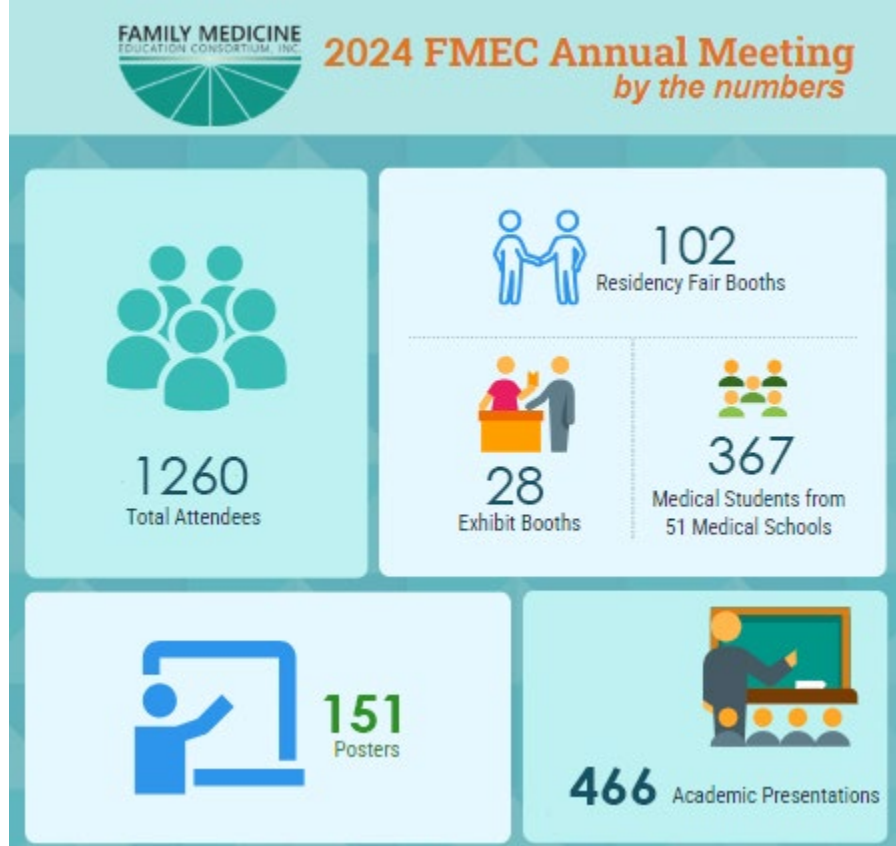
Shayla Rammel, Project Coordinator (since 2013)

- Exhibits, sponsorships, partnerships, residency fair, registration and social media

2024 Annual Meeting



Read the 2024 Annual Meeting Wrap Up Report at <https://www.fmec.net/post-2024-annual-meeting>



Where is the FMEC 2025 Annual Meeting?

FMEC 2025 Annual Meeting
September 18-20, 2025

Huntington Convention Center, Cleveland, OH

<https://www.fmec.net/news-releases>

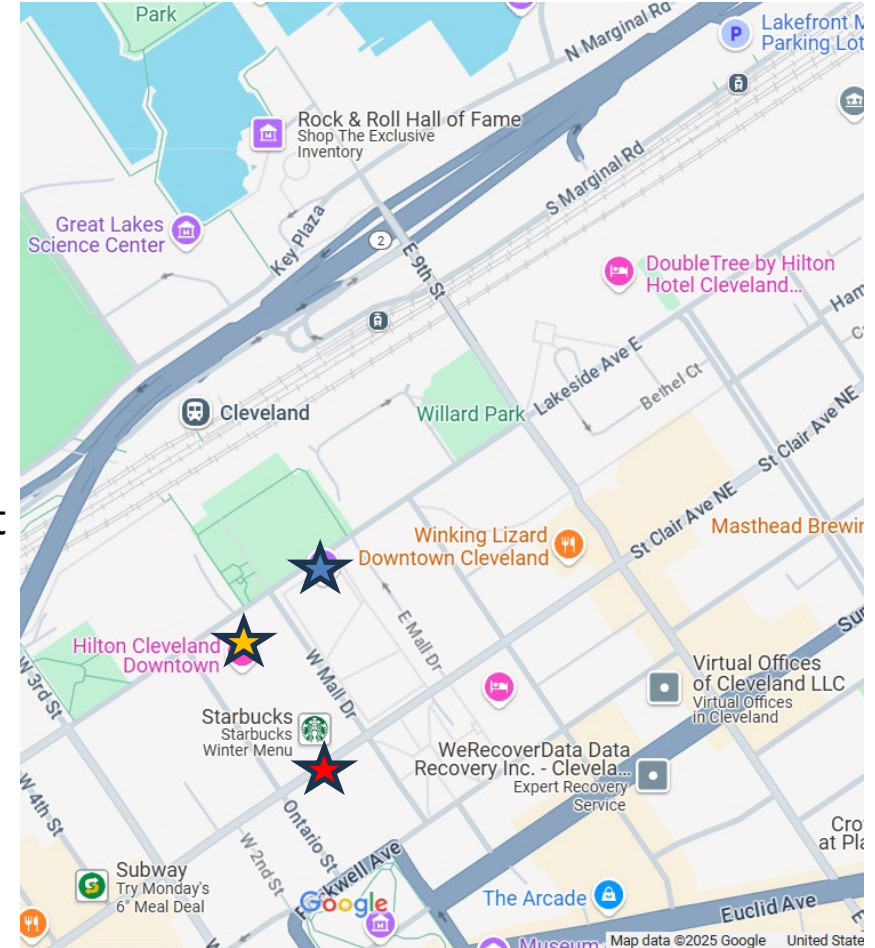


- ★ Huntington CC
- ★ Cleveland Hilton
- ★ Cleveland Marriott

Hotels:

[Hilton Cleveland Downtown](#), 100 Lakeside Ave E,
Cleveland, OH 44114

[Cleveland Marriott Downtown](#), 1360 W Mall Dr, Cleveland,
OH 44114



What We Will Cover Today

- Registration rates and deadlines
 - Residency Fair
 - Individual Registrations
 - Exhibits
- Information to prepare for registrations
- Group registering and invoicing
- Discounted rates
- Schedule and travel for the meeting
- Information for speakers
- Coordinator opportunities at the meeting

Residency Fair – Registration

See <https://www.fmec.net/residency-fair>

Residency Fair Booth Fees - *Required*

- Early Bird Rates: Partner: \$680 | Non-Partner \$980 – *through July 14*
- Regular Rates: July 15 to August 8: Partner: \$730 | Non-Partner \$1,030
- Deadline is August 8, 2025 – NO ONSITE REGISTRATIONS

Faculty Staffing Booth - *Required*

- Early Bird ends July 14: Member: \$555 | Non-Member: \$630
- Regular fee July 15 to September 9: Member: \$605 | Non-Member: \$680

Free Resident – *Optional* (value \$430-\$525)

Scholarship Contribution - *Optional*

Residency Fair – Schedule and Misc

See <https://www.fmec.net/residency-fair>

- Schedule
 - Friday morning/afternoon: set up (10am, end by 12:30pm)
 - Friday evening: 7pm-9pm
 - Saturday evening: 4:45pm-6:45pm
- Hand carry or ship materials
 - We recommend hand carrying materials or shipping to your hotel
 - Shipping options will be sent to all registered programs
- Modest giveaways are ok
- Tables organized by state, then alphabetically within state
- Door prizes for medical students, residents

Residency Fair – Things to Know

See <https://www.fmec.net/residency-fair>

- This is different from Exhibits!
- Use your FMEC account if you have one, if not create one
- Enter information as it will appear in print, website, app
- Be ready with answers to:
 - Does your program offer J-1 Visas?
 - Does your program interview/consider international students?
- *Must* input a faculty leader or member
 - This registers them for the meeting! They don't need to register again (unless they want to add preconferences)
- Don't know the resident attendee yet? Put "Unknown" and update Shayla later
- Can pay online with credit card or be invoiced
- New to a Residency Fair? We can help you prepare.

Speakers and Attendees – Registration

<https://www.fmec.net/2025-cleveland-oh>

Early Bird: through July 14

Professional Member: \$555 | Non-Member: \$630

Resident/Fellow: Member \$430 | Non-Member: \$475

Student: Member \$430 | Non-member \$475

Regular Registration: July 15-September 9

Professional Member: \$605 | Non-Member: \$680

Resident/Fellow: Member \$480 | Non-Member: \$525

Student: Member \$480 | Non-Member: \$525

On-site Meeting Registration: September 17-20

Professional Member: \$655 | Non-Member: \$730

Resident/Fellow: Member \$530 | Non-Member: \$575

Student: Member \$530 | Non-Member: \$575

Onsite registrations
must pay with a
check or credit
card. No invoicing.

Speakers and Attendees – Things to Know

<https://www.fmec.net/2025-cleveland-oh>

- If you are registering your faculty or residents:
 - Make sure they have not already registered themselves
 - Find out if they want to attend any preconferences
 - Please get their answers to these questions:
 - Race/ethnicity, biggest professional challenge, dietary preferences
- DO NOT USE YOUR EMAIL ON MULTIPLE REGISTRATIONS. We need to communicate directly to attendees. Emails become logins for the app, which every attendee needs.
- If you want to register a large group, we will send you a spreadsheet to complete and bill you
- Already registered but want to add preconferences?
 - Start registration process again but chose “Only need to register for a preconference”

Exhibits – Registration and Things to Know

See <https://www.fmec.net/exhibitors-sponsors>

Why exhibit?

- Recruiting/hiring opportunity for health system (over 600 residents and faculty)

Exhibit Booth Fees

- \$2,500, which includes up to 2 registrations for staff
- Complimentary for FMEC Gold (\$5,000) Partners and above

Schedule

- Does not conflict with Residency Fair
- Friday, Noon to 5:30pm and Saturday, 8am to 2:30pm

Partner Organizations

See <https://www.fmec.net/partner-benefits>

- Joining as a Partner gets you
 - Residency Fair and Showcase discount
 - Individual faculty and resident memberships, with discounts
 - Opportunities to circulate job openings
- Almost half of programs in FMEC region are Partners

Partner Levels
 Bronze \$1,000
 Silver \$2,500
 Gold \$5,000
 Platinum \$10,000
 President \$25,000

President \$25,000	Platinum \$10,000	Gold \$5,000	Silver \$2,500	Benefits
			•	1 entity (residency site or medical school) receives Bronze Level partner benefits
•	•	•	•	Individual FMEC memberships for ALL residents at all sites
•	•	•	•	Individual FMEC memberships for up to 10 faculty or staff
			•	Job and fellowship postings in FMEC's Special Edition email
•	•	•		3 entities (residency sites or medical schools) receive Bronze Level partner benefits
•	•	•		Individual FMEC memberships for ALL faculty and staff
•	•	•		Promote your institution and faculty in FMEC's In Focus newsletter
•	•	•		Free (\$2,500 value) exhibitor booth at the FMEC Annual Meeting
	•			5 entities (residency sites or medical schools) receive Bronze Level partner benefits
•	•			Invitations to FMEC leadership events at FMEC Annual Meetings
•	•			FMEC Annual Meeting recognition from podium
•				All entities (residency sites and medical schools) receive Bronze Level partner benefits
•				FMEC Annual Meeting recognition as plenary or preconference sponsor

Updated 3-8-2022

2025 FMEC Annual Meeting

Schedule at a Glance

Wednesday, September 17, 2025

4pm–7pm Registration, Early Arrivals Event(s)

Thursday, September 18, 2025

11am–7pm Registration

8am–12pm Business Meetings TBD

8am–5pm Preconferences TBD

5:30pm–7pm FMEC Presidents Welcome Reception

Friday, September 19, 2025

7am–8:30pm Registration

8am–12pm Exhibitor Set-up

8am–5pm Welcome Lounge (if sponsored)

9am–12:30pm Sessions (9–10, 10:15–11:15, 11:30–12:30)

10am–12:30pm Residency Fair Set-up

12pm–5:30pm Exhibitor Booth Hours (may start earlier)

Friday (continued)

12:30pm–2pm Opening Plenary and Awards (lunch)

2:30pm–5pm Sessions (2:30–3:30, 3:45–4:45)

4:45pm–5:30pm Evening Break (visit the exhibits)

5:30pm–7pm Evening Plenary and Awards (dinner)

7pm–9pm Residency Fair

Saturday, September 20, 2025

7am–4pm Registration

7am–8am Sessions including Breakfast Tables (7–8)

8am–2:30pm Exhibitor Booth Hours

8am–12pm Sessions (8–9, 9:15–10:15, 11–12)

12pm–2:30pm Learn at Lunch (Poster Sessions, Clinical Camps)

2:30pm–3:30pm Sessions (2:30–3:30)

3:45pm–4:45pm Closing Plenary and Awards

4:45pm–6:45pm Residency Fair

	Wed Sept 17	Thursday Sept 18	Friday Sept 19	Saturday Sept 20	
7am			Registration	Registration Breakfast Discussions	7am
8am		Business Meetings	Exhibit Set-up	Exhibits Open Academic Sessions (2 blocks)	8am
9am		Preconferences (see specific schedules)	Academic Sessions (3 blocks)	Academic Sessions	9am
10am					10am
11am					11am
12pm					12pm
1pm		Registration	Exhibits Open Plenary #1 Lunch	Learn at Lunch Posters Clinical Camps Exhibits	1pm
2pm		Early Arrivals Registration	Academic Sessions (2 blocks)	Academic Sessions	2pm
3pm					3pm
4pm				Plenary #3	4pm
5pm			Plenary #2 Dinner	Residency Fair	5pm
6pm		Reception (invite only)			6pm
7pm					7pm
8pm			Residency Fair	Closing Celebration	8pm
9pm					9pm

Education at the FMEC Annual Meeting

Educational Programming:

Preconferences = 3-4 hours

Workshops and Seminars = 1 hour

Research and QI = 30 mins (2 per 1-hour block)

Lecture Discussions = 20 mins (3 per 1-hour block)

Papers = 15 mins (4 per 1-hour block)

Clinical Success Stories, Power Stories,
Speed Presentations = 5-7 mins

*Tracks are subject to change
each year based on submissions*



TRACKS	
(ACGME)	Accreditation Council for Graduate Medical Education
(ADSU)	Addiction/Substance Use
(ADV)	Advocacy
(NM)	Art/Narrative Medicine
(CE)	Community Engagement or Involvement
(COVID)	Covid 19
(DEI)	Diversity, Equity and Inclusion
(DMCC)	Disease Management/Clinical Care
(F)	Faculty
(IH)	Integrative Med/Whole Person Health
(INN)	Innovation
(MCH)	Maternal and Child Health
(MH)	Mental Health
(NT)	Nutrition
(OSTEO)	Osteopathic
(POCUS)	Point of Care Ultrasound
(PRO)	Procedures
(PTSIP)	Preparing to Succeed in Practice
(RESQI)	Research/Quality Improvement
(R)	Resident
(REPRO)	Reproductive Health Care
(RESQI)	Research/Quality Improvement
(RM)	Rural Medicine
(S)	Student
(SDOH)	Social Determinants of Health
(WELL)	Wellness

Information for Speakers

- Acceptance and rejection emails will be sent starting in early May or sooner
 - Emails will go all persons listed as Authors on the proposal
- ALL SPEAKERS MUST REGISTER
- Specific schedule (day, time of sessions) available in June

Housing and Travel

FMEC only has two room blocks, at the Cleveland Hilton and Cleveland Marriott.

Hilton Cleveland Downtown Hotel:

(Connected to the Convention Center)

Reservations deadline: **August 25, 2025**

Reservation link

Hotel reservations line: 216-413-5000

Address: Hilton Cleveland Downtown

100 Lakeside Avenue East, Cleveland, OH 44114

Website: [Link](#) (please use this to check parking rates and options)

Rate (plus taxes): \$279

Marriott Cleveland Downtown at Key Tower Hotel:

(One block away from the Convention Center)

Reservations deadline: **August 25, 2025**

Reservation link

Hotel reservations line: 216-696-9200

Address: Marriott Cleveland Downtown at Key Tower
36 West Mall Drive, Cleveland, OH 44114

Website: [Link](#) (please use this to check parking rates and options)

Rate (plus taxes): \$259

Please use the FMEC blocks (above) to get the discounted rate. FMEC will post other travel tips (parking, transport from airport) on its website.

FMEC Annual Meeting: Key Dates

Educational Programming

February 3 – Call for Submissions Closed
May 5 – Submission Acceptance Emails Begin
May 15 – Call for Poster Submissions Opens
July 1 – Call for Poster Submissions Closes
Late July – Poster Acceptance Emails Sent
September 18-20 – FMEC Annual Meeting

Awards

March 28 – Awards Nomination/Submission Process Opened
April 18 – Awards Nomination/Submission Deadline
May 15 – Award Winner Notifications Begin
September 18-20 – FMEC Annual Meeting

Registration and Hotel

March 24 – Registration Opened for Residency Fair, Exhibitors
March 24 – Hotel Room Blocks Opened;
(Hilton Cleveland, Marriott Cleveland)
April 21 – Registration Opens for Individuals
April 21 – Student Scholarship Application Form Opens
August 25 – Hotel Room Blocks Deadline;
(no room/rate guarantee after this date)
July 14 – Registration Early Bird Deadline
August 8 - Last day for Residency Fair and Exhibitor Registration
August 8 - Last day to cancel with refund (minus \$50 fee)
September 9 – Online Registration Closes
September 17 – Onsite Registration Opens; *individuals only*
September 18-20 – FMEC Annual Meeting

Questions about the FMEC or the Meeting?





Program Coordinators are the heart and soul of a residency,
the first trusted place that many residents go to.

You are so much more than Coordinators.
You are the listening ears, the shoulders to cry on, encouragers,
firefighters, and keepers of the 'spirit' of your residency programs.